



THE IDAHO WORLD

“The Noblest Motive Is The Public Good”

Wednesday, December 14, 2023

Idaho's Oldest Newspaper
Established 1863

THE VOICE OF BOISE COUNTY

Boise County Commissioners Meeting, pg 2; Sheriff's Office, pg 5, Drama, pg 6; Lowman Extrication, pg 12

Placerville Gathers for Christmas Tree Lighting



PLACERVILLE – The Placerville community came together for warm drinks, delightfully decorated cookies, and companionship on Saturday to watch the lighting of their outdoor Christmas tree. Blanketed with snow, the multi colored lights shone brightly among the branches of the pine.

George Butters, Placerville's Fire Chief in the white cowboy hat, was pictured talking with Mayor Brian Davis.



Photos by Rick Barber

Heavy Snow and More Expected



Heavy snowstorms blew in last week and created difficult driving conditions. The Boise County Sheriff's Office had nine traffic accidents with damage and twelve slide-offs reported.

Another weather system is expected to bring a large amount of snow starting on Monday, December 19th.

Photo by Linda Ruppel, DDS



The Garden Valley Market hosted Santa Claus this past Friday and Saturday and he will be there again this coming Friday (11-1) and Saturday (10-2). I had a chance to visit during a short lull between the children who have been visiting, giving Santa a chance to grant my wish and let me take some pictures. The GV Market was very festively decorated for the occasion and a great central location. Photo by Linda Ruppel, DDS (AKA Garden Valley Paparazzi)

Get A Better Deal On A Subscription

Your Name Would Be Here & Delivered To Your
Address Every Week

Go to idahoworld.com to subscribe

BOISE COUNTY

BOISE COUNTY COMMISSIONERS

Transcribed by Eileen Capson

December 5, 2022

Present: Commissioners Steve Twilegar and Clay Tucker

Absent: Commissioner Ryan Stirn

Pledge of Allegiance

CONSTITUENT INPUT: None

MINUTES: Chairman Twilegar made a motion to approve the minutes from November 29, 2022.

PLANNING AND ZONING: Alex Gross presented an updated fee resolution for Planning and Zoning. This will include building permits, land use applications, etc. Gross said that houses, shops, and commercial items would have a fee increase. However, "smaller things, the goal, how I did this was to make them either cost the same or less than they do now. So, something like a shed would cost between \$50 and \$100 less to build with this new resolution than the current fee." The house permit costs would go up because P&Z will be required to do two inspections specifically for the state, "that we are not charging for, because our fee resolution only allows us to charge for four – not six inspections." Gross said he compared many other counties in the state, "and we're still on the very low end of our fees." He said costs for building evaluations had not been updated since 2016, but there are plans to update the table in his office.

AVIMOR: Prosecutor Adam Strong presented an updated road agreement with Avimor development. Some slight changes were discussed regarding the possible annexation of Avimor, and a highway district. Then Commissioner Twilegar motioned to approve the agreement between Avimor and Boise County for a road maintenance agreement with the discussed changes.

SHERIFF'S OFFICE: Chairman Twilegar motioned to approve the purchase order, using grant money, for communication devices on all the trucks in the amount of \$43,800. Twilegar then motioned to ap-

prove the purchase of breathalyzers, through the use of grant money, in the amount of \$13,245. The motions carried.

BOISE STREET BRIDGE: Chairman Twilegar motioned to approve the agreement between the LHTAC (Local Highway Technical Assistance Council) and Boise County concerning the Boise Street Bridge in Horseshoe Bend. The motion carried.

SNOW GROOMING: Chairman Twilegar made a motion to approve the road and bridge snow groomer program loader rental agreement for this snow season. The motion was approved.

CLEAR CREEK/ROBIE CREEK/WILDERNESS RANCH PROGRAM: Through the emergency manager, more grant money came available for the project to reduce hazardous fuels around homes in east Boise County. Commissioner Twilegar made a motion to approve a memorandum of understanding between the Idaho Department of Lands and Boise County to include Clear Creek, Robie Creek, and Wilderness Ranch as recipients of the hazardous fuels mitigation grant.

T-MOBILE: The Sheriff's Deputies have had issues

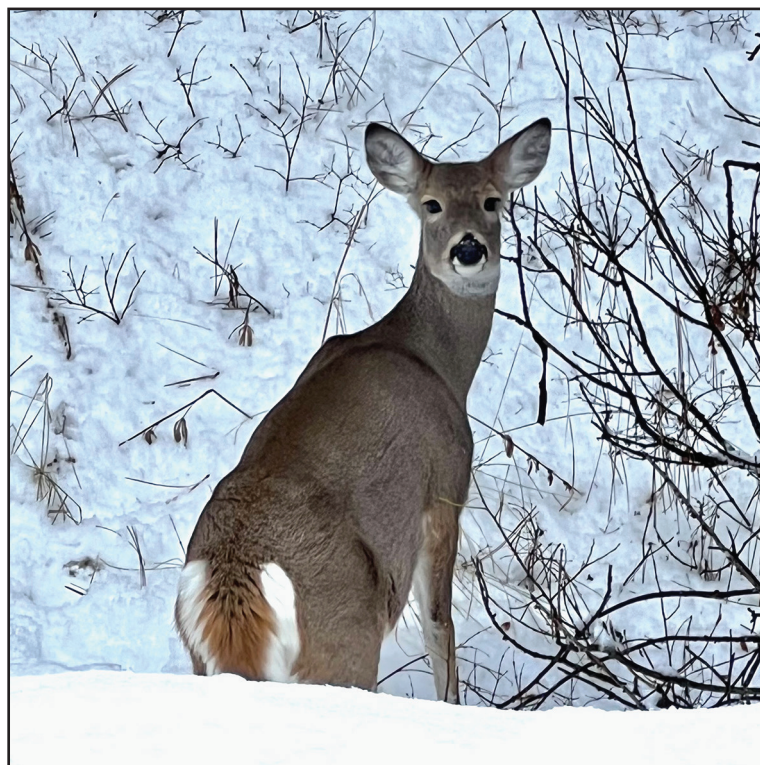
with T-Mobile and spotty service, and Sheriff Turner mentioned that Verizon was going to come that day with their equipment. Commissioner Twilegar motioned to pay for the cell phone charges in the amount of \$989.34.

BOARD OF EQUALIZATION: The commissioners convened as the Board of Equalization and heard from an employee from the Assessor's office, who was first sworn in to tell the truth and nothing but the truth. The employee said that those in his office made an assessment of a house and comparable homes in the area to get a square-foot value, for "a brand new home" in the Terrace Lakes area.

Assessor Chris Juszczak said, "We are well within our ten percent of law of being within market value."

Chairman Twilegar pointed out that it was a new home, "and as we know, Garden Valley is by far probably one of the most expensive places in the county. So, it doesn't look off to me at all." He then made a motion to deny the appellants' appeal and uphold the assessor's value. Commissioner Tucker seconded and the motion passed.

Adjourned at 11:48am.



White-tailed deer in Garden Valley. Photo by Linda Ruppel, DDS

December 24th
5:00 - 6:30 Pm
A FAMILY CHRISTMAS
Christmas Eve Service
At the
IDAHO CITY CHRISTIAN CENTER
No Service on Christmas Day



ANDERSON
 We got nuts!
HARDWARE & SUPPLY
208-392-2271 • Wednesday-Monday • 9:00AM to 5:00PM

New Construction, Remodels and Repairs
Licensed and Insured
208-899-9404
BERG PLUMBING LLC

THE IDAHO WORLD

"The Voice of Boise County"

Idaho's Oldest Newspaper
Established September 29, 1863

Published weekly by:
Idaho World Publishing, LLC
P.O. Box 220; Idaho City, ID 83631
Eileen Capson - *Editor-in-Chief*
editor@idahoworld.com
(208) 202-9288
Send articles & legals to:
editor@idahoworld.com

Correspondents:
Eileen Capson - Idaho City
editor@idahoworld.com, 208-202-9288
Tracy Koslosky - Horseshoe Bend
tracy@idahoworld.com, 208-793-2834
Jennifer Haney - Lowman/ Garden Valley
jennifer@idahoworld.com, 208-259-3817
Linda Ruppel, DDS - Garden Valley photographer
proschick@msn.com

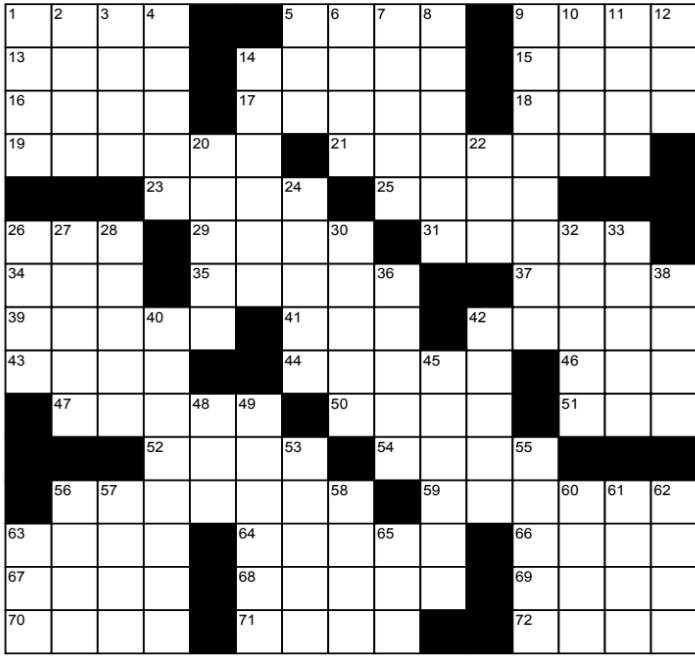
Contributors:
Marjolein Lolkema
Rick Murray
Georgene Thomas

Copy Editor: Twila Neiwert

The opinions expressed in paid advertisements and in articles do not necessarily represent the views of this newspaper or of its staff.

USPS (256-120) - PERIODICAL Postage paid at Idaho City, Idaho, and at additional mailing offices under the Act of March 3, 1879. Annual subscriptions are \$30 for delivery within Boise County, \$45 for delivery to addresses with zip codes starting with 836, 837 or 979, and \$50 to other U.S. addresses.
POSTMASTER: Send address changes to - The Idaho World;
PO Box 220; Idaho City, ID 83631

BOISE COUNTY



www.CrosswordWeaver.com

ACROSS

- 1 Prick
- 5 Stir
- 9 Syllables used in songs (2 wds.)
- 13 Volcanic rock
- 14 Japanese poem
- 15 After awhile
- 16 Center of rotation
- 17 Lil' ___ (cartoon character)
- 18 Wait
- 19 Capital of Guinea-Bissau
- 21 Beta-___, vitamin
- 23 Has
- 25 State
- 26 Advertisements
- 29 Parts of plays
- 31 Pine
- 34 Arc
- 35 Sounds alike
- 37 Want
- 39 Flaxen
- 41 Headed
- 42 Rot

- 43 Lotion ingredient
- 44 National bird
- 46 Snacked
- 47 Elite
- 50 Scold
- 51 Doctoral degree
- 52 Positive
- 54 Invitation abbreviaton
- 56 More salty
- 59 Trustworthy
- 63 Soft mineral
- 64 Minuscule remains
- 66 Realm
- 67 Handout
- 68 Incite (2 wds.)
- 69 Spring flower
- 70 Sonnet
- 71 Thought-provoking
- 72 Green seedless plant

DOWN

- 1 Block
- 2 Ride on the runway
- 3 Car rental agency
- 4 Operatic bass

- 5 Bill
- 6 Pit noise
- 7 Shoot clay pigeons
- 8 Horse drawn carriage
- 9 Ticket lane (2 wds.)
- 10 Negative (prefix)
- 11 Lend
- 12 Some
- 14 Hindquarter
- 20 Medal
- 22 Brew
- 24 What's in
- 26 Father
- 27 Girl's toys
- 28 Faint
- 30 Spread out
- 32 Summary
- 33 Under, poetically
- 36 Author Poe
- 38 Colored
- 40 Tumor
- 42 Dig
- 45 Concentrate
- 48 Deli order
- 49 Qualified
- 53 Woolen cloth
- 55 Sacred poem
- 56 Farm building
- 57 Apex
- 58 Fury
- 60 Triad
- 61 Snaky fish
- 62 24 hour periods
- 63 Chart
- 65 Police officer

Solution found on page 7.

Need a Christmas present? A comic book is now available on Amazon - "Chim Chum & the Portly Samurai, Year of the Fox" by Adrian Ropp!



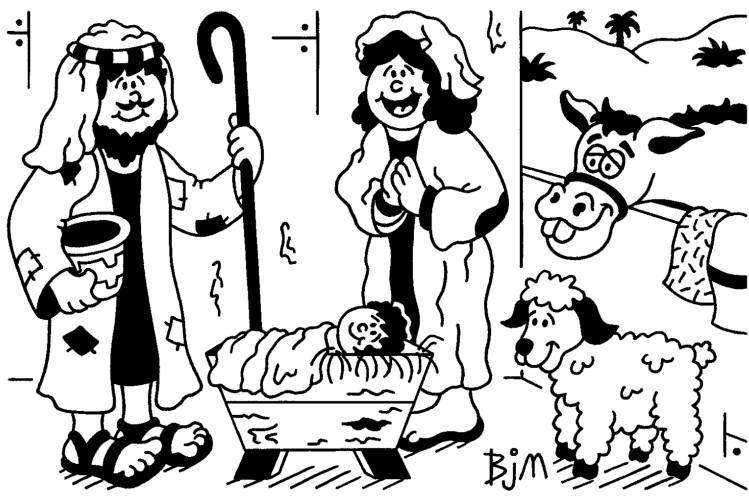
"Listen, Vic, we know you have sonar. You don't have to keep asking, 'Can I bounce something off of you?'"

Chim Chum & the Portly Samurai by Adrian Ropp



"SO YOU'RE TELLING ME YOU SPENT THE WHOLE DAY STANDING NEXT TO THIS BOULDER BECAUSE YOU THOUGHT IT WAS ME?"

ComParrot by Bonnie J. Malcolm
Can you spot 12 differences between these pictures?

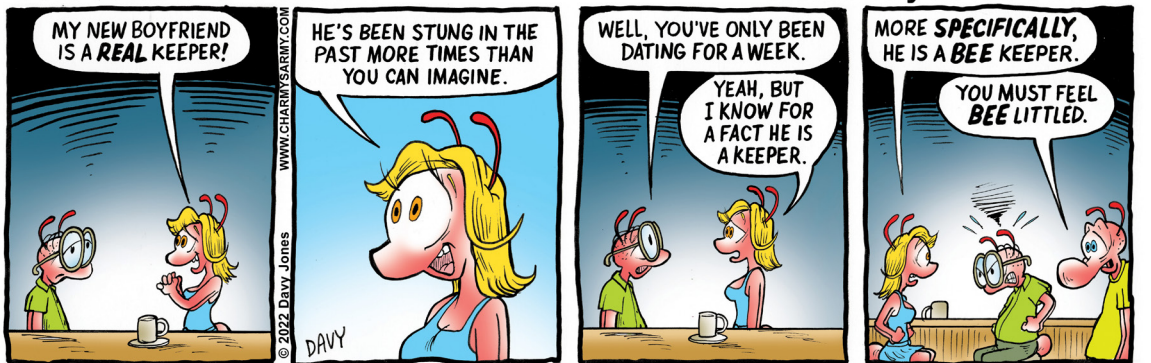


Solution on page 7.



CHARMY'S ARMY

Created by DAVY JONES



BEEZWAX

By John Martin



BOISE COUNTY

OBITUARIES



December
HSB senior center


Free Exercise Classes

2 11 AM tai chi	20 11 AM senior fit
6 11 AM chair yoga	23 No class
9 11 AM senior fit	27 11 AM senior fit
13 11 AM tai chi	30 No class
16 10:15 AM cardio dance	

Free Public Events

Musical Performance
JC Fry & Cora Larson
Dec. 16 @ 11 AM

Lunch Tues & Fri at 12:15
Seniors \$5, others \$6




Jane Meckelson
1935 - 2022

Jane Meckelson, 87, passed away peacefully at her new home in Island Park, Idaho on the evening of December 5, 2022. She was born on January 23, 1935 in Caldwell, Idaho.

She graduated from Boise High School in 1953 and married her high school sweetheart Jim Meckelson in 1955. They had 4 children. Jane started her career in the floral industry and later became a co-owner of Johnson Floral. She retired in 2000 and moved to Terrace Lakes where they lived out their retirement years in a community they grew to love and made many wonderful friends.

She is preceded in death

by her husband Jim, 2 sisters Kathryn Yost and Elizabeth Massey, and her grandson Joel Watson. She is survived by her children, Monty (Susan) Meckelson, Boise, Shannon (Dan) Maher, Spokane, Kelly (Scott) Watson, Pocatello, and Dawn Meckelson (Ed Chriss), Eugene, 10 grandchildren, 11 great grandchildren and her beloved dog Mister.

There will be a celebration of life ceremony in Crouch, Idaho in the spring of 2023. The date is yet to be determined and will be posted on the Baxter Funeral Home website <https://www.baxterfh.com> and on social media.



Lisa Marie Bowery
1962 - 2022

Lisa Marie Bowery passed away. She was sixty. She was born to John and Maureen Bowery on October 9, 1962. Lisa has one brother, Gary Bowery, and a sister, Ida Thomas. Lisa is survived by her son and daughter. Her son is Joseph Wiecz Oreo and her daughter is Sylvia Grob Pederson; her grandchildren by Sylvia are Addison, Damian and Gedion. She is preceded in death by her husband, Chris Patterson.

Lisa graduated Bellevue West High School Class of 1980.

She was a veteran of the United States Army.

Lisa was involved with the Idaho City Christian Cen-

ter and Latter-day Saints Idaho City Church.

Lisa was a kind, caring person, no matter what tribulation she was experiencing she stepped up and helped people. She helped so many people and animals over the years. Lisa loved her animals. Lisa also made jewelry and many other crafts; she was a very creative person.

Dear Lisa, you never knew how much God and all of us love you. You are at peace now and I'm very grateful for that, you deserve peace and healing. Be blessed, we are all missing you so much.

Boise County Sheriff and Idaho City Chamber Presents

Christmas Giving Tree

November 28 - December 20

3851 ID-21
Idaho City

Help someone who needs it this Christmas and pick a wish from the tree.

Questions: Kassidi Brown
208-506-9056



Idaho City Community Club Annual Residential Christmas Lighting Judging

As you decorate and light your homes this season, remember to leave the lights on for the judges of the Idaho City Community Club to see your display between the 14th and 23rd of December. The judges will be driving around Idaho City and surrounding areas, (down Hwy 21 to Jackson's corner, up Hwy 21 to Idaho City Estates and points between). They will select the 1st, 2nd and 3rd place winners of the 2022 Lighting Contest.

Idaho City Community Club has been judging residential Christmas lights for over 50 years! Please join the fun.

HOME BOUTIQUE
"Everything you don't need!"

Unique Gifts, Decor & Home Goods

Rachel O'Brien | 208-392-5223



HOME BOUTIQUE

307 Main Street

Located on the Boardwalk next to the historic Boise Basin Merc
307 Main Street

Open weekdays and weekends for all of your Christmas gift shopping!



Thanks for Choosing Us as Your Chimney Service Provider

SAFER CHIMNEY, LLC

Quality • Service • Experience

SAFERCHIMNEY.com
208-695-7542
idahochimney@gmail.com



- Chimney Relines
- Rebuilds/Repairs
- Caps/Dampers
- Dryer Vents Cleaned
- Smoke Problems Solved
- Custom Outdoor Firepits

25+ Years Serving IDAHO



CHIMNEY CLEANING & REPAIR • CUSTOM BUILD & RESTORATION

BOISE COUNTY

Boise County Sheriff's Office



Curious white-tailed deer in Garden Valley.

Photo by Linda Ruppel, DDS



By Sheriff Scott Turner
BOISE COUNTY -- This holiday season the Boise County Sheriff's Office urges drivers to celebrate responsibly and plan ahead for a sober ride. From now through the New Year, the Boise County Sheriff's Office is joining more

than 55 agencies across Idaho to dedicate additional law enforcement efforts to keep impaired drivers off the road.

According to Idaho Office of Highway Safety data, 40% of all fatalities in 2021 were the result of an impaired driving crash in Idaho.

One life lost is too many. As 2022 ends, please celebrate the holidays wisely. Make safe decisions behind the wheel to avoid devastating consequences. Always buckle up and if your festivities will include alcohol, please make a plan for a sober ride home.

While law enforcement will be on heightened watch for drivers under the influence of drugs and/or alcohol, preventing crashes is a shared responsibility in our community.

Impaired driving puts Idahoans at risk every day and it's completely preventable. We can all choose to avoid dangerous driving behaviors and help ensure a safer holiday for our friends, family, and neighbors.

What can you do to help?

Celebrate with a plan.

A single DUI conviction for a first-time offender in Idaho can include costly fines, court costs, legal fees, jail time, and license suspension. Your judgement clouds when under the influence, so it's important to plan a safe ride home before you leave the house.

-Designate a sober driver or plan to use a ride service to get home safely.

-Is it your turn to be the designated driver? Take that role seriously and do not drink any alcohol. Your friends and family are counting on you.

-If someone you know is about to drink and drive, take the keys away and help arrange a safe ride.

-Always buckle up – it's your best defense against impaired drivers.

Funding for extra patrols and overtime work focused on impaired driving enforcement is provided by a grant through the Idaho Office of Highway Safety and the National Highway Traffic Safety Administration.



An elk munching grasses in the Garden Valley snow.

Photo by Marjolein Lolkema

Boise County Sheriff's Office

Nature of Call	Total Calls
911 Hangup	1
Abandoned Vehicle	1
Traffic Accident with Damage	9
Traffic Accident with Injuries	2
Animal at Large	1
Citizen Complaint	2
Civil Complaint	1
Domestic Disturbance	1
Health & Welfare	4
Harassment	1
Information Report	3
Medical Emergency	11
Assist Motorist	8
Mental Hold	1
Overdue Person	1
Parking Problem	11
Public Asst	4
Public Contact	3
Reckless Driver	2
Road Block	1
Slide Off	12
Shots Fired	1
Suicidal Subject	1
Suspicious Person/Circum.	1
Theft	1
Vehicle Theft	1
Traffic Violation	1
Traffic Stop	45
Vin Serial # Inspection	2
Warrant Arrest	1

Totals for 11/29/22-12/05/22 134

Say Yes to a New Adventure!



www.gardenvalleyproperties.com

539 S Middlefork Rd
 Garden Valley, Idaho 83622
 208-462-4620



BOISE COUNTY

Garden Valley's Drama Team



GARDEN VALLEY -- The District/State Drama Showcase was a wonderful display of talent. The Garden Valley High School students sang, acted, pantomimed, and did monologues for the public on Wednesday, December 7th. Student selections included excerpts from *Newsies*, *The Mad Ones*, *Les Misérables*, and others.

Photos by Linda Ruppel, DDS



Boise Basin Senior Center will be hosting a **Holiday Lunch** on December 22, 2022. There will be caroling, gifts, and a raffle.
Soup is on at 11:00 am
Salad at 11:30am
Ham Dinner at 12:00 pm



Solstice, December 21, 2022

Join us for a stroll along a candle lit path on the longest day of the year.

Warm up and visit at several fire pits.

Idaho City Airport – DARK!



Idaho City Arts Council

SEVERANCE SAND & GRAVEL

Garden Valley • Lowman

Readymix Concrete • Concrete • Sand • Topsoil • Gravel

Delivery or U-haul

We accept Visa & MC
License # RCE34099



Call 208-462-3005

Stay Wild. Stay Connected.

Wireless Internet from a local Idaho Company

**Wilderness
Wireless**

Powered by **ctc**

208-685-2723 | WILDWISP.COM

BOISE COUNTY

Horseshoe Bend Teacher of the Year

By Tracy Koslosky
HORSESHOE BEND --

Kelsey Williams, Special Education Director and teacher for the Horseshoe Bend School District, was named the Boise County Teacher of the Year, marking the second year that the district has taken the coveted prize presented by the Veterans of Foreign Wars Post 142.

Williams was surprised when the award was given to her on campus Tuesday, December 7th. Williams received a certificate of recognition plus a monetary award from the post.

Pictured from left to right: VFW Post #142 representative Steve McCabe, Boise County Teacher of the Year Kelsey Williams and VFW Post #142 representative Don Mitchell.



Photo by Tracy Koslosky

Horseshoe Bend All-State Volleyball

By Tracy Koslosky
HORSESHOE BEND --

The Idaho All-State Volleyball team players have been announced and Horseshoe Bend had big wins in the 1A DII division. Player of the Year is Annelie Wilson (center), a junior at Horseshoe Bend High School. Players named to the 1A DII First team are juniors Olivia Bauer (right of center), Abby Howerton (3rd from right) and freshman Aliyah Meyer (left of center). Junior Torey Tschida (2nd from left) made the 1A DII Second Team. The Horseshoe Bend Mustang coach, Sharsti Moore (not pictured) was selected as the Coach of the Year.



Image courtesy of Horseshoe Bend Mustangs Volleyball

Sunday Morning Services at 10 AM
109 S. Riverside Drive,
Horseshoe Bend, ID 83629
(208) 793-2448

WATCH US LIVE ON FACEBOOK OR FIND US AT:
www.hsbvalleychristian.com
HSB Valley Christian Center on Facebook

~ SOLUTIONS FROM PAGE 3 ~

Solution: 1. Bush behind stable is missing. 2. Donkey's teeth are hidden. 3. Strap appears on sandal. 4. Shepherd's moustache is missing. 5. Patch on robe sleeve is colored in. 6. Patch on robe has moved. 7. Knothole in manger has moved. 8. Board on stable wall has moved. 9. Lamb's tail is larger. 10. Stripe on blanket is larger. 11. Headdress is longer. 12. Neckline on robe is lower.

Solution:

S	T	A	B		T	O	S	S		F	A	L	A		
L	A	V	A		H	A	I	K	U		A	N	O	N	
A	X	I	S		A	B	N	E	R		S	T	A	Y	
B	I	S	S	A	U		K	E	R	A	T	I	N		
				O	W	N	S		T	E	L	L			
A	D	S		A	C	T	S		Y	E	A	R	N		
B	O	W		R	H	Y	M	E			N	E	E	D	
B	L	O	N	D		L	E	D		D	E	C	A	Y	
A	L	O	E		E	A	G	L	E		A	T	E		
		S	N	O	B	S		R	A	I	L		P	H	D
				P	L	U	S		R	S	V	P			
		S	A	L	T	I	E	R		T	E	S	T	E	D
M	I	C	A		T	R	A	C	E		A	R	E	A	
A	L	M	S		E	G	G	O	N		L	I	L	Y	
P	O	E	M		D	E	E	P			M	O	S	S	

GOR
CONSTRUCTION - MAINTENANCE - HOME REPAIR
208-462-2882
REMODEL & RESTORATION SPECIALIST
FIRE - FLOOD - WIND - MOLD

Sourdough Lodge
Restaurant,
Motel, Cabin,
Gasoline,
RV Park, Liquor Store

Hours:
Open 7 Days A Week

Call 208-259-3326
MP 84, Hwy. 21, Lowman

Garbage Service to most of Boise County. We also have Construction & Demo Containers. Call for pricing. Locally Owned for 40 Years!
208-793-2561

LEGAL NOTICES



BOISE COUNTY BOARD OF COMMISSIONERS CONDENSED MINUTES
 TUESDAY, NOVEMBER 29th, 2022-Miners Exchange Building, Idaho City, Idaho, 83631
 Chairman Twilegar called the meeting to order and the pledge of allegiance was recited. Present: Chairman Twilegar,

Commissioner Tucker, Clerk Prisco, Deputy Clerk Coffelt, Prosecutor Strong, Assessor Juszcak, Sheriff Turner, Solid Waste/Noxious Weeds Superintendent Rekow, Road & Bridge Superintendent Dill, Community Justice Administrator Leader, Wildland Fire Mitigation For-ester/Emergency Manager Richardson. Via teleconference: Commissioner Stirm. Minutes for November 22nd, 2022 were approved. A Juvenile Justice annual financial report was approved. The findings of fact, conclusions of law and order for the appeal to Castle

Mountain Homes conditional use permit were approved. The purchase of a vehicle for the Road & Bridge department was approved. The purchase request for replacement body armor for the Sheriffs' Office was approved. One demand warrant was approved to pay for a vehicle for the Road & Bridge department. Future agendas were discussed. Adjourned. Approval, Chairman Twilegar. Attest, Clerk Prisco, Clerk to the Board.

Published in the Idaho World on December 14, 2022.

LEGAL NOTICE FOR BOISE COUNTY ELECTION CALENDAR FOR 2023

NOTICE IS HEREBY GIVEN that the following Districts will be conducting elections in Boise County during calendar year 2023:

NAME AND ADDRESS OF TAXING DISTRICT	ELECTION DATE	DECLARATION OF CANDIDACY FILING DEADLINE
Garden Valley School District #71 1053 Banks/Lowman Road Garden Valley	March 14, 2023 May 16, 2023 August 29, 2023 November 7, 2023	Last day to supply wording to the County Clerk for Bond/Levy is Jan. 23/March 27/July 10/Sept. 18, 2023 <u>Declarations due Sept. 8, 2023.</u>
Trustee Seats		
Basin School District #72 100 Centerville Road Idaho City	March 14, 2023 May 16, 2023 August 29, 2023 November 7, 2023	Last day to supply wording to the County Clerk for Bond/Levy is Jan. 23/March 27/July 10/Sept. 18, 2023 <u>Declarations due Sept. 8, 2023.</u>
Trustee Seats		
HSB School District # 73 398 School Drive Horseshoe Bend	March 14, 2023 May 16, 2023 August 29, 2023 November 7, 2023	Last day to supply wording to the County Clerk for Bond/Levy is Jan. 23/March 27/July 10/Sept. 18, 2023 <u>Declarations due Sept. 8, 2023.</u>
Trustee Seats		
Emmett School District #221 501 E. Main St. Emmett	March 14, 2023 May 16, 2023 August 29, 2023 November 7, 2023	Last day to supply wording to the County Clerk for Bond/Levy is Jan. 23/March 27/July 10/Sept. 18, 2023 <u>Declarations due Sept. 8, 2023.</u>
Trustee Seats		
Garden Valley Hospital District 980 Banks/Lowman Rd.; Garden Valley	May 16, 2023	Declarations due March 17, 2023
Horseshoe Bend Hospital District 102 Quinn St.; Horseshoe Bend	May 16, 2023	Declarations due March 17, 2023
Horseshoe Bend Library District 392 Highway 55; Horseshoe Bend	May 16, 2023	Declarations due March 17, 2023
Boise Basin Library District 123 Montgomery St.; Idaho City	May 16, 2023	Declarations due March 17, 2023
Garden Valley Library District 85 Old Crouch Rd.; Garden Valley	May 16, 2023	Declarations due March 17, 2023
Two Forks Recreational Water & Sewer Dist. 1075 Banks/Lowman Rd.; Garden Valley	May 16, 2023	Declarations due March 17, 2023
Pioneer Cemetery District P.O. Box 584; Horseshoe Bend	November 7, 2023	Declarations due September 8, 2023
Eagle Fire Protection District 1 Paloma Drive; Boise	November 7, 2023	Declarations due September 8, 2023
Garden Valley Fire Protection District 373 S. Middlefork Rd.; Garden Valley	November 7, 2023	Declarations due September 8, 2023
Horseshoe Bend Fire Protection District Gardena Fire Shed; Horseshoe Bend	November 7, 2023	Declarations due September 8, 2023
Placerville Fire Protection District 115 Ranft; Placerville	November 7, 2023	Declarations due September 8, 2023
Wilderness Ranch Fire Protection District 7 Wilderness Way; Boise	November 7, 2023	Declarations due September 8, 2023
City of Crouch 342 Village Circle; Garden Valley	November 7, 2023	Declarations due September 8, 2023
City of Horseshoe Bend 112 Ada St.; Horseshoe Bend	November 7, 2023	Declarations due September 8, 2023
City of Idaho City 511 Main St.; Idaho City	November 7, 2023	Declarations due September 8, 2023
City of Placerville 110 E. Granite St.; Placerville	November 7, 2023	Declarations due September 8, 2023
Garden Valley Recreation District P.O. Box 433; Garden Valley	November 7, 2023	Declarations due September 8, 2023

Declarations of candidacy are available at the respective taxing district offices or at the County Clerk's Office.

Signed: Mary T. Prisco
 Mary T. Prisco, Clerk of Boise County

Published in the Idaho World on December 14, 2022.

I am new to Garden Valley and live with my grandparents in the Mountain Shadow Subdivision. I enjoy technology and enjoy being of service to others. I am starting up my business, "Synergy Tech, LLC." and would like to help you with your technology needs. Please contact me so we can talk about your needs.

Things I may be able to help you with:

- Software
- Smart Lights
- Smart Phones
- Game Cameras and more!



References:
 Linda Ruppel
 Ellen Bush
 Marion Summers

Tavon Hansen
 hanstavo1@gmail.com
 208-419-1178 (Text or phone)

A FULL-SERVICE LAW FIRM
 Wills, Probate, Guardianships, Business, Real Estate

Davis & Walker
 Frank Walker
 11 Market Street, Garden Valley, ID 83622
 (208) 462-6388
 frankwalker@boiselaw.net

~Your Local Agent~

Terry Peterson
 Integrity ~ Experience ~ Commitment
 208.608.4329 | terryp059@gmail.com

Silvercreek REALTY GROUP

+ *I came up out of the water,
 raised my hands up to the Father
 Gave it all to him that day,
 Could finally see where I was going
 "Changed"* - Rascal Flatts

**We're talking about a new life at the Merc this Sunday
 Mountain Life Ministries Idaho City 10:00**

Local Independent Insurance Agent for Idaho City
A one-stop-shop for your medicare options

"I am a Local independent insurance agent that can represent many insurance companies."

- New to Medicare and feeling overwhelmed?
- Not sure which plan is right for you?
- Do you even need Medicare or can you keep what you have now?

We can answer these questions and many more **at no cost to you.** Call today for your free consultation and sleep better tonight.

Two locations Boise and Idaho City

Call for a **FREE CONSULTATION** to see which plan is *right for you!*

208-350-9933



CarrieAnne Kowalczyk
 carrieanne@ptibidaho.com



Personal Touch Insurance & Benefits



GARDEN VALLEY
 DENTAL

NOW ACCEPTING NEW PATIENTS

982 BANKS LOWMAN ROAD
 GARDEN VALLEY, ID 83622
 (208) 462-2220

SERVING THE COMMUNITY FOR OVER 25 YEARS

LEGAL NOTICES

SUMMONS FOR PUBLICATION
Case No.: CV08-22-00091

IN THE DISTRICT COURT OF THE FOURTH JUDICIAL DISTRICT OF THE STATE OF IDAHO, IN AND FOR THE COUNTY OF BOISE

THE BANK OF NEW YORK MELLON FKA THE BANK OF NEW YORK, AS TRUSTEE FOR THE CERTIFICATEHOLDERS OF CWALT, INC., ALTERNATIVE LOAN TRUST 2005-82, MORTGAGE PASS-THROUGH CERTIFICATES, SERIES 2005-82,

Plaintiff,

vs.

DARREN G. DEWEY (DECEASED) AND THE UNKNOWN HEIRS, ASSIGNS AND DEVEISES OF DARREN G. DEWEY; KIM DEWEY; DOES I THROUGH XX, inclusive, AS INDIVIDUAL WITH AN INTEREST IN THE PROPERTY, Defendants.

TO: DARREN G. DEWEY (DECEASED) AND THE UNKNOWN HEIRS, ASSIGNS AND DEVEISES OF DARREN G. DEWEY; DOES I THROUGH XX, inclusive, AS INDIVIDUAL WITH AN INTEREST IN THE PROPERTY:

NOTICE: YOU HAVE BEEN SUED BY THE BANK OF NEW YORK MELLON FKA THE BANK OF NEW YORK, AS TRUSTEE FOR THE CERTIFICATEHOLDERS OF CWALT, INC., ALTERNATIVE LOAN TRUST 2005-82, MORTGAGE PASS-THROUGH CERTIFICATES, SERIES 2005-82, the Plaintiff in the District Court in and for Boise County, Idaho, Case No. CV08-22-00091.

The nature of the claim against you is for, among other things, the judicial foreclosure of the real property located at 13 HARRIS CREEK ROAD, HORSESHOE BEND, ID 83629.

Any time after 21 days following the last publication of this summons, the court may enter a judgment against you without further notice, unless prior to that time you have filed a written response in the proper form, including the Case No., and paid any required filing fee to the Clerk of the Court at 420 Main Street, Idaho City, Idaho 83631, (208) 392-4431, and served a copy of your response on the Plaintiff's attorney at 702 W. Idaho St., Suite 1100, Boise, ID 83702, (208) 863-4401.

A copy of the Summons and Complaint can be obtained by contacting either the Clerk of the Court or the attorney for Plaintiff. If you wish legal assistance, you should immediately retain an attorney to advise you in this matter.

Dated this 11/25/2022

Clerk of the District Court
By: Angel O'Brien
Deputy

David M. Swartley, ISB No. 5230
McCarthy & Holthus, LLP
702 W. Idaho St., Suite 1100
Boise, ID 83702
Telephone: (208) 863-4401
dswartley@mccarthyyholthus.com

Published in the Idaho World 11/30, 12/7, 12/14 and 12/21/2022.

NOTICE OF HEARING ON NAME CHANGE (Minor)
Case No. CV08-22-00205

IN RE: Abigail Jane Kienlen
Legal name of child

A Petition to change the name of Abigail Jane Kienlen, a minor, now residing in the City of Boise, State of Idaho,

has been filed in the District Court in Boise County, Idaho. The name will change to Tegan Oliver Kienlen. The reason for the change in name is: Personal preference.

A hearing on the petition is scheduled for 11 o'clock a.m. on 01/04/2023 at the Boise County Courthouse. Objections may be filed by any person who can show the court a good reason against the name change.

Date: 11/17/2022

CLERK OF THE DISTRICT COURT
By: Stacy Lawrence
Deputy Clerk

Published in the Idaho World on 11/30, 12/7, 12/14 and 12/21/2022.

PUBLICATION SUMMONS
Case No. CV08-22-00169

IN THE DISTRICT COURT OF THE FOURTH JUDICIAL DISTRICT OF THE STATE OF IDAHO, IN AND FOR THE COUNTY OF BOISE
HOLLY BEVAN DELAY,
Plaintiff,
vs.

RIK W. FRASER and MARGO J. FRASER, Trustees of the RIK W. FRASER FAMILY TRUST, dated May 8, 2006, JANE STONE, an individual, UNKNOWN DOES 1-5, PAUL SHEPHERD and CAROL SHEPHERD, Defendants.

TO: RIK W. FRASER and MARGO J. FRASER, Trustees of the RIK W. FRASER FAMILY TRUST;

NOTICE: YOU HAVE BEEN SUED BY THE ABOVE-NAMED PLAINTIFF IN THE DISTRICT COURT OF THE FOURTH JUDICIAL DISTRICT OF THE STATE OF IDAHO, IN AND FOR THE COUNTY OF BOISE. THE COURT MAY ENTER JUDGMENT AGAINST YOU WITHOUT FURTHER NOTICE UNLESS YOU RESPOND WITHIN 21 DAYS. READ THE INFORMATION BELOW.

The nature of the action against you is to quite title in a roadway easement that crosses real property located in Boise County, Idaho and legally described in the attached Exhibit A, and to permanently enjoin any future obstruction of Plaintiff's access to the roadway easement.

YOU ARE HEREBY NOTIFIED that any time after 21 days following the last publication of this summons the court may enter judgment against you without further notice, unless prior to that time you have filed a written response in the proper form, including the Case Number, and paid any required filing fee to the Clerk of the Court at 420 Main Street, P.O. Box 1300, Idaho City, Idaho 83631, (208) 392-4431, and served a copy of your response on the Plaintiff's counsel, Wyatt B. Johnson, JOHNSON MAY, 199 N. Capitol Blvd, Ste 200, Boise, Idaho 83702, (208) 384-8588. A copy of the Summons and Complaint can be obtained by contacting either the Clerk of the Court or the attorney for the Plaintiff. If you wish to seek the advice of or representation by an attorney on this matter, you should do so promptly so that your written response, if any, may be filed in time and other legal rights protected.

DATED: 12/5/2022 11:02 AM
CLERK

By: Angel O'Brien
Deputy Clerk

Attorneys for Plaintiff Holly Bevan Delay
Wyatt B. Johnson, ISB: 5858

JOHNSON MAY
199 N. Capitol Blvd., Ste. 200
Boise, Idaho 83702
Phone: (208) 384-8588
Fax: (208) 629-2157
wbj@johnsonmaylaw.com

LEGAL DESCRIPTION

Parcel 1:
A parcel of land being a portion of the NE 1/4 of the SW 1/4 of Section 10, Township 9 North, Range 4 East, B.M., Boise County, Idaho and being more particularly described as follows:

Commencing at the West 1/4 of said Section 10, Thence South 89°40'42" East 1324.43 feet to an iron pin marking the CW 1/16 corner of said Section 10 (northwest corner of said NE 1/4 of the SW 1/4), Thence South 01°01'08" West 847.58 along the westerly boundary line of said NE 1/4 of the SW 1/4 to an iron pin marking the POINT OF BEGINNING:
Thence South 89°32'01" East 1241.46 feet to an iron pin;
Thence South 00°53'29" West 430.23 feet to an iron pin;
Thence North 89°40'57" West 1242.45 feet along said southerly boundary line of NE 1/4 of the SW 1/4 to an iron pin marking the southwest corner of said NE 1/4 of the SW 1/4 (SW 1/16 corner of said Section 10);
Thence North 01°01'08" East 433.47 feet along said westerly boundary line of NE 1/4 of the SW 1/4 to the POINT OF BEGINNING.

Parcel 2
A parcel of land being a portion the NE 1/4 of the SW 1/4 of Section 10, Township 9 North, Range 4 East, B.M., Boise County, Idaho and being more particularly described as follow:

Commencing at the West 1/4 corner of said Section 10, Thence South 89°40'42" East 1324.43 feet to an iron pin marking the CW 1/16 corner of said Section 10 (northwest corner of said NE 1/4 of the SW 1/4), Thence South 01°01'08" West 847.58 feet along the westerly boundary line of said NE 1/4 of the SW 1/4, to iron pin marking the POINT OF BEGINNING:
Thence South 89°32'01" East 1241.46 feet to an iron pin;
Thence South 00°53'29" West 430.23 feet to an iron pin on the southerly boundary line of said NE 1/4 of the SW 1/4;
Thence North 89°40'57" West 1242.45 feet along said southerly boundary line of the NE 1/4 (SW 1/16 corner of said Section 10);
Thence North 01°01'08" East 433.47 feet along said westerly boundary line of said NE 1/4 of the SW 1/4 to the POINT OF BEGINNING. ,

Published in the Idaho World on 12/7, 12/14, 12/21 and 12/28/2022.

The following application(s) have been filed to appropriate the public waters of the State of Idaho:

65-24192
SUMMER KISNER
DUSTIN KISNER
50 WEBSTER LN
HORSESHOE BND, ID 83629-5112
Point of Diversion NENW S9 T06N R02E BOISE County
Point of Diversion NENW S9 T06N R02E BOISE County
Source UNNAMED STREAM Tributary ROBBS CREEK
Use: STOCKWATER STORAGE
01/01 to 12/31
4.2 AF
Use: WILDLIFE STORAGE
01/01 to 12/31

4.2 AF
Total Diversion:
4.2 AF
Date Filed: 11-09-2022
Place Of Use: STOCKWATER STORAGE, WILDLIFE STORAGE
T06N R02E S9 NENW
Permits will be subject to all prior water rights. For additional information concerning the property location, contact the State office at (208) 287-4800; or for a full description of the right(s), please see <https://idwr.idaho.gov/apps/ExtSearch/WRApplcationResults/>. Protests may be submitted based on the criteria of Idaho Code § 42-203A. Any protest against the approval of this application must be filed with the Director, Dept. of Water Resources, State Office, 322 E Front St, PO Box 83720, Boise, ID 83720 together with a protest fee of \$25.00 for each application on or before **12/27/2022**. The protestant must also send a copy of the protest to the applicant.
GARY SPACKMAN, Director

Published in the Idaho World on 12/7/2022 and 12/14/2022.

PROOF OF PUBLICATION

CASE NO: CV08-22-00188

NOTIFICATION OF CHILD PROTECTION ACT PROCEEDINGS IN THE DISTRICT COURT OF THE FOURTH JUDICIAL DISTRICT IN THE STATE OF IDAHO, IN AND FOR THE COUNTY OF BOISE

In the Interest of C.C. PRECECHTEL-COOLEY: A Child Under Eighteen Years of Age. TO: ADAM COOLEY, the presumed natural FATHER and ASHLEY D. PRECECHTEL, the natural MOTHER of the child: YOU AND EACH OF YOU, will hereby take notice: That a Petition under the Child Protective Act was filed in the above-entitled matter on the 25th day of October, 2022. That a Case Plan hearing on the Petition has been set for 2:00 p.m. on the 20th day of December, 2022, in the Magistrate Court, Boise County Courthouse, 419 Main Street, Idaho City, Idaho 83631. The hearing may be attended virtually by video conference. That you have the right to be represented by Counsel of your choosing or upon good cause shown, providing you are financially needy, the Court may appoint Counsel to act on your behalf. That you are required to register your claim of paternity with the Vital Statistics Unit of the Department of Health and Welfare prior to the date of any termination proceeding, or proceeding wherein the child is placed with an agency licensed to provide adoption services, pursuant to Idaho Code 16-1513(5). DATED this 29th day of November, 2022.
Adam M. Strong
Prosecuting Attorney
Boise County, Idaho

Published in the Idaho World on 12/7 and 12/14/2022.

GARDNER CONSTRUCTION
208-392-4576
Road Construction,
Gravel, Roadmix, Sewer
Installation, House
Pads, etc.



CITY OF PLACERVILLE, IDAHO: TREASURER'S QUARTERLY & EOY REPORT				
4th Q Report	7/01/2022-9/30/2022			
FY 2022	10/01/2021-9/30/2022			
	4th Q	%	YTD	%
GENERAL FUND				
Receipts	\$14,532	21.36%	\$47,380	69.64%
Expenditures				
Administration	\$3,947	39.28%	\$7,896	78.57%
Building Maintenance	\$1,707	34.14%	\$1,798	35.96%
Fireworks	\$0	0.00%	\$3,475	115.83%
Cemetery	\$5,565	92.75%	\$5,565	92.75%
Equipment	\$0	0.00%	\$0	0.00%
Labor	\$2,268	24.92%	\$5,761	63.30%
Roads	\$962	3.22%	\$5,775	19.32%
TOTAL EXPENDITURES	\$14,448	21.24%	\$30,270	44.49%

Citizens are invited to inspect the detailed supporting records of the above financial statements.
Julie Randolph, City Clerk/Treasurer
Date 12/8/22 Published in the Idaho World on 12/14/2022

Mountain Properties For Sale

Lots from 1 - 40 Acres in Boise County
Terms - 10% down and 1% per month.

We also have property in Adams Co. in larger parcels on the Middle Fork of Weiser about 20 miles from Tamarack Resort.

For current list call: (208) 331-7929

LEGAL NOTICES

TitleOne
5660 E Franklin Rd., Suite 101
Nampa, Idaho 83687
(208) 475-1155
Order No.: 22465202
Smith / 22465230

Secured Land Transfers LLC
dba **TitleOne**
Successor Trustee
Sheri Coleman
By: **Sheri Coleman**
Trust Officer

NOTICE OF TRUSTEE'S SALE

On the 16th day of March, 2023, at the hour of 11:00 a.m. of this day (recognized local time), in the office of the Boise County Courthouse, 420 Main Street, Idaho City, Idaho 83631, in the County of Boise, State of Idaho, Secured Land Transfers LLC, a Delaware limited liability company dba TitleOne, as Successor Trustee, will sell at public auction to the highest bidder, for cash or cashier's check (cash equivalent), in lawful money of the United States, all payable at the time of sale in compliance with Section 45-1506(9) Idaho Code, the following described real property, situated in Boise County, State of Idaho, and described as follows to wit:

See Attached Exhibit A

The Trustee has no knowledge of a more particular description of the above referenced real property, but for purposes of compliance with Section 60-113, Idaho Code, the Trustee has been informed that according to the County Assessor's office, the address of **NNA NNA, Garden Valley, ID 83622**, is sometimes associated with said real property.

Said sale will be made without covenant or warranty regarding title, possession, or encumbrances to satisfy the obligation secured by and pursuant to the power of sale conferred in the Deed of Trust executed by **Donald R. Smith and Victoria L. Smith, husband and wife**, as Grantor(s), **Secured Land Transfers LLC**, a Delaware limited liability company dba **TitleOne**, as **Successor Trustee**, and **Fredrick A. Wegis or Mary E. Wegis also shown of record as Marry E. Wegis or Gregory Daniel Wegis, individually or collectively**, as Beneficiary, recorded **March 7, 2022**, as Instrument No. **278662**, in the records of Boise County, Idaho.

THE ABOVE GRANTORS ARE NAMED TO COMPLY WITH SECTION (45-1506)(4)(A), IDAHO CODE. NO REPRESENTATION IS MADE THAT THEY ARE, OR ARE NOT, PRESENTLY RESPONSIBLE FOR THIS OBLIGATION.

The default for which this sale is to be made is the failure to pay when due, under Deed of Trust Note, the entire loan balance immediately due and payable in the amount of \$425,000.00, for Principal, together with a \$20,000 risk fee due and payable on or before June 30, 2022, with unpaid accrued interest owing in the amount of \$32,714.25 as of November 2, 2022. All amounts are now due, together with unpaid and accruing taxes, assessments, late fees, trustee's fees, attorney's fees, costs and advances made to protect the security associated with this foreclosure and all are accruing until the date of sale, full satisfaction, or reinstatement of the obligation.

Therefore, the Beneficiary elects to sell or cause the trust property to be sold to satisfy said obligation.

Dated: 11/15/2022

Exhibit A

A tract of land situated in Sections 19, 20, 29 and 30, Township 9 North, Range 4 East, Boise Meridian, Boise County, Idaho, more particularly described as follows:

Commencing at a brass cap stamped 1925 marking the corner of Sections 19, 20, 29 and 30 of Township 9 North, Range 4 East, Boise Meridian, Boise County, Idaho; Thence North 01°31'02'' West a distance of 1299.96 feet (formerly North 00°47'43'' East, a distance of 1317.01 feet to a 5/8 inch iron pin) to a set 5/8 inch iron pin marking the South 1/16 corner of Sections 19 and 20; Thence along the Northerly line of the Southwest quarter of the Southwest quarter of said Section 20, South 89°55'32'' East a distance of 31.22 feet (formerly South 87°59'21'' East, a distance of 54.25 feet to a 5/8 inch iron pin and 2 inch iron pipe); Thence leaving said Northerly boundary of the Southwest quarter of the Southwest quarter of said Section 20, South 30°22'56'' East a distance of 203.40 feet; thence along a curve to the right, having a length of 51.10 feet, a radius of 225.00 feet, through a central angle of 10°00'47'', with a chord which bears South 23°52'32'' East a distance of 50.99 feet; Thence South 17°22'09'' East, a distance of 201.44 feet to the TRUE POINT OF BEGINNING; Thence North 88°12'08'' East a distance of 26.13 feet; Thence South 17°22'22'' East a distance of 6.59 feet; thence along a curve to the right, having a length of 14.60 feet, having a radius of 50.00 feet, through a central angle of 16°44'08'', with a chord which bears South 09°00'18'' East a distance of 14.55 feet; Thence South 00°36'14'' East a distance of 27.22 feet; thence along a curve to the right, having a length of 45.05 feet, having a radius of 75.00 feet, through a central angle of 34°25'05'', a chord which bears South 17°50'47'' East a distance of 44.38 feet; Thence South 35°03'19'' East a distance of 14.04 feet; thence along a curve to the left, having a length of distance of 58.36 feet, having a radius of 200.00 feet, through a central angle of 16°43'03'', a chord which bears South 26°41'47'' East, a distance of 58.15 feet; Thence South 18°20'16'' East, a distance of 85.61 feet; thence along a curve to the left, having a length of 46.45 feet, having a radius of 200.00 feet, through a central angle of 13°18'26'', a chord which bears South 24°59'29'' East a distance of 46.35 feet; Thence South 31°38'42'' East, a distance of 153.80 feet; thence along a curve to the left, having a length of 31.17 feet, having a radius of 125.00 feet, through a central angle of 14°17'08'', a chord which bears South 38°47'16'' East a distance of 31.09 feet; Thence South 45°55'50'' East a distance of 26.90 feet; thence along a curve to the right, having a length of 48.80 feet, having a radius of 125.00 feet, through a central angle

of 22°22'12'', a chord which bears South 34°44'44'' East, a distance of 48.49 feet; Thence South 23°33'38'' East a distance of 106.43 feet; Thence North 87°36'23'' East a distance of 277.21 feet; Thence North 04°05'45'' East, a distance of 74.54 feet; Thence South 85°54'15'' East, a distance of 283.53 feet; thence along a non-tangent curve to the left, having a length of 80.46 feet, having a radius of 75.00 feet, through a central angle of 61°28'00'', a chord which bears South 12°34'48'' West a distance of 76.66 feet; Thence South 18°09'12'' East a distance of 64.93 feet; thence along a curve to the right, having a length of 42.63 feet, having a radius of 117.00 feet, through a central angle of 20°52'30'', a chord which bears South 07°42'57'' East a distance of 42.39 feet; Thence South 39°38'06'' East a distance of 130.44 feet to a point on the Northerly right of way line of Highway 17, being 75.00 feet from the centerline of said Highway 17; Thence along said Northerly right of way line, South 39°38'06'' East (formerly South 37°51'52'' East) a distance of 25.00 feet to a 5/8 inch iron pin, being 50.00 feet from centerline of said Highway 17; Thence along the Northerly right of way line of said Highway 17, South 50°21'57'' West (formerly South 52°08'08'' West) a distance of 350.94 feet to 5/8 inch iron pin, being 50.00 feet from the centerline of said Highway 17; thence 73.90 feet along an offset spiral curve to the right having a theta of 12°00'00'', an overall spiral length of 189.53 feet, a chord bearing of South 50°55'44'' West (formerly South 52°41'55'' West) a chord distance of 73.90 feet to a 5/8 inch iron pin, being 50.00 feet from the centerline of said Highway 17; Thence North 37°55'43'' West (formerly North 36°09'29'' West) a distance of 40.00 feet to a 5/8 inch iron pin, being 90.00 feet from the centerline of said Highway 17; Thence 108.44 feet along an offset spiral curve to the right having a theta of 12°00'00'', an overall length of 181.15 feet, a chord bearing of South 56°17'55'' West (formerly South 58°05'42'' West) a chord distance of 108.29 feet to a 5/8 inch iron pin, being 90.00 feet from the centerline of said Highway 17; thence along a curve right, having a length of 229.93 feet, having a radius of 387.46 feet, having a central angle of 34°00'00'', with a chord bearing South 79°21'57'' West (formerly South 81°08'08'' West) a distance of 226.57 feet to a 5/8 inch iron pin, being 90.00 feet from the centerline of Highway 17; thence 34.95 feet along an offset spiral curve to the right having a theta of 12°00'00'', a chord bearing of North 81°16'17'' West (formerly North 79°29'59'' West) a distance of 34.90 feet (formerly 34.95 feet) to a 5/8 inch iron in, being 90.00 feet from the centerline of said Highway 17; Thence along the Northerly right of way line of said Highway 17, North 10°53'27'' East (formerly North 12°39'41'' East) a distance of 10.00 feet to a 5/8 inch iron pin, being 100.00 feet from the centerline of said Highway 17; thence 144.89 feet along an offset spiral curve to the right having a theta of 12°00'00'', a chord bearing of North 74°01'05'' West (formerly North 72°14'48'' West) a chord distance of 144.79 feet to a 5/8 inch iron pin, being 100.00 feet from the centerline of

said Highway 17; thence along a 220.95 foot offset spiral curve to the left having a theta of 12°00'00'', a chord bearing of North 75°49'21'' West (formerly North 74°03'09'' West) a distance of 220.51 feet to a 5/8 inch iron pin, being 100.00 feet from the centerline of said Highway 17; thence along a curve left having a central angle of 07°32'00'', a radius of 577.46 feet, a length of 75.93 feet, a chord which bears North 87°24'03'' West (formerly North 85°37'52'' West) a chord distance of 75.87 feet to a 5/8 inch iron pin, being 100.00 feet from centerline of said Highway 17; thence along a 220.95 foot spiral curve to the left having a theta of 12°00'00'', a chord bearing of South 81°01'15'' West (formerly South 82°47'25'' West) and a chord distance of 220.51 feet to a 5/8 inch iron pin being 100.00 feet from the centerline of said Highway 17; Thence South 76°49'57'' West (formerly South 78°36'08'' West) a distance of 265.27 feet to a 5/8 inch iron pin, being 100.00 feet from the centerline of said Highway 17; thence 64.76 feet along an offset spiral curve to the left having a theta of 08°00'00'', a chord bearing of South 78°36'08'' West (formerly South 78°19'56'' West) a chord distance of 64.76 feet to a 5/8 inch iron pin, being 100.00 feet from the centerline of said Highway 17; Thence South 13°58'08'' East (formerly South 12°11'55'' East) a distance of 50.00 feet to a 5/8 inch iron pin, being 50.00 feet from the centerline of said Highway 17; thence along a 104.04 foot offset spiral curve to the left having a theta of 08°00'00'', an overall offset spiral length of 206.98 feet, a chord bearing of South 74°02'57'' West (formerly South 75°51'03'' West) a chord distance of 104.01 feet to a 5/8 inch iron pin, being 50.00 feet from the centerline of said Highway 17, and on the Easterly boundary of Garden Valley Summer Home Sites; Thence along said Easterly boundary of Garden Valley Summer Home Sites North 04°51'54'' East a distance of 117.30 feet (formerly North 06°36'47'' East, a distance of 117.21 feet to a found 5/8 inch iron pin); thence along said Easterly boundary of Garden Valley Summer Home Sites along a curve to the left, having a delta of 18°40'00'', a radius of 275.00 feet, an arc length of 89.59 feet, a chord bearing of North 81°38'46'' East (formerly 83°23'39'' East) and a chord distance of 89.20 feet, to a found 5/8 inch iron pin; thence along said Easterly boundary of Garden Valley Summer Home Sites, on a curve to the left, having a delta of 82°10'00'', a radius of 100.00 feet, an arc length of 143.41 feet, a chord bearing of North 31°13'46'' East (formerly North 32°58'39'' East) and a chord distance of 131.43 feet, to a found 5/8 inch iron pin; thence along said Easterly boundary of Garden Valley Summer Home Sites, on a curve to the left, having a delta of 31°30'00'', a radius of 125.00 feet, an arc length of 68.72 feet, a chord bearing of a chord which bears North 25°36'14'' West (formerly North 23°51'21'' West) and a chord distance of 67.86 feet, to a found 5/8 inch iron pin; Thence along said Easterly

boundary of Garden Valley Summer Home Sites; Thence North 41°21'14'' West (formerly North 39°36'21'' West) a distance of 170.93 feet, to a found 5/8 inch pin; thence along said Easterly boundary of Garden Valley Summer Home Sites, on a curve to the right, having a delta of 102°50'00'', a radius of 20.00 feet an arc length of 35.90 feet, a chord bearing of a chord which bears North 10°03'46'' East (formerly North 11°48'39'' East) a chord distance of 31.27 feet, to a found 5/8 inch iron pin; Thence along said Easterly boundary of Garden Valley Summer Home Sites, North 61°28'46'' East (formerly North 63°13'39'' East) a distance of 68.93 feet, to a found 5/8 inch iron pin; thence along said Easterly boundary of Garden Valley Summer Home Sites, on a curve to the left, having a delta of 26°45'00'', a radius of 125.00 feet, an arc length of 58.35 feet, a chord bearing of North 48°06'16'' East (formerly North 49°51'09'' East) a chord distance of 57.83 feet, to a found 5/8 inch iron pin; Thence along said Easterly boundary of Garden Valley Summer Home Sites, North 34°43'46'' East (formerly North 36°28'39'' East) a distance of 48.00 feet, to a found 5/8 inch iron pin; thence along said Easterly boundary of Garden Valley Summer Home Sites, on a curve to the left having a delta of 103°00'00'', a radius of 134.83 feet, a chord bearing of North 16°46'14'' West (formerly North 15°01'21'' West, a chord distance of 117.39 feet, to a found 5/8 inch iron pin; Thence along the Easterly boundary of Garden Valley Summer Home Sites, North 21°43'46'' East (formerly North 23°28'39'' East) a distance of 143.57 feet, to a found 5/8 inch iron pin; thence along said Easterly boundary of Garden Valley Summer Home Sites, North 68°16'14'' West (formerly North 66°31'21'' West) a distance of 218.05 feet to a found 5/8 inch iron pin; Thence along said Easterly boundary of Garden Valley Summer Home Sites, North 16°21'14'' West (formerly North 14°36'21'' West) a distance of 69.12 feet, to a set 5/8 inch iron pin; Thence North 88°12'08'' East a distance of 851.01 feet (formerly North 90°00'00'' East, a distance of 851.38 feet) to a set 5/8 inch iron pin marking the POINT OF BEGINNING.

Published in the Idaho World on 11/23, 11/30, 12/7 and 12/14/2022.



Professional Work * Sensible Rates
High Ground Electric & Construction, Inc.
Full Service Electrical Contractors
*Generators
*Remodels
*Service Upgrades
*Free Estimates
23 1/2 hour service
Licensed*Bonded*Insured
208-344-0605 * 208-342-0519

CLASSIFIEDS

FOR RENT:

FULLY FURNISHED RENTAL 3 Bedroom 1.5 baths, in Downtown Crouch, to see pictures, go online to www.unclebillybobs.com and click on Mansion, or use this link...<https://www.unclebillybobs.com/the-mansion/>

Rental includes, Water, Sewer, Garbage (Dumpster), snow plowing of the roads, Starlink Satellite for Internet and Smart TV's (there are 2, 1-65" and 1-32"). Also includes all furnishings, bedding, towels, dishes, pots and pans, Smart TV's etc.. Minimum 1 month rental. available Jan. 1, 2023. Call 208-462-5262, text 208-781-0497 or email info@unclebillybobs.com for more info. Uncle Billy Bob's requires tenant screening, if this is a roommate situation, either one person is responsible, or all roommates will need to qualify. \$1000 refundable deposit. \$1800/month. Tenant pays power and propane. Propane is only for the range.

9 Mikylar, Horseshoe Bend \$3000/mo

WATERFRONT LOCATED ON THE MAIN OF THE BEAUTIFUL PAYETTE RIVER IN HORSESHOE BEND. This 6 Bedroom, 6 Bath Custom Home Is Situated Steps Away From The River. Large 4 Car Garage. Enough Room For Your Whole Family. Has Irrigation. This Home Is Located Only 20 Minutes From Boise. Year Around Access. First months rent (\$3000) and \$3000 security deposit is due on accepted lease. Rent is \$3000/mo due on the first of the month. There is a \$500 pet deposit if applicable. Home is on a well and septic. No city service fees. Tenant is responsible for yard maintenance, all utilities.

FOR SALE:

Tilt-trailer for hauling 10 ft. long by 6 or 7 ft. wide, sided inside with metal, single axle, needs new wiring, good tires. Selling as is, at \$500. or obo. Cash only. Call 208-793-1369 for info. and address.

FOR RENT:

Office/ Business space available for rent in Idaho City. Located in the Kesler Insurance Building on Montgomery St. \$500 a month. Call Jacob Kesler @ 208-884-3733 or Rachel O'Brien @ 208 392-5223.

HELP WANTED:

911 EMERGENCY COMMUNICATION OFFICER - SHERIFF'S OFFICE, BOISE COUNTY

Employment type: full-time
THIS POSITION answers emergency calls while coordinating, and disseminating critical services with the aid of specialized equipment. This position is the lifeline between the public requesting assistance and the first responders of Boise County that include: police, fire and medical assistance. On the job training provided by the Sheriff's 911 department.

TO APPLY: Apply online at www.boisecounty.us/sheriff.aspx

(non law enforcement application). Must successfully pass the County's pre-employment and subsequent random drug tests. Must also pass a stringent Sheriff's Office background and selection process to include: Oral Board, Skills Testing, and Polygraph Examination.

Gold Mine Gas Station/Kayak Pizza Hiring for all shifts, starting wage \$13.00/hr Apply in person

Boise County Roll Clerk Position opening, located in Idaho City, which is approximately a 45 minute drive from East Boise area. This is a full time position (40 hours/week) and will potentially require overtime to meet critical deadlines. This position will perform a wide range of duties that support the function of the Assessor's Office. Qualifications: High school diploma or equivalent, excellent computer skill in Excel/Microsoft Office products and excellent written/oral communication skills. This position will pay up to \$16.41/hour, included benefits are: Health insurance, paid vacation, paid sick time, paid holidays and PERSI retirement. To apply, submit to cjuszczak@co.boise.id.us the following: (1) a filled out Boise County application form; (2) a cover letter; and (3) a resume.

Boise County Road & Bridge Department has an opening for a full time Equipment Operator in the Horseshoe Bend area. Starting salary \$18.00 per hour. Benefits include health insurance, paid vacation, paid sick time, paid holidays and PERSI retirement. Application and Job Description can be printed from the Boise County website www.boisecounty.us, or call (208)793-2380. To apply, submit a filled-out Boise County employment application to mnewman@co.boise.id.us or mail to Boise County Road & Bridge Department, 39 Brownlee Road, Horseshoe Bend, ID 83629. Pre-employment drug testing is required. Boise County is an Equal Opportunity Employer and gives Veteran's preference in its hiring practices.

Boise County Road & Bridge Department has an opening for a full time Equipment Operators in the Garden Valley area. Starting salary \$18.00 per hour. Benefits include health insurance, paid vacation, paid sick time, paid holidays and PERSI retirement. Application and Job Description can be printed from the Boise County website www.boisecounty.us, or call (208)793-2380. To apply, submit a filled-out Boise

County employment application to mnewman@co.boise.id.us or mail to Boise County Road & Bridge Department, 39 Brownlee Road, Horseshoe Bend, ID 83629. Pre-employment drug testing is required. Boise County is an Equal Opportunity Employer and gives Veteran's preference in its hiring practices.

Trudys Kitchen is now hiring Servers, Line Cooks, Prep Cooks and Dishwashers.

Garden Valley School - Substitute for Teachers Send application and supporting documents to scorn@gvsd.net Classified Application: <https://www.gvsd.net/page/employment>

Basin School District is looking for substitute teachers. Applications are available at the high school office. Applicants must have a high school diploma and, if hired, pass a background check. Please call the Basin district office at 208-392-4183 extension 1274 if you need any additional information. Address for application pick up is 100 Centerville Rd, Idaho City ID., 83631

Basin School District #72 in Idaho City is accepting applications for a full time bus driver. Must have a Class B CDL. Salary is dependent on experience. Full benefits are included.

District #72 is an equal opportunity employer. Applications are available at Idaho City High School office. Ask for a classified employment application. Salary starts at \$14.00 an hour and up depending on experience. Questions call Russ Taylor at 208-284-7966.

COMMUNITY SERVICES:

Garden Valley Food Bank/ Pantry: Distribution will be the 1st and 3rd Thursday of every month at the GV Senior Center from 9:30-11:30am.

Alcoholics Anonymous - Meet at the Crouch Community Church on Mondays & Thursdays at 5:30pm.

Alcoholics Anonymous - Meet in Idaho City at 7pm on Fridays at the Library, 123 Montgomery St.

Crouch: Al-Anon support group for friends and family of alcoholics meets weekly at Crouch Community Church on Tuesdays at 6:00 p.m. in the library.

Horseshoe Bend Pantry is open on the 2nd & 4th Friday of the month, located at the WICAP building from 10-2. Food boxes

are prepacked and delivered to cars. No choices until further notice.

Horseshoe Bend - Tuesday's & Fridays-Hot meals at The Horseshoe Bend Senior Center.

Lunch is served at 12:15 (Bingo immediately following). The center is located at 109 S. Riverside Drive. Recommended donation is \$5.00 for seniors at least 65 years of age, \$6.00 for everyone else. For transportation or meal delivery information call (208) 793-2344.

Horseshoe Bend Bingo: Each Wednesday at The Longbranch Saloon. 349 Hwy Horseshoe Bend. 6 p.m. 25 cents per card. Proceeds benefit the American Legion.

Horseshoe Bend - Wednesdays- American Legion Bingo. Corner Cafe, 446 ID-55 Horseshoe Bend. Games start at 6:00pm, twenty-five cents per card, 10 games 50/50 winnings split.

Volunteers Wanted - No Experience Necessary. The Idaho City Volunteer Fire Protection District is looking for volunteers. Do you feel a desire to give back to your community? If so, then the Fire Department needs YOU! We are an all-volunteer department made up of men and women of all ages. We meet once a month and also train once a month plus an occasional training with other departments. We meet on the second Thursday of every month at 7pm at the Idaho City Fire Station, 3861 Highway 21, Idaho City.



Terrace Lakes RESORT

<p>Office Open Daily</p> <p>Mon. - Thurs. 8:30am - 4:30pm Fri. 8:30am - 5:00pm Sat. - Sun. 8:00am - 5:00pm</p> <p>Restaurant Mon. & Tues. 8am - 2pm Can order in Bar after 2:00 Wed. & Thurs. 8am - 8pm Fri. & Sat. 8am - 9pm Sun. 8am - 8pm</p>	<p>101 Holiday Drive, Garden Valley, ID 83722 Office: 462-3250 • Pro Shop: 462-3314</p> <p>Our golf season is over and the snows are starting to fly. Soon we will be playing SNOLF so check our website at terrancelakes.com to see when we play. Plan on staying with us—we have motel rooms, cabins and condos to rent. Call the office at 208-462-3250 or book online at terrancelakes.com. Our geothermal pool will be open Thanksgiving Day from 10 am to 8 pm.</p> <p>We also show all the Boise State Football games and can take reservations for seating—call 462-3250.</p> <p>We have our new menu now with nightly dinner specials. We still have BBQ ribs on Friday nights and Prime Rib on Saturday nights.</p> <p>We are also open every day for Breakfast, which is served until 11:00 am</p> <p>We are located 3 miles north of Crouch up the Middle Fork Road off Warm Springs Road.</p>	<p>Hot Springs Pool Open Daily & to Public</p> <p>Mon. - Thurs. 10am-8pm Fri. & Sat. 9am-10pm Sun. 9am-8pm</p> <p>Lounge Mon. - Thurs. 2pm-Close Fri. 12pm-Close Sat. & Sun. 10am-Close</p> <p>Golf Shop Closed for Season</p>
---	--	---

BUSINESSES

- Lara Alexander - Real Estate.....(208) 869-4644
- Anthony Insurance Group - Medicare..(208) 477-7057
- Berg Plumbing.....(208) 899-9404
- Billy Bob's Rentals & Event Center.....(208) 462-5262
- Boise County Sanitation, LLC.....(208) 488-5908
- Castle Mt. Homes - Contractor.....(208) 462-2882
- Dave's Welding/Auto Repair.....(208) 392-4270
- Donna's Place in Placerville.....(208) 392-9666
- Garibaldi Charters.....(800) 900-4665
- Garden Valley Dental.....(208) 462-2220
- Garden Valley Properties.....(208) 462-4620
- Home Boutique.....(208) 392-5223
- High Ground Electric(208) 342-0519
- Jeannie Kittelmann Realtor.....(208) 703-6307
- McDonough Group..(208) 985-6931 or (208) 901-5741
- Medicare Benefits.....(208) 350-9933
- Miller Enterprises Trash pick up(208) 793-2561
- Mt. Properties for Sale.....(208) 331-7929
- Rachel O'Brien Realtor.....(208) 392-5223
- Severance Sand & Gravel(208) 462-3005
- Sourdough Lodge(208) 259-3326
- Terrace Lakes Resort(208) 462-3250
- Terry Peterson - Real Estate.....(208) 608-4329
- Trinity Home Care & Resource.....(208) 938-1760
- Twisted Turkey.....(208) 392-9757
- Valley Christian Center.....(208) 793-2448
- Frank Walker - Law Firm.....(208) 462-6388

Proudly Serving East Boise County

208.488.5908

Offering Weekly Pickups/ Scheduled Junk Haul-offs Dump Trailers Available

bocosan@outlook.com

Still Gluten Free! No MSG Added.

BOISE COUNTY

Idaho City Considers a Four-day School Week

BASIN SCHOOLS -- The Boise Basin School District has been looking for input from parents, students, and community members as they seriously consider the option of going to a four-day school week. Elementary Principal Jamie Pilkerton said the option has come to their attention again after the pandemic, because families asked administrators to possibly revisit the option of a four-day school week. Pilkerton admitted that she was skeptical, but she and other school administrators have invested time into researching, calling, and making contacts at schools that have successfully implemented the four-day school week or some proximal variation of it. She said that there were several options the Basin School District is considering. They will present at least four possible calendars at a Janu-

ary school board meeting and hope to adopt a final schedule in February.

The surveys showed the pros according to parents, including that their children would have more "down time," which could lead to better mental health. However, there was concern for overall student achievement.

Administrators suggested that the Fridays could be used for teacher development, two-hour tutoring sessions, and athletics. However, Pilkerton said that this decision would come with pros and cons, and acknowledged that, "anytime you make a change, you make a ripple."

High School/ Middle School Vice Principal ReBekha Lulu presented the graphs and data gathered from the surveys and thanked the community for over one hundred responses.

She said they are considering a four-day model or a hybrid, and stressed that they are still in the information gathering process, and are reaching out to several schools throughout the state of Idaho.

The school administrators assured those present at the Town Hall Meeting on Tuesday, December 13th, at the Idaho City High School cafeteria that there will be more surveys, QR codes to click on, and further information made available, in order to best serve the needs of the community.

For more information, concerns, or suggestions, please call 208-392-6631 or email Vice Principal Lulu at rlulu@basinschools.net



Quail foraging for food in Garden Valley. Photo by Linda Ruppel, DDS

Christmas Village



A beautiful new addition to Gary Pelley's miniature Christmas village in Garden Valley. Photo by Linda Ruppel, DDS

Volunteers are Educated in Extrication



Lowman Volunteer Fire District and EMS personnel complete a course on extrication.

Photo by Paul Rekow

By Paul Rekow

LOWMAN – Thirteen firefighters and EMS personnel from Lowman Volunteer Fire District (LVFD), Garden Valley Fire Protection District (GVFPD), and East Boise County Ambulance District (EBCAD) completed the Idaho 20 Hour Vehicle Extrication Operations Course taught by Tyler Bryner of Elite Extrication. The course was sponsored by Lowman VFD in preparation to take over the vehicle extrication function from

EBCAD in the Lowman area. The next step is for the Boise County Board of Commissioners to transfer the ownership of necessary equipment to LVFD.

The first responders learned about vehicle construction, scene safety, teamwork, and how to take apart a car with the "Jaws of Life." The weather was brisk (20 degrees) and there was light snow on the ground, but that added to the reality of being prepared to work in any environment where there might be trapped

victims in a car crash.

Boise County first responders are volunteers from our communities who give of their time to train and respond to emergencies, ranging from fires and traffic accidents to emergency medical calls. If you are interested in becoming a volunteer, please reach out to the Fire Department or Ambulance near you. Our Boise County emergency service organizations need your help!

THE IDAHO WORLD

Yearly Rates For Delivery To:

- Boise County: \$30.00
- Treasure Valley: \$45.00
- (Zip Codes 837XX, 836XX - outside Boise County, and 979XX)
- Other U.S.A.: \$50.00
- Subscribe Online: idahoworld.com

YES! Enter My Subscription Information:

My Check Is Enclosed. Gift New Renewal

Name _____

Address _____

City _____ State _____ Zip _____

Email _____

THE IDAHO WORLD
P O Box 220; Idaho City, ID 83631