



THE IDAHO WORLD

“The Noblest Motive Is The Public Good”

Vol. 157, No. 21

Wednesday, February 19, 2020

Idaho's Oldest Newspaper
Established 1863

THE VOICE OF BOISE COUNTY

Chinese Lantern Festival, pg 4; Wolverine Senior Night, pg 6; LEGO Win, pg 7; GV Wolverines Win, pg 12

Chili Cook-off Heats Up in Historic Idaho City

IDAHO CITY -- This year's chili cook-off, to quote *Sesame Street*, was brought to you by the letter "O" and the number "1"! Ostrich meat was the key ingredient that clinched the big win for the *Gold Mine Grill & Saloon*. They swept both first place from the judges, and took the coveted People's Choice Award. Rhonda Jameson, organizer with the Idaho City Chamber of Commerce, said this win had been the first of its kind in all her years with the event. Representative Dorothy Moon, District 8 and official

chili judge three-times running, stated with conviction that although all the chilies were good, "There was definitely a winner!"

The event gains in popularity each year, and the staging area was moved to accommodate even more people. Main Street was closed and chili lines stretched around the historic buildings of downtown Idaho City.

2020 Chili Winners:
1st Gold Mine, 2nd year contestant, Steve Twilegar &

Jerry Roberts
2nd Preston's Boulder Creek Chili, returning contestant, Earl Preston

3rd Chili Chili Bang Bang
Art Burget, JR Wallsworth, George Jeffes, 10th year

Special thanks to Chili Judges: Mowbray Brown - Idaho City Rotary Club, Kat Casey - Food blogger "Cooking with Kat", Kat's father Joseph Romano - past Chili Cook-off winner, Idaho City School's

~ continued on page 12



Taking first place among the judges and the people's choice, *The Gold Mine* cleaned up with their prize-winning chili.

Photos by Eileen Capson



The event is gaining in popularity; Main Street was closed to accommodate all the chili-goers.



The Gold Mine's secret winning ingredient.

Photo by Georgene Thomas

HAPPENINGS

Idaho City: Marriage Conference at the Idaho City Christian Center on Feb. 16 & 23 and Mar. 1 & 8. Sunday Video Series. See page 5!

Garden Valley: Garden Valley Senior Center Singles and Doubles informal social Thursday, February 20, at 6:00 PM. Bring snack and your own beverage and join others to relax, meet new people, laugh and have fun.

Garden Valley: Hospital District Board Meeting on Feb. 28. Crouch city hall. At 5:30pm

Garden Valley: Lincoln Day Event on March 28th at the Community Center for a candidate forum.

Get A Better Deal On A Subscription!
Your Name Would Be Here & Delivered To Your
Address Every Week.
Check The Back Page To Subscribe

GV Future City Team Wins!



Garden Valley's Future City team won best model and 5th place overall in the national competition. Photo taken via live stream [https://futurecity.org/] on Tuesday, February 18, from Washington, D.C. The team won \$750 for their school.

Photo by Linda Ruppel, DDS

WEST BOISE COUNTY

Horseshoe Bend Varsity Loses to Garden Valley Rivals

By Tracy Koslosky

WEST BOISE COUNTY

-- Garden Valley seniors had plenty to celebrate when they took on the Horseshoe Bend Mustangs on Friday, February 14th at home. Valentine's Day, Senior Night, and the 84-41 win against their fellow Long Pin Division team, the Horseshoe Bend Mustangs. The Mustangs started out in the hole with only one full game eligible substitute (three junior varsity teammates, junior Po-Lin Tsai and sophomores Karson Krosch & Jedi Graham were on the bench but only eligible for one quarter since they were playing a full game against the J.V Wolverines prior to the varsity match) and when senior starter Calvin Drake went out with an injury with 3:47 left on the clock in the first period that substitute, junior Caedmon Graham came in to finish the game. The Mustangs kept up with the Wolverines during the first quarter and ended the period down 13-16. During second quarter play Garden Valley outscored the Mustangs on the fast break

racking up 35 points to Horseshoe Bend's 17 points to end the first half 33-51 in Garden Valley's favor. The Mustangs had a poor showing during the last half of the game, connecting for only 5 points in the third quarter before a blow to the nose of senior Austin Fry took him out with 6:33 remaining in the period. Going into the last quarter down 38-76, Fry returned to the game and added the only points the team would have from a field goal and a free throw and the Mustangs took the 41-84 loss. Fry was the top scorer with 13 total points (5 field goals and 3 free throws). Sophomore Decker Larson had 12 total points (two 3 point field goals and 3 field goals). Junior Logyn Bromgard had 9 total points (one 3 point field goal, 2 field goals, and 2 free throws). Caedmon Graham had 2 field goals for 4 points and junior Hunter Howerton had one 3 point field goal. In the first round of the Long Pin Division District Tournament the Mustangs took a first round loss to the Tri-Valley Titans in



Senior Austin Fry sinks the last point of the game during The Horseshoe Bend Varsity Mustang's away game against Long Pin Division rivals, the Garden Valley Wolverines. The Wolverines came out victorious in the 84-41 game on Friday, February 14. Pictured from left to right: Wolverine senior # 20 Richard Lindstrom, Mustang junior # 5 Logyn Bromgard, Wolverine senior # 10 Chase Ross, Mustang sophomore #23 Decker Larson, Wolverine senior # 15 Caleb Van Dyk, Wolverine senior #25 Conagher Cox, and Mustang Senior #5 Fry. Photo by Tracy Koslosky

McCall on Monday, February 17. The team will be in McCall again on Saturday, Febru-

ary 22 where they take on the state tournament. Council Lumberjacks in their final attempt at a berth in the

Horseshoe Bend Community Dance Received Much Love

By Tracy Koslosky

HORSESHOE BEND

-- The inaugural Horseshoe Bend Community Dance was a huge success. Held on Thursday, February 13 in the school annex, the dance was put on by the Horseshoe Bend High School Student Council. Mayor Pat Goff was in attendance as were

faculty, students, and family members from the elementary school, middle school, and high school. Attendees dined on pizza provided by dance sponsors, The Locking Horns Riverside Restaurant. Roses and pictures were available for a small fee. The dance was a fundraiser for the high school's

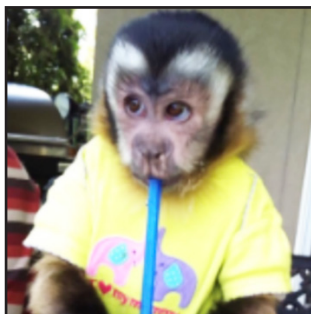
student council. Throughout the two-hour event dancers were on the floor doing the Cha Cha Slide, the Hokey Pokey, and the Twist. The dance was such a hit that the council is hoping to have another one before the school year ends.



Community members take to the floor during the Horseshoe Bend High School Student Council Community Dance on Thursday, February 13. Photo by Tracy Koslosky



Please welcome Tracy as our front desk face and sweet southern voice on the telephone!, we are sad to say goodbye to Tami Smith, who has been with GVP since day one 1/2001 and with Diane since 1996 as her personal assistant and then front desk person at Valley Real Estate. Tami is still handling the book keeping duties from her new winter location in Kentucky, she'll be back home in the summers. We miss Tami's smiling face and cheery disposition, none the less, we are pleased to welcome Tracy Ross, our newest addition to Garden Valley Properties! She holds a BSM in Business Management and an Associate in Applied Science and has spent most of her professional career working in Engineering, Administration, and Emergency Services (911 Dispatcher). She has lived in Idaho for nearly 10 years and absolutely loves the mountains and the snow here in Garden Valley! Tracy is the proud owner of a capuchin monkey named Bella and she spends most all her free time raising her; lots of monkeying around!"



Terrace Lakes
RESORT

Office
Open Daily
8:30am - 4:30pm

Restaurant
Mon. & Tues.
8am - 2pm (food served in Bar or take-out after 2:00 till 8pm)
Wed. & Thurs.
8am - 8pm
Fri.
8am - 9pm
Sat.
8am - 10pm

Lounge
Mon. & Tues.
2pm - Close
Wed. & Thurs.
3pm - Close
Fri.
12pm - Close
Sat. & Sun.
10am - Close

101 Holiday Drive, Garden Valley, ID 83722
Office: 462-3250 • Pro Shop: 462-3314

Golf Memberships for \$500.00—call the office for information

Winter has arrived. With several feet on the ground, we have great snow conditions for cross country skiing, snowshoeing and sledding down our hill. We do have ski and snowshoe rentals. After a fun day in the snow, come in and have dinner with some wine or your drink of preference. Then enjoy a dip in our geothermal pool. We also have motel rooms, cabins or condos to stay the evening. You can call our office at 462-3250 to make your reservations.

Prime Rib every Friday and Saturday Night
Come visit the Wine Room for specials and buy the special bottle for your dinner. Also, try our Sunday night dinner specials.

We are located 3 miles north of Crouch up the Middle Fork Road off Warm Springs Road.

Hot Springs Pool

Open Daily
Mon. - Thurs.
10am-8pm
Fri.
10am-10pm
Sat.
9am-10pm
Sun.
9am-8pm
Open to the Public

Golf Shop
Closed for the Season

EAST BOISE COUNTY

Basin School District Levy Facts



Basin School District Levy Facts

Why is the Basin School District offering the community a supplemental levy? Many of you may not know that the state has a funding shortage of over \$200 million. The state allocates a given amount of funds based on average daily attendance for specific expenditures. This means the Basin School District must spend money on specific items dictated by the state.

What will the levy fund?

The levy will fund student programs and facilities that are not funded through specific state funding or funding that falls short such as: Preschool, District Security, Athletics/Clubs/Extracurricular, Activity Transportation, Safe Buildings, Alarm Monitoring and Bell, Community School Coordinator, Curriculum, Field Trips, STEM Program & Coding, and Contingency Fund.

How much is the Levy?

\$425,000 for two years
How much will it cost the average homeowner? After a \$100,000 homeowner's exemption the cost would be \$106.65/year for each \$100,000. Market values are expected to rise again this spring which would cause a decrease in cost.

Will the average homeowner pay more than they are paying now? No, the cost per \$100,000 will be less than what the average home owner is paying now.

When can I vote?

March 10th
 I really want to know more about the levy, so how do I find out more? The Basin District has a webpage at <https://basinschools.net/levy> if you would like to dig into the budget and specific numbers. Superintendent Brian Hunicke, elementary Principal Jamie Pilkerton, or middle high school Principal Sean Porter would be happy to answer your questions.

When asked, "What are some of the best values the school has to offer the community?" Superintendent Hunicke responded, "I would say by far the greatest long term investment the community can make is the preschool. All but one student who has attended the Basin Preschool has graduated and the student Go On rate is higher than the state average. A close second would be our team of SRO and community schools coordinator, these two individuals have made an enormous impact on the school and community. Third, the district has been working hard developing a strong STEM (Science Technology Engineering Mathematics) program, our elementary school is close to earning a STEM accreditation from the state. We hope to work our way up through the high school next."

High School Seniors Take Center Court



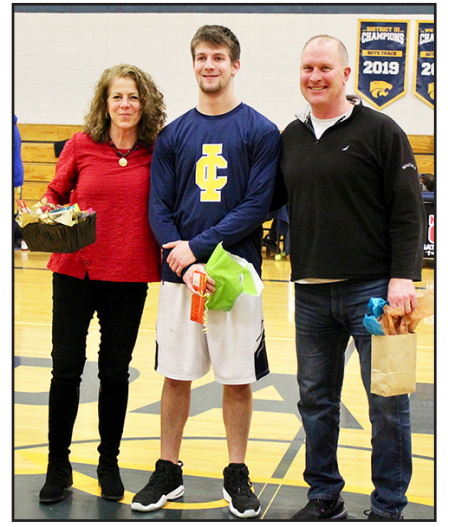
Juan McFarlane with parents, John McFarlane and Jamie Pilkerton.



Sam Roeber with family, Jason & Courtney, and brother Ian.



Quinten Turner with family, parents Steve & Gina Turner, grandmother Kara, and brother Blake holding Greyson.



Drew Pawek with parents, Tom Pawek and Mary Prisco.



Clayton Ledbetter with Mr. Roeber.

Photos by Eileen Capson

THE IDAHO WORLD

"The Voice of Boise County"

Idaho's Oldest Newspaper
 Established September 29, 1863

Published weekly by:
Idaho World Publishing, LLC
 P.O. Box 220; Idaho City, ID 83631
 Eileen Capson - *Editor-in-Chief*
editor@idahoworld.com
 (208) 202-9288
 Send articles & legals to:
editor@idahoworld.com

Correspondents:

Eileen Capson - Idaho City
eileen@idahoworld.com, 208-202-9288
 Tracy Koslosky - Horseshoe Bend
tracy@idahoworld.com, 208-793-2834
 Jennifer Haney - Lowman/ Garden Valley
jennifer@idahoworld.com, 208-259-3817
 Linda Ruppel, DDS - Garden Valley photographer
proschick@msn.com

Contributors:

Jerry Branson
 Don Fry
 Rick Murray
 Georgene Thomas

Copy Editor: Twila Neiwert

The opinions expressed in paid advertisements and in articles do not necessarily represent the views of this newspaper or of its staff.

USPS (256-120) - PERIODICAL Postage paid at Idaho City, Idaho, and at additional mailing offices under the Act of March 3, 1879. Annual subscriptions are \$30 for delivery within Boise County, \$45 for delivery to addresses with zip codes starting with 836, 837 or 979, and \$50 to other U.S. addresses.
POSTMASTER: Send address changes to - The Idaho World;
 PO Box 220; Idaho City, ID 83631

New Medicare Plans

Come see all the Medicare options

Seminars in Idaho City

Now Being Scheduled.

Call for Times & Locations

No Obligation to Enroll.



CarrieAnne Kowalczyk-Gonzalez

We take the confusion out of comparisons.



Please RSVP at 208-350-9933
 Personal Touch Ins. & Benefits

BOISE COUNTY

Chinese Lantern Festival in Placerville



Written and photos
by Dan Gasiorowski

PLACERVILLE -- On February 15th, the Boise Basin Boosters held its annual Valentine's Day Chinese Lantern Festival. It was extremely well-attended, filling the Placerville Park Pavilion to overflowing, with an estimated 50 adults and children in attendance. Hot Dogs and hot chocolate were provided and people brought additional food to be enjoyed by all. After all were fed, Shane Chestnut led the Placerville pyrotechnic team in setting off the fireworks display. This was soon followed with a mass of Chinese lanterns filling the sky with red, white, and blue colors.



Consider Hosting an Exchange Student

Submitted by Tiffany Kanally

BOISE COUNTY -- Visiting International students aged 15 - 17 years old are seeking host families in the area for an academic year or semester. Exchange students from countries such as Brazil, Norway, China, and Germany become full members of their host family while learning their family's traditions and sharing their own. It's a great way to learn a new culture and add a little spark to your daily routine while promoting international diplomacy at a local level.

The sponsoring program is Forte International Exchange Association (FIEA), a non-profit organization who has

offered the opportunity for academic and cultural exchange to international high school students who would like to come to the United States on a J-1 Visa since 2000.



Host Families can be married or single adults (25 years or older), with or without children. Host families can have children in the house or be empty nesters. Host Families reflect the diversity of American culture! In addition, Host Families provide a room/shared room, three meals a day and loving support, as well as a desire to share American culture and learn about a new one.

Host Families may select a student that best fits in with their own family. FIEA's ex-

change students are some of the brightest: the criteria for their student selection includes qualifying their English and academic ability, maturity and flexibility, and a desire to promote cross-cultural understanding. All Forte students speak English, and bring their own money for personal expenses, and are fully medically insured.

To learn more about the possibility of becoming a host family please contact FIEA, Area Director, Tiffany Kanally at 509-979-2693 email at tiffanyk@forteexchange.org and visit us at www.forteexchange.org and click host families.

WINE SALE SPEND & SAVE EVENT

	SPEND - \$30	SAVE - \$5	
	SPEND - \$50	SAVE - \$10	
	SPEND - \$75	SAVE - \$20	
	SPEND - \$100	SAVE - \$30	
	SPEND - \$150	SAVE - \$50	
	SPEND - \$300	SAVE - \$100	

Terrace Lakes Resort Wine Room
101 Holiday Drive - Garden Valley, Idaho
208-462-3250

Includes: All Wine, Champagne, Port, ZingZang, Wine Accessories, Totes, Corkscrews, Glassware, Snacks. No special orders; In stock items only
Hours: Friday 5pm - 8pm - Saturday & Sunday 4pm-8pm Sale Runs for the Month of February 2020

Severance Sand & Gravel

Garden Valley Lowman Horseshoe Bend

462-3005

Readi-Mix Concrete

Concrete Blocks, Septic Systems

We Accept Visa and MC
Delivery or U-haul



License # RCB34099

NOTE FROM CHIEF DEPUTY CORONER MIKE JOHNSON:

There have been three deaths recently within the county where residents lived alone. It is a concern that the next of kin be contacted, but this often becomes difficult. He asked that this vital information kindly be placed in a place that can be easily seen by medical and emergency personnel.

Professional Work * Sensible Rates

High Ground Electric & Construction, Inc.

Full Service Electrical Contractors

- *Generators
- *Remodels
- *Service Upgrades
- *Free Estimates

23 1/2 hour service

Licensed*Bonded*Insured
208-344-0605 * 208-342-0519

ATTENTION CANDIDATES:

PLEASE SUBMIT YOUR PLATFORM AND REASON(S) FOR RUNNING FOR LOCAL COUNTY OFFICES - 350 WORD LIMIT & 1 PHOTO ON OR BEFORE APRIL 10TH.
editor@idahoworld.com

FYI - Presidential Primary & Basin School District (Idaho City) Levy Question election is on March 10th
State & County Primary election is on May 19th
(local candidates have from March 2 - 13 to submit their Declaration of Candidacy paperwork to the Boise County Clerk's Office)

BOISE COUNTY

OPINION ~ Letters to the Editor

In Lee Wilkinson's ad for Boise County Sheriff, he says: "I want to bring back protect and serve." My question is: "Where did it go?" The current sheriff and his deputies do this all the time, so what is there to bring back when we already have this?

The current sheriff and his deputies talk to people constantly, in the stores, on the streets, everywhere. They are very friendly and helpful, so this doesn't need changing.

Mr. Wilkinson says he "wants to institute a Reserve Deputy program." We already have one and it works very well. If he wants a bigger program with "younger folks" how will he pay for this? And will there be insurance for these reserve deputies and "youth folks" if they get hurt on patrol? Or will they get paid, if they do an eight-hour shift?

Where does Mr. Wilkinson get his Law Enforcement credentials? Can he pass the Police Officer Standards and Training course? If not, all he can do is sit behind a desk and cannot go on patrol, so much for having extra eyes and ears on the road.

Just a few questions that I think need some answers.

GL Thomas
Boise County resident

Please vote "YES" on the School Levy, March 10!

Our local children are our most valuable assets, and I hope you'll join me in supporting the Supplemental Levy. It will make a huge difference in helping our children if passed, and will be very detrimental to our children if it isn't. Because it is taking the place of a previous levy, there should be no additional cost to each of us homeowners. Our children are worth the cost!

I recently visited the Pre-school which has 16-18 four-year olds learning, interacting, and playing three days per week all day. This wonderful place with caring teachers, is preparing those children for a very successful future education and will greatly increase their odds of graduating from high school and becoming contributing members of our community. If passed, the levy will provide for two teachers and needed supplies. We need to be preparing our children for the future!

The levy will also partially

fund the valuable School Resource Officer, also pay for some athletics fees, uniforms and transportation, upgrade academic curriculum and partially fund very important STEM classes. Additionally, the buildings are in need of repair – the roof is rusting and leaking, a new bell system is needed, as is a dry fire sprinkler system for the safety of our students. These things can't wait.

I don't have children or grandchildren of my own here in the local schools, but feel strongly that as community members, we should use this opportunity to show our local children that we support them. As Director of Mountain Kids Day Camp, I know we have wonderful children and teens in Idaho City who deserve excellent schools and education! Please say "YES" to the kids by voting "YES" on March 10.

Jennifer Alban
Idaho City

I am writing as a concerned citizen of Boise County regarding lack of appropriate employee disciplinary action by our county commissioners; specifically regarding Boise County Emergency Manager, Bob Showalter. There have been several concerns and complaints addressed to our commissioners regarding Mr. Showalter's unethical behavior during 2019 and as recent as February 6, 2020.

Some individuals have and will continue to argue that Mr. Showalter should not be held accountable for his actions or behavior while not "on the clock" as a Boise County employee. I unequivocally disagree and believe the behavior of any county employee or elected official whether during working hours or on their own personal time has a profound reflection on our county. Boise County's Employee Personnel Policy clearly outlines expected conduct of county employees whether it is during working hours or on personal time. Mr. Showalter has shown clear contempt of employee conduct as outlined in this policy on more than one occasion without disciplinary action by the county commissioners. This being said, I find it very alarming when our county commissioners continue to turn a blind eye regarding Mr. Showalter's defamatory and disrespectful conduct despite repeated writ-

ten and verbal complaints. A letter was sent to the commissioners on February 10, 2020. To date, only one commissioner responded to my concern. This is unacceptable! The Boise County Commissioners' and other elected officials work for the residents of Boise County and as such we must hold them accountable to do their jobs in the best interest of Boise County and its residents. Blatant disregard by the commissioners to respond to a legitimate grievance generates questionability as to their integrity and leadership as public servants of Boise County.

Sincerely,
Brigitte Boyd
Robie Creek

This is the letter I wrote to a person who was turned away at the ticket area, and evidently told incorrectly by a cashier that the tickets were only available, pre-sale, online. The mugs ran out, but as I said, 600 more cups were sold at the event.

Thank you for your input. We did sell 500 \$10 mugs/tickets online. Then we sold 600 more \$5 cups/tickets at the event, starting at 11:00. The tickets weren't just pre-sold tickets. We ran out/cut off the sale of those cups, when the chili tasting began, because there wouldn't have been enough chili for everyone who bought tickets, if we had oversold the event.

After that, I gave out free cups, that could be used to taste 3 chili's served by 3 restaurants, that didn't start serving until 1:00. And frankly, those people said that other people gave them tickets to taste contestant chili's, so they were satisfied, since their tickets were free and they still were able to taste contestant chili.

I heard you had been turned away, by one of the cashiers, already, but when I went looking for you, in the crowd, with a megaphone, I couldn't find you.

We are planning to order 700-1000 commemorative mugs, next year, and only sell the \$5 cups, at the event.

Please accept my apology,
Rhonda Jameson,
Event chair
Chili Cook-off
Idaho City

Lower Property Taxes?

Want lower property taxes in 2020? See if you qualify

BOISE, IDAHO — Feb. 18, 2020 —You could qualify for some relief from your property taxes. Idaho's Property Tax Reduction (PTR) program reduces property taxes on eligible homeowners' primary Idaho residence and up to one acre of land by as much as \$1,320.

"Many people don't know about this benefit," said Pam Waters, coordinator of the PTR program for the Idaho State Tax Commission. "We want to make sure that everyone who is eligible applies for the relief."

To qualify, you must have been in one of the following categories by Jan. 1, 2020:

Recognized as disabled by the Social Security Administration, Railroad Retirement Board, Federal Civil Service, the U.S. Department of Veterans Affairs, or a public employee retirement system not covered by these agencies. (Idaho's PERSI is covered by Social Security.)

- Widow(er)
- Blind
- Fatherless or motherless

child under 18 years old

- Former prisoner of war
- Age 65 or older

The program requires that you have no more than \$31,280 in total income in 2019. You also must be a U.S. citizen or legal permanent resident and own and live in your home by April 14, 2020.

You can get an application for property tax reduction on the Tax Commission's website at tax.idaho.gov or from your county assessor. You must file an application with your county assessor by Wednesday, April 15, 2020.

For more information:

- Contact any county assessor's office in Idaho
- Call the Tax Commission at (208) 334-7736 in the Boise area or toll free at (800) 334-7756

• Visit the Tax Commission's Property Tax Reduction (Circuit Breaker) webpage.

- See Boise County's information on Property Tax Reduction in the ad located at the bottom of page 11 of this week's *Idaho World* newspaper.

Questions? 208.392.4218



Marriage Conference

Offered as a Sunday video series

Feb. 16 & 23, March 1 & 8

11:00 AM-12:30 PM

Idaho City Christian Center

3853 Highway 21

Idaho City

No charge to attend & Childcare provided

Reception and drawing for prizes March 8

GARDEN VALLEY HOMES & LAND

Office 208.462.6102 Email LAlexanderSellsHomes@gmail.com



Lara Alexander

ABR Associate Broker/Realtor

Cell | 208.869.4644

www.GardenValleyHomesandLand.com

BOISE COUNTY

Wolverines Basketball Senior Night in Garden Valley

By Jennifer Haney
GARDEN VALLEY --

Garden Valley celebrated its Boys Basketball seniors Friday night February 14, 2020 prior to the last game of the season in which Garden Valley hosted Horseshoe Bend. Five seniors were honored as well as a junior who is an exchange student. The ceremony began with the six players on the court while they and the audience watched a few video recaps of the player's moments on and off of the court over the year. They were then joined by their families and each given a basket of goodies and a framed jersey with their respective numbers on it. These players have not only worked exceedingly hard over their basketball career but have also been encouraging and inspiring as Garden Valley School community members. The six players that were honored are:

- #10 Chase Ross
- #13 Joaquin Fuhriman
- #20 Richard Lindstrom
- #10 (JV) JD Bosques-Mendoza
- #15 Caleb Van Dyk
- #25 Conagher Cox

We wish them all great luck in all of their future endeavors.



#10 (Varsity) Chase Ross and his family



#13 Joaquin Fuhriman and his family



#10 (JV) JD Bosque-Mendoza and his Exchange Family

Photos by Jennifer Haney



#15 Caleb Van Dyk and his family

Valentine's Day Junior Varsity Garden Valley vs. Horseshoe Bend

Written by Tracy Koslosky
WEST BOISE COUNTY --

A Valentine's Day massacre of sorts occurred in Garden Valley on Friday, February 14. Fortunately no blood was shed, but the Horseshoe Bend Junior Varsity Mustangs suffered during their 21-75 defeat at the hands of the Garden Valley Wolverines. Playing a full 4 quarter game for the first time this season, the Mustangs were outnumbered two to one. The 5 man team had no room for errors and no respite from playing. Down 5-21 at the end of the first period the Mustangs went into the locker room at the half with the score 9-38 in favor of Garden Valley. The team came back refreshed and scored more in the third period than they had in the first half and went into the fourth quarter down 19-62. With plenty of substitutes on the Garden Valley bench keeping the Wolverine players well-rested for offensive as well as defensive plays, Horseshoe Bend freshman Jedi Graham was the only one to connect with the basket during the final period



Horseshoe Bend freshman Jedi Graham attempts a free throw during the Horseshoe Bend Mustang-Garden Valley Wolverine game on Valentine's Day in Garden Valley. The Wolverines took the conference win 75-21. Pictured left to right: Wolverine #5 sophomore Hudson Fields, Wolverine #3 junior Eli Van Dyk, Mustang #33 sophomore Karson Krosch, Wolverine #12 freshman Nathan Gillette, Wolverine #21 freshman Trayson Corn, and Mustang #11 Graham.

and Horseshoe Bend took the Long Pin Division Conference game loss 21-75. Graham was the game's high scorer with one 3 point field goal and 4 field goals

for a total of 11 points. Junior Po-Lin Tsai (one 3 point field goal, one field goal) and sophomore Karson Krosch (2 field goals, 1 free throw) had 5 total points.



#20 Richard Lindstrom and family



#25 Conagher Cox and his family

BOISE COUNTY

Basin LEGO League Team Wins at Regionals

By Adalin Greenway,
5th grade
BASIN SCHOOL
DISTRICT

Recently, the Basin Elementary First LEGO League team won the "The Innovation Project Award" at a regional competition for LEGO robotics. This year's theme was, "City Shaper." The Basin group had to choose something in our town to upgrade so it could be all-abilities accessible. The team decided to make a plan to upgrade our school playground.

The participants in the LEGO League group include Daniel Evans, Cearra Franklin, Adalin Greenway, Logan Jackson, Cooper Smith, Blake Taylor, and Taylor Vigeant. Mrs. Megan Hunicke (the teacher of 5th grade) and Mr. Brian Hunicke (the superintendent) were the coaches.

Every time that the LEGO League team met after school together, they all did programming, working on their posters for their representation, building/upgrading the robots, and making slides for certain questions that their group had to answer for the competition.

This year's team was the very first team at Basin Elementary to get a certificate and 150 points. The team has enjoyed the activity and are hoping to advance even further in next year's competition.



"City Shaper," this year's Basin Elementary team won the Innovation Project Award for LEGO robotics.

Photos submitted by Basin Elementary



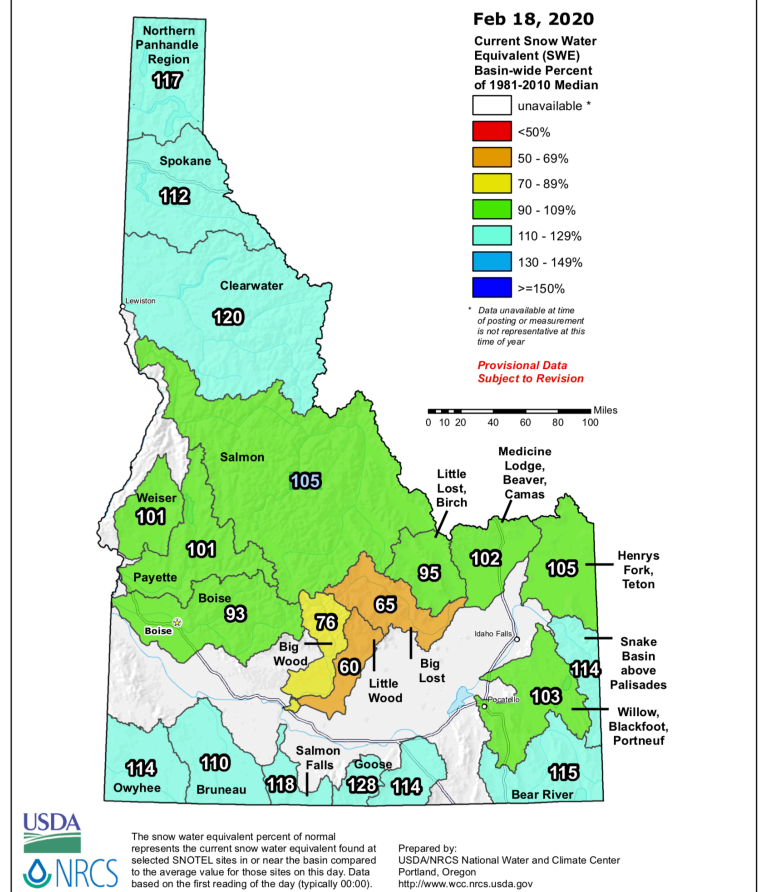
Basin Elementary LEGO League team members: Daniel Evans, Cearra Franklin, Adalin Greenway, Logan Jackson, Cooper Smith, Blake Taylor, and Taylor Vigeant.



Elk playing peekaboo.

Photo by Linda Ruppel, DDS

Idaho SNOTEL Current Snow Water Equivalent (SWE) % of Normal



Lonnie McDonough **Hailey McDonough**
(208) 901-5741 (208) 985-6931

Silvercreek
REALTY GROUP
THE MCDONOUGH GROUP

Elect Lee Wilkinson Boise County Sheriff

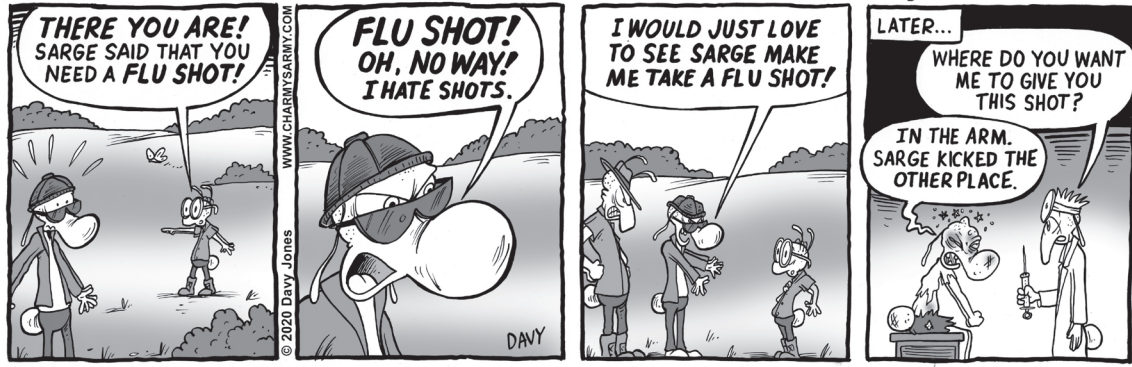
1. I want to bring back Protect and Serve, as an elected official it's the duty of the sheriff to Protect and Serve.
2. I will make sure I am available to the public for comment, concern or just a friendly chat.
3. I will institute a reserve deputy program that will put more eyes and ears out in the community, it will give people- especially younger folks - a chance to learn and a possible new career path. I believe that using the reserve program to hire deputies will give us a high quality and dedicated deputy.
4. Using a community-policing model I want to engage more with the public and have the deputies engage more with the public. The deputies and I would do more to help citizens resolve issues rather than just directing them to the court system.
5. I also will keep pressure on the small time criminal; keeping pressure on small time criminals will help to reduce larger crime.

Paid for by the committee to elect Lee Wilkinson

BOISE COUNTY

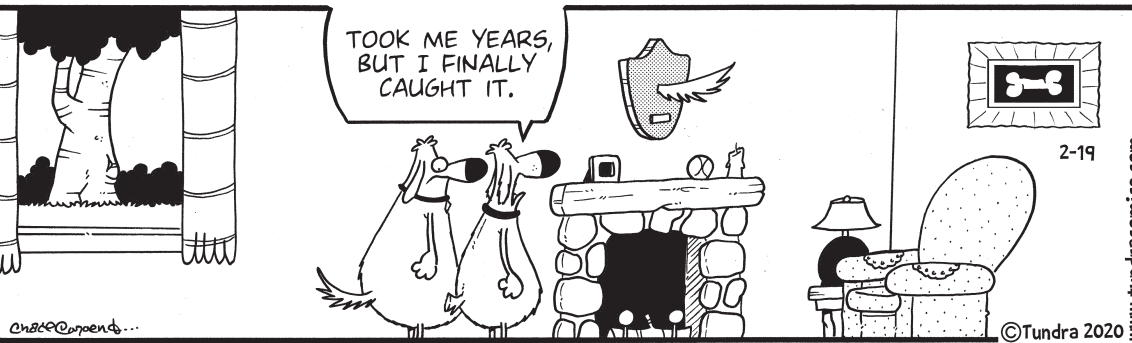
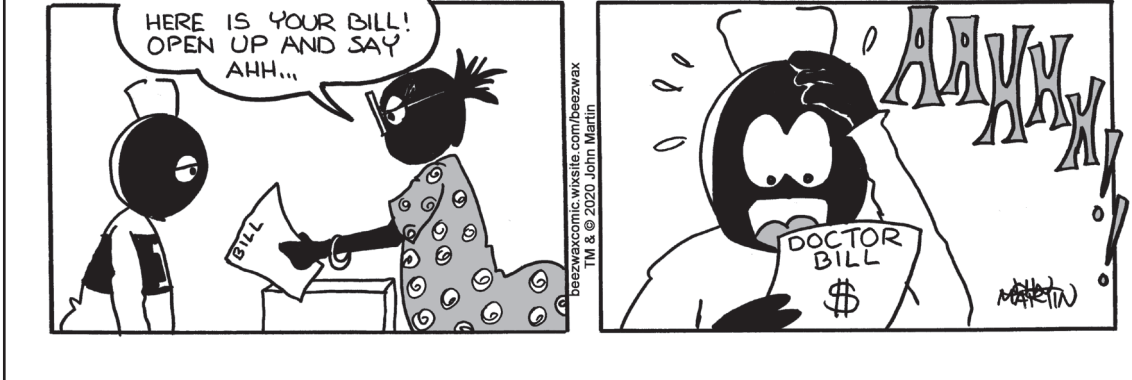
CHARMY'S ARMY

Created by DAVY JONES



BEEZWAX

By John Martin



BONNA'S PLACE
 P.O. Box 510
 110 E. Granite St.
 Placerville, Idaho 83666
 (208) 392-9666
GROCERY

Mountain Properties For Sale
 Lots from 1 - 40 Acres in Boise County
 Terms - 2% down and 1% per month.
 We also have property in Adams Co. in larger parcels on the Middle Fork of Weiser about 20 miles from Tamarack Resort.
 For current list call: (208) 331-7929

Trinity Home Care & Resource is looking for female and male Care Givers and/or CNA's to join our powerful team. We believe that we can improve and maintain a high quality of life for our clients in their homes by providing excellent services delivered with compassion and integrity. Trinity currently has the need for employees in Boise County. We provide unskilled Home Care for individuals that need assistance to stay home, safe, for as long as possible. If you are interested please contact Nohemi at (208) 938-1760 or by email at team@theri.com

TIME-TESTED INTERNET FOR RURAL IDAHO

Wilderness Wireless

WE'RE LOCAL (Since 2003) **Idaho Owned**

INSTALL (By Professional Techs) **\$129**

CONTACT US (Website or Phone) **WildWISP.com 208.685.2723**

BOISE COUNTY

OBITUARIES



Lois A. Wade
1931 - 2020

Lois Arlene Abbott was born on September 24, 1931 in Red Willow County, Kansas to Robert and Delinda (Linnie) Abbott. She had five brothers; Floyd, Delbert, Robert Jr, Morris, and Darrell.

The Abbott family moved to Danbury, NE shortly after Lois was born. Lois attended McCook Junior College, and taught school in Marion, NE. in 1949 and 50.

In 1951, she went to Indiana on a Saturday night, where her Uncle Tom had a band. This is where she met the love of her life, a Navy man, Harley E. Wade, from Danbury, NE.

Harley and Lois were married on June 3, 1951 and moved to Boise ID, where they started their new life together raising their children; Deborah Sue, Michael Edward, Marcy Lynn, and Julia Ann. Lois was a "room mother" for all her children, a Brownie leader, and a Cub Scout Den Mother. Harley and Lois were also faithful servants with the Shriners.

After raising their children, Lois attended Links School of business, working at David's Fabrics, Techni-Chem, and finally the State of Idaho Department of Commerce.

In 1992, Harley and Lois moved to Idaho City, where Lois commuted to Boise for work, retiring in 1996. Harley and Lois spent most of the next several years loving on their grandchildren, traveling in their airstream trailer, and enjoying each other.

In 2001, having Lost Harley, Lois moved back to Boise, where she managed the Americana Campground until 2006, when she truly retired. She spent her time attending functions and volunteering at Wright Church, enjoying friendships and the growing number of great grandchildren, and of course walking her dogs.

On February 2, 2020. Harley and Lois Wade were reunited in the kingdom of heaven. A reunion that was awaited by many, including their children Marcy, who died as an infant, and Mike who died in 2015.

Lois is survived by her daughters; Deborah, and Julia, her grandchildren; Marcie, Shanna, Wade, Abby, Eden, and great-grandchildren; Noe, Braeden, Kamryn, Tanner, Adalynn, Emmy, Stormy, and Boston.

Lois' celebration of life will be held Saturday 2/22/2020 at 11:00am located at Wright Community Church on 4822 W Franklin Rd. Boise, ID.



Richard Allen Abbott
1965 - 2020

Richard Allen Abbott passed away peacefully, surrounded by love on February 12th, 2020. He was born November 12th, 1965 in Boise, ID to Larry and Rachel. He was the third of four boys, with older brothers Nite Hawk and Duane, and younger brother Jerry. In 1987, Rick became the proud father to Travis, Whitney, and the following year to Jen.

In 2003, he married the love of his love life, Dona Maria, and added 4 more children to his family: Cobyel, Briona, Matea, and Kade. His family continued to grow with

the addition of sons-in-law, Chance, Joe, Rocky, AJ, Drew, and daughter-in-law Laura. He later became a grandfather to Braydon, McKaiLee, Rigin, Kaid, Amara, and Burk. Rick enjoyed spending time with his family, especially outdoors. He was an avid football and NASCAR fan, and had a love for music that was contagious. We will always remember him sing-

ing, laughing, and dancing. Rick was welcomed with open arms to the other side by Eric, Lois, Kade, Lari, and Ruthele who preceded him in death. A Celebration of Life will be held at the Idaho City Community Center on March 7, 2020 at 2pm.

Please feel free to honor Rick's love of sports by wearing your favorite sports apparel to celebrate his life.



Timothy Earl Gann
1945 - 2020

Tim was born on June 17, 1945 in Bakersfield, California. He passed to our Lord on January 20, 2020 in Horseshoe Bend, Idaho.

Tim was preceded in death by parents, Catherine Hester and Woodrow Thomas Gann, and three brothers - Tom, Terry, and Tracy Gann.

Tim is survived by brother, Thad Gann, and numerous nieces, nephews, and cousins.

A memorial service in Tim's memory will be held on February 22, 2020, at 2:00 p.m. at the Horseshoe Bend Branch of The Church of Jesus Christ of Latter-day Saints located at 447 Highway 52.

Sourdough Lodge
Restaurant,
Motel, Hot Tubs, Cabin,
Gasoline,
RV Park, Liquor Store

Hours:
Open 7 Days A Week

259-3326, Fax 259-3325
MP 84, Hwy. 21, Lowman

MILLER ENTERPRISES INC.
208-793-2561
Horseshoe Bend, Idaho

Garbage Service to most of Boise County. We also have Construction & Demo Containers. Call for pricing. Locally Owned for 40 Years!
208-793-2561

Idaho City Hardware
208-392-2271
Gardner Construction
208-392-4576

Red Fir Wood Pellets- \$265.00 a ton.
\$5.30 a bag!!!!

Road Construction, Gravel, Roadmix, Sewer Installation, house pads, etc.

GENERAL REPAIR

Dave's Welding and Repair
Cars, Trucks, 4x4s, ATVs
Motorcycles & RVs
TuneUps - Lube & Oil
Transmissions ~ Engines
Exhaust Systems ~ Brakes
Trailer Repair & Fabrication

Dave Selene
Owner
208-392-4270
101 Cottonwood St.
Idaho City - 83631

CMH
CASTLE MOUNTAIN HOMES, LLC

208-462-2882

Locally Owned/Licensed Contractor
Insurance Restorations * Remodeling
New Construction * Carpet Cleaning
Free Estimates

Syringa

CHIROPRACTIC & ACUPUNCTURE

Dr. James Jardine
866-8962

John Ptak Construction, LLC
(208) 342-6013
Serving Boise County-
Licensed & Insured
All Stages of Construction

Idaho State
License #RCE11001

BASIN SCHOOL DISTRICT

3D PRINTING WORKSHOP
Open to the Community

MONDAY, FEBRUARY 24TH FROM 3:20 TO 5:00
IN THE
BASIN INNOVATION STATION
AT BASIN ELEMENTARY
(SIGNS WILL BE POSTED)

BRING A PHOTO TO TURN INTO A LITHOGRAPH!

CLASSIFIEDS

TAX SERVICES:

FREE INCOME TAX ASSISTANCE AND FILING.

Idaho City Library 2/1/2020 to 3/7/2020 every Saturday 1-4.

Garden Valley Library 2/6/2020 to 4/9/2020 every Thursday 1-4.

Or by appointment call 208 392-9934.

FOR SALE:

2000 Subaru Legacy Outback AWD, Automatic & everything works. New Exhaust, \$2000 or Best Offer. Rob or Lesli 208-462-5974.

Quadra-Fire Classic Bay pellet stove, heats large house, works great, well maintained, comes with stove pipe. \$750.00...208-462-3114

Heavy Duty Power System Generator, HD 17000BD Diesel, silent air cooled electronic start, 4 stroke, fuel injected, AC/DC output, on wheels, never been started. Pd. \$6,000 new, asking \$5,000 or best offer. In Garden Valley. Rob or Lesli 208-462-5974.

HELP WANTED:

BOISE COUNTY:

The Board of Commissioner of the Placerville Fire Protection District have announced a vacancy for District 2 which comprises Units 1, 2,3 and 8 of Star Ranch. Letters of interest need to be mailed to the Placerville Fire Protection District, 100 E Granite Street Placerville, Idaho 83666 by March 6, 2020 at 5:00 PM. The Commissioners will make the decision at the March Board of Commissioner meeting on March 7, 2020 at 10:00 AM at Donna's Place Placerville.

Duquette Pines Property Manager (Part-Time Paid position).

We are looking for a personable, motivated person with the ability to work alone and as part of a team. Must have strong problem-solving skills, diagnostic capabilities along with superior customer relation skills AND THE ABILITY TO ACCEPT DIRECTION AND INDEPENDENTLY COMPLETE ASSIGNED TASKS.

CANDIDATES SHOULD PREFERABLY HAVE experience in road maintenance, plumbing, electrical and mechanical situations and devices. Position DOES HAVE AN ON CALL COMPONENT for emergencies. Duties are to be performed as directed by the HOA Board.

Candidates THAT LIVE IN Duquette Pines WILL BE GIVEN PREFERENCE FOR THE POSITION, HOWEVER CANDIDATES IN THE IDAHO CITY AREA WILL ALSO BE CONSIDERED.

Contact Gunther Volker at gvdqhoa@gmail.com or 208-340-7352 or any other board member for more information or to submit your resume. (2/19)

911 EMERGENCY COMMUNICATION OFFICER - SHERIFF'S OFFICE, BOISE

COUNTY

911 EMERGENCY COMMUNICATION OFFICER - SHERIFF'S OFFICE, BOISE COUNTY

Employment type: full-time Starting wage: \$14.50/hour

THIS POSITION answers emergency calls while coordinating, and disseminating critical services with the aid of specialized equipment. This position is the lifeline between the public requesting assistance and the first responders of Boise County that include: police, fire and medical assistance. On the job training provided by the Sheriff's 911 department.

- \$14.50 per hour to start
- Public Employees Retirement System of Idaho (PERSI), a pension plan
- Excellent and comprehensive benefits package.

MAJOR COMPONENTS OF DUTIES:

- Ability to stay calm and calm others in emergency situations
- Utilizes complex computer and dispatch systems, working between multiple screens, agencies, and databases, while communicating with caller, and emergency services

- Accurately enters incident and responder records for legal proceedings and/or public inquiry
- Dispatches fire, medical, and emergency responders
- Monitors and maintains responder status to ensure safety

DO YOU QUALIFY?

- Do you have at least a High School Diploma or GED; Must complete an Emergency Communications Officer Course within eighteen months (18) of hiring.
- Do you possess or have the ability to obtain a valid driver's license and be insurable?
- Must have the ability to keyboard 35 WPM

TO APPLY: Apply online at www.boisecounty.us/sheriff.aspx (non law enforcement application). Must successfully pass the County's pre-employment and subsequent random drug tests.

Must also pass a stringent Sheriff's Office background and selection process to include: Oral Board, Skills Testing, and Polygraph Examination.

Garden Valley School District 71 - Elementary School Teacher (2020-21 School Year)

Qualifications: Bachelor's Degree, Teaching Certificate

Please complete a Certified Application, available at www.gvsd.net. Submit application to scorn@gvsd.net or at Garden Valley School Administration Office, 1053 Banks Lowman Rd., Garden Valley Idaho.

Garden Valley School District 71 - Paraprofessional Special Education / Title I

Special Education Paraprofessionals assist students with special needs under the direction of the Special Services Director. Paraprofessionals generally work in

an inclusionary setting (i.e. least restrictive environment). Special Education Paraprofessionals help special needs students, and care for their physical, emotional health and safety, affirming their abilities, and striving to promote dignity in all relationships. Qualifications: High school diploma (or GED) AND 1) Two years of college (32 credit hours) OR 2) Associate's degree OR 3) Rigorous standard of quality on formal state or local assessment. Classified Application and Job Description available at www.gvsd.net. Submit application to scorn@gvsd.net or at Garden Valley School Administration Office, 1053 Banks Lowman Rd., Garden Valley Idaho.

The Census bureau is in need of 50 more people in Boise County. Apply on line at 2020CENSUS.GOV/JOBS Pay is now \$16.00 pr/hr and .58 cents pr/mile

COMMUNITY SERVICES:

We are announcing an open board position(s) for the Garden Valley Hospital Taxing District. The qualifications outlined by statute require board members be a registered voter and a resident within the GV Hospital Taxing District. We encourage interested parties to respond with a brief introduction. Please respond to gvhtdchair@gmail.com.

Garden Valley Recreational Board Announces Board Position Vacancy, Sub-District I

The Board of the Garden Valley Recreational District is seeking interested people to fill the Board vacancy for Sub-District I (roughly the area encompassing City of Crouch, Mountain View Subdivision, Anderson Creek, and Kenneth Baker Subdivision).

Garden Valley Recreational District is seeking qualified candidates for two positions that include a yearly stipend: Treasurer and Secretary. If you have Secretarial and/or Bookkeeping skills please contact us. For questions about the Garden Valley Recreational District, the application process, or boundaries of the vacant Zone, please email: info@gvrecdistrict.org.

Garden Valley Senior Center: Aerobics is at 4 on Wednesdays and Fit and Fall Proof is at 3 on Tuesdays and Thursdays. Guided programs each and every week. It's Free!!

Garden Valley Food Pantry:

The GV Food Pantry will now be distributing only on the 2nd Friday of every month from 4-5 pm. Located at the Calvary Chapel Church on the Middlefork Road in Crouch. Non-perishable foods or cash donations accepted. Contact Toni at 462-6929 or 462-4620.

Alcoholics Anonymous - Meet at the Crouch Community Church on Mondays & Thursdays at 5:30pm.

Crouch: Al-Anon support group for friends and family of alcoholics meets weekly at Crouch Community Church on Tuesdays at 6:00 p.m. in the library.

Horseshoe Bend Pantry is open on the 2nd & 4th Friday of the month, located at the WICAP building.

Event space available for rent Horseshoe Bend Ladies Club Reasonable rates: Contact Linda (208)793-3169 or Gloria (208)861-5322

Please leave message if no answer & phone number

Horseshoe Bend - Tuesday's & Fridays-Hot meals at The Horseshoe Bend Senior Center. Lunch is served at 12:15 (Bingo immediately following). The center is located at 109 S. Riverside Drive. Recommended donation is \$5.00 for seniors at least 65 years of age, \$6.00 for everyone else. For transportation or meal delivery information call (208) 793-2344.

Horseshoe Bend - Wednesdays- American Legion Bingo. Corner Cafe, 446 ID-55 Horseshoe Bend. Games start at 6:00pm, twenty-five cents per card, 10 games 50/50 winnings split.

Idaho City Food Pantry: At

the Senior Center every 2nd and 4th Wednesdays from 11:30am to 2:00pm.

Idaho City: Fit & Fallproof Class on Tuesday & Thursday from 10am to 11am at the Boise Basin Senior Center.

Interested in getting a Ham Radio License?

Ham Radio License and Study The Boise County Amateur Radio Emergency Service Group is holding a Study/ Test session on the 3rd Saturday of each month. Please contact Ron Wilson, AD7DQ, at 208-781-0677 or liuidh208@gmail.com for more information and to reserve a seat.

The Idaho City Community Club has tables and chairs for rent. If you are doing a reunion, party or just hosting a dinner, tables are \$3.00 each and chairs are .50 cents each. Contact Cheryl Teeter at 208-392-4389 to reserve.

Snow cones are available for private functions. The Idaho City Community Club has a snow cone machine that they will bring to your events with two people to operate the machine.

Make the snow cones with several different flavorings. Call Georgene Thomas at 208-392-4230 for more information. All profits from our snow cones goes to support local student scholarships.



Proudly serving East Boise County with all your refuse hauling and transportation needs. Offering Weekly Pickups/ Scheduled Haul-offs
bocosan@outlook.com
Still Gluten Free!

BUSINESSES

Boise County Sanitation, LLC.....(208) 488-5908
 Castle Mt. Homes - Contractor.....(208) 462-2882
 Dave's Welding/Auto Repair.....(208) 392-4270
 Donna's Place in Placerville.....(208) 392-9666
 Garibaldi Charters.....(800) 900-4665
 Garden Valley Properties.....(208) 462-4620
 Gary Brown's Mt. Motors.....(208) 462-6134
 High Ground Electric(208) 342-0519
 Idaho City Hardware.....(208) 392-2271
 John Ptak Construction(208) 342-6013
 Lara Alexander - Real Estate.....(208) 869-4644
 McDonough Group..(208) 985-6931/(208) 901-5741
 Medicare Benefits.....(208) 350-9933
 Miller Enterprises Trash pick up(208) 793-2561
 Mt. Properties for Sale.....(208) 331-7929
 Open Door Store in Lowman.....(208) 259-3348
 Severance Sand & Gravel(208) 462-3005
 Sourdough Lodge(208) 259-3326
 Syringa Chiropractic/ Acupuncture....(208) 866-8962
 Terrace Lakes Resort(208) 462-3250
 Terry Peterson - Real Estate.....(208) 608-4329
 Trinity Home Care & Resource.....(208) 938-1760
 Frank Walker - Law Firm.....(208) 462-6388

I wish we could have spent your birthday together.
Happy Birthday, Shane Piece.
 Sarah

LEGAL NOTICES

Public Works Construction Advertisement for Bids

Owner: Wilderness Ranch Owners Association
Facilities and Mailing Addresses: 46 Wilderness Ranch Road, Boise, ID 83716
Call for Bids from the Wilderness Ranch Owners Association for sealed bids to be received at Mountain Waterworks (1161 W River St. STE 130 Boise, ID 83702) until **2:00 p.m. local time on Thursday, March 12, 2020** for the Project identified as "Wilderness Ranch Corrosion Control and Water Meter Box Fittings Replacement". The Project consists of installing a sodium carbonate and orthophosphate chemical feed system, updating the water treatment plant PLC, and replacing metallic fittings located within water meter boxes. This project is funded by the Idaho Department of Environmental Quality State Revolving Loan Fund (DW 1810). All bidders must be familiar with and comply with the Project's American Iron and Steel, Davis Bacon, Equal Employment Opportunity/Affirmative Action (EEO/AA) and Disadvantaged Business Enterprise (DBE) requirements. **Date and time of bid opening: Thursday, March 12, 2020 at 2:05 p.m. local time** at which time the bids will be publicly opened and read. Tallied results will be provided to all bidders by end of business the next day. Bids will not be accepted by email or fax. No pre-bid meeting will be held. Requests for information on the documents should be directed to Derek Probst, PE at dprobst@mountainwtr.com or 208-780-3990. Questions will be accepted until Thursday, February 27, 2020 at 5:00 p.m. local time.

Contract Documents: Digital copies of the plans, specifications and contract documents, may be obtained at www.questcdn.com upon payment of \$20.00. Log on to Quest CDN and enter Project Number 6724102. Any addenda will be issued electronically and available at the same Quest CDN Project Number. Please contact Quest CDN at (952) 233-1632 or info@questcdn.com for assistance in free membership registration, downloading, and working with this digital project information. It is the bidder's responsibility to obtain a copy of the Idaho Standards for Public Works Construction (ISPC) specifications which are required to be used for this project. A bid bond in the amount of 5% of the total bid amount, including any add alternates, shall be submitted with the sealed bid. All bids submitted shall be in compliance with applicable public works construction laws for the State of Idaho, including but not limited to Idaho Code 67-2310 and Idaho Code 54-1902. The Wilderness Ranch Owners Association reserves the right to reject any and all bids and the right to waive any informalities contained in any bid.

Published in the Idaho World on 2/12/2020 and 2/19/2020.

Notice of Meeting to Review and Correct Irrigation Assessments for 2020

Pursuant to Section 50-1807, Idaho Code, notice is hereby given that at the Regular Council Meeting on March 14, 2020, the Mayor and Council shall review and correct as necessary the 2020 assessments levied and assessed for the City of Placerville Irrigation System. The meeting will be held at Placerville City Hall, 110 E. Granite Street, Placerville, Idaho. The assessment roll is available for examination by interested persons in the office of the City Clerk.

Julie Randolph
 City Clerk
 City of Placerville

Published in the Idaho World on 2/19/2020.

ORDINANCE NO. 2020-01 Annexation and Zoning Amendments

AN ORDINANCE OF THE CITY OF CROUCH, IDAHO, WITH RESPECT TO CERTAIN LAND WITHIN THE CITY OF CROUCH, IDAHO, ANNEXING CERTAIN LANDS INTO THE CITY OF CROUCH; AMENDING THE ZONING MAP TO SHOW THE ANNEXED PARCEL A, B, and C, ZONED AS RESIDENTIAL; PROVIDING A REPEALER CLAUSE; PROVIDING A SEVERABILITY CLAUSE; AND PROVIDING AN EFFECTIVE DATE.

BE IT ORDAINED By the Mayor and City Council of the City of Crouch, Idaho:

Section 1. That the following described real property, a parcel of land located in SE1/4, of Section 16, T.9 N., R.4 E., B.M., located in Boise County, Idaho, as set forth in Exhibit A, which is hereby incorporated, is hereby annexed into the City of Crouch and zoned Residential.

Section 2. That the following described real property, A parcel of land located in the SE1/4 of Section 16, T. 9 N., R. 4 E., B.M., located in Boise County, Idaho, as set forth in Exhibit B, which is hereby incorporated, is hereby annexed into the City of Crouch and zoned Residential.

Section 3. That the following described real property, A parcel of land located in the SE1/4 of Section 16, T. 9 N., R. 4 E., B.M., located in Boise County, Idaho, as set forth in Exhibit C, which is hereby incorporated, is hereby annexed into the City of Crouch and zoned Residential.

Section 4. The zoning map is hereby amended to reflect the

above-described real property as Residential.

Section 5. If any portion of this Ordinance is found to be unenforceable or unconstitutional for any reason, the remaining portion of this Ordinance shall remain in full force and effect.

Section 6. Any portions of any existing ordinances, which are in direct conflict with this Ordinance are hereby repealed insofar as the conflict exists.

Section 7. That this Ordinance shall take effect and be in full force from and after its passage, approval and publication.

EXHIBIT "A"

The following described real property, a parcel of land located in the SE1/4 of Section 16, T. 9 N., R. 4 E., B.M., Boise County, Idaho being more particularly described as follows:

Commencing at the east 1/4 corner of said Section 16, CPF Inst. 107453, corner records of said Boise County; Thence a bearing of S 0°26'10" E, a distance of 654.72 feet on the east boundary of said Section 16 to a 5/8 inch rebar being the northeast corner of the S1/2 of the NE1/4 of the SE1/4 of said Section 16; Thence a bearing of S 89°26'16" W, a distance of 1312.71 feet on the north boundary of said S1/2 of the NE1/4 of the SE1/4 of Section 16 to a 1/2 inch rebar being the northwest corner of said S1/2 of the NE1/4 of the SE1/4 of Section 16; Thence a bearing of S 0°13'54" E, a distance of 645.61 feet on the west boundary of said S1/2 of the NE1/4 of the SE1/4 of Section 16; Thence a bearing of S 28°18'02" W, a distance of 224.27 feet to the POINT OF BEGINNING.

Thence a bearing of N 35°50'44" E, a distance of 125.80 feet to a 5/8 inch rebar; Thence on a curve to the right, which curve has a length of 161.61 feet, a radius of 441.47 feet, and a chord which has a bearing of N 46°19'58" E, a distance of 160.71 feet to a 5/8 inch rebar; Thence a bearing of N 56°49'12" E, a distance of 143.38 feet to a 5/8 inch rebar; Thence on a curve to the left, which curve has a length of 120.02 feet, a radius of 246.13 feet, and a chord which has a bearing of N 42°51'11" E, a distance of 118.83 feet to a 5/8 inch rebar; Thence a bearing of N 28°53'03" E, a distance of 116.59 feet to a 5/8 inch rebar; Thence a bearing of N 89°26'16" E, a distance of 67.37 feet on said north boundary of said S1/2 of the NE1/4 of the SE1/4 of Section 16 to a 5/8 inch rebar on the right-of-way boundary of the Middle Fork Road; Thence a bearing of S 28°42'19" W a distance of

70.48 feet on a spiral chord of the right-of-way boundary of the Middle Fork Road to a 5/8 inch rebar; Thence a bearing of S 28°18'02" W, a distance of 597.15 feet on the right-of-way boundary of the Middle Fork Road to a 5/8 inch rebar; Thence a bearing of N 61°41'58" W, a distance of 224.27 feet to the POINT OF BEGINNING.

EXHIBIT "B"

The following described real property, a parcel of land located in the SE1/4 of Section 16, T. 9 N., R. 4 E., B.M., located in Boise County, Idaho and more particularly described as follows: Commencing at the east 1/4 corner of said Section 16, CPF Inst. 107453, corner records of said Boise County; Thence a bearing of S 0°26'10" E, a distance of 654.72 feet on the east boundary of said Section 16 to a 5/8 inch rebar being the northeast corner of the S1/2 of the NE1/4 of the SE1/4 of said Section 16; Thence a bearing of S 89°26'16" W, a distance of 1312.71 feet on the north boundary of said S1/2 of the NE1/4 of the SE1/4 of Section 16 to a 1/2 inch rebar being the northwest corner of said S1/2 of the NE1/4 of the SE1/4 of Section 16; Thence a bearing of S 0°13'54" E, a distance of 645.61 feet on the west boundary of said S1/2 of the NE1/4 of the SE1/4 of Section 16 to a 5/8 inch rebar; Thence a bearing of N 35°50'44" E, a distance of 42.45 feet to the TRUE POINT OF BEGINNING.

Thence a bearing of N 35°50'44" E, a distance of 168.02 feet to a 5/8 inch rebar; Thence a bearing of S 61°41'58" E, a distance of 224.27 feet to a 5/8 inch rebar on west right-of-way boundary of the Middle Fork Road; Thence a bearing of S 28°18'02" W, a distance of 267.66 feet on the right-of-way boundary of the Middle Fork Road to a 5/8 inch rebar; Thence a bearing of N 39°23'10" W, a distance of 266.27 feet to the POINT OF BEGINNING.

EXHIBIT "C"

The following described real property, a parcel of land located in the SE1/4 of Section 16, T. 9 N., R. 4 E., B.M., Boise County, Idaho being more particularly described as follows:

Commencing at the east 1/4 corner of said Section 16, CPF Inst. 107453, corner records of said Boise County; Thence a bearing of S 0°26'10" E, a distance of 654.72 feet on the east boundary of said Section 16 to a 5/8 inch rebar being the northeast corner of the S1/2 of the NE1/4 of the SE1/4 of said Section 16; Thence a bearing of S 89°26'16" W, a distance of 1312.71 feet on the north boundary of said S1/2 of the NE1/4 of the SE1/4 of Section 16 to a 1/2 inch rebar being the northwest corner of said S1/2 of the NE1/4 of the SE1/4 of Section 16; Thence a bearing of S 0°13'54" E, a distance of 645.61 feet on the west boundary of said S1/2 of the NE1/4 of the SE1/4 of Section 16 to a 5/8 inch rebar the TRUE POINT OF BEGINNING.

Thence a bearing of N 35°50'44" E, a distance of 42.45 feet to a 5/8 inch rebar; Thence a bearing of S 39°23'10" E, a distance of 266.27 feet to a 5/8 inch rebar on west right-of-way boundary of the Middle Fork Road; Thence a bearing of S 28°18'02" W, a distance of 272.28 feet on the right-of-way boundary of the Middle Fork Road to a

5/8 inch rebar on the north right-of-way boundary of the Banks Lowman Road; Thence a bearing of N 61°41'58" W, a distance of 71.79 feet on the north right-of-way boundary of the Banks Lowman Road to a 5/8 inch rebar; Thence a bearing of N 0°13'54" W, a distance of 334.63 feet on the west boundary of the SE1/4 of the SE1/4 of Section 16 to a 5/8 inch rebar; Thence a bearing of N 0°13'54" W, a distance of 42.45 feet on said west boundary of the SE1/4 of the SE1/4 and said west boundary of the S1/2 of the NE1/4 of the SE1/4 of Section 16 to the POINT OF BEGINNING.

Janet Juroch, Crouch City Clerk

Published in the Idaho World January 2/19/2020



BOISE COUNTY BOARD OF COMMISSIONERS CONDENSED MINUTES TUESDAY, FEBRUARY 4th, 2020-Miners Exchange Building, Idaho City, Idaho, 83631

Chairman Ward called the meeting to order and the pledge of allegiance was recited. Present: Chairman Ward, Commissioner Stirn, Clerk Prisco, Deputy Clerk Coffelt, Prosecutor Strong, Assessor Juszcak, Solid Waste/Noxious Weeds Superintendent Rekow, Sheriff Kaczmarek, Community Justice Administrator Leader, Human Resources/Court Supervisor Schiffer. Absent: Commissioner Jackson. Minutes for January 28th, 2020 were approved. Ms. Leader updated the Board on some budget issues in her department. Out of state travel was approved for Ms. Schiffer. An update on Elections was given to the Board by the Clerk. A purchase request was approved for Mr. Showalter. An addition to the Solid Waste Fee Resolution was discussed. The legal boundaries for the county was addressed for the census. A payroll addition for the Solid Waste department was approved. The Sheriff updated the Board on an impromptu meeting with Avimor. Clerk Prisco discussed property tax related legislation that will have a negative impact on our small county. A MOU between BC and the Idaho Department of Health & Welfare was approved. A portal access agreement with the Department of Health & Welfare was approved. A support letter for forest health projects in Boise County was sent to the Forest Service. A tax Cancellation request was approved. One demand warrant was approved. Commissioner discussion & committee reports were discussed. Future agendas were reviewed & discussed. Adjourned. Approval, Chairman Ward. Attest, Clerk Prisco, Clerk to the Board.

Published in the Idaho World on February 19, 2020.

Idaho Property Tax Reduction Program (Circuit Breaker) And Disabled Veterans Property Tax Benefit
 It's nearing the time to submit this year's application for the PROPERTY TAX REDUCTION Program (CIRCUIT BREAKER Program)
 Offers tax reduction on your primary residence and up to one acre of land for people that meet certain qualifications
DEADLINE TO FILE - APRIL 15, 2020
 HORSESHOE BEND March 17, 2020 - HSB Senior Center
 GARDEN VALLEY March 24, 2020 - GV Library
 (HOURS at each location are 10am to 2pm)
 If you have a completed application, questions, or need assistance in filling out your application, please stop by a workshop and we will be glad to help.
 We will also be happy to send you an application form if you are unable to come into the office or attend a workshop just give us a call! 208-392-4415

Obituaries are a free service to Boise County residents, as part of the Idaho World's commitment to the community.

BOISE COUNTY

Idaho City Chili Cook-off Fires Up the Town

~ continued from page 1

SRO Dave Gomez, and State Representative Dorothy Moon.

“Matthew and the Hope” was a highly entertaining band that played for eight hours on Saturday, between the event on the Mercantile boardwalk and later at *The Gold Mine* that night.

Sponsors: Habenero level - Idaho Power, New View Real Estate, Silvercreek Realty Group.

Serrano level - BoCo Sanitation,

Jalapeño level - Gold Mine Saloon and Grill & *The Idaho World*

Volunteer awards went to: students - Kaitlynn Barber and

Maddie Osborne. Thanks goes to Bri Burke, who made the most impact on the success of the event on that day.

Collector’s ceramic chili cups were in high demand and had sold out a week prior to the event on Saturday, February 15th. Jameson said there were 500 ceramic cups, and 600 cups sold the day of the event. They added a hundred more commemorative cups this year, and are expecting to increase that number once again next year, raising it by two-hundred ceramic cups. She would like to encourage more contestants to participate in the chili cook-off and join in the fun in 2021!



3rd place - Chili Chili Bang Bang with Art Burget, JR Wallsworth, George Jeffes - 10th year contestants.



2nd place - Preston’s Boulder Creek Chili, returning contestant, Earl Preston.

Photos by Eileen Capson

GV Wolverines Win Twice Over HSB Mustangs

By Jennifer Haney

GARDEN VALLEY -- On Friday, February 14, the Garden Valley Wolverines and the Horseshoe Bend Mustangs faced off for their final regular game of the season. The Junior Varsity (JV) team played first. The Wolverines came out ferociously and the Mustangs were not quite fast enough to escape those claws. By the end of the 1st period, the Wolverines were ahead with a score of 21 to the Mustang's 5, with the Wolverines having 3 fouls to the Mustang's 1. The Mustangs fought back valiantly but were unable to catch up. The final score: Garden Valley 75, Horseshoe Bend 21.

The Varsity game began following the JV game and the senior salute. #15 Caleb Van Dyk (Sr) scored the first basket of the game, followed quickly by Horseshoe Bends #5 Logyn Bromgard (Jr). The game only got hotter from there with back-to-back baskets as both teams charged. By the end of the first quarter, it was the Garden Valley Wolverines 16 to the Horseshoe Bend Mustangs 13. The Mustangs kept up their speed throughout the second period, but the Wolverines began to pull away. By the break at the end of the second quarter the Mustangs were down by 18 points. After the break, the Wolverines came out of their den like hungry predators. They dominated the Mustangs the third quarter and were on top by 38 points. By the fourth quarter the stress of the game was evident on both teams. The Mustangs held the Wolverines to 8 more points, but only answered with 2 more themselves. The Wolverines won the game with a final score of Wolverines' 84 to the Mustangs' 41.



HB # 25 Austin Fry (Sr) grimaces while GV #25 Conagher Cox (Sr) and GV #15 Caleb Van Dyk (Sr) celebrate as Garden Valley secures the win.

Photos by Jennifer Haney



#15 Caleb Van Dyk goes in for a lay up.



Liliana LaFleur, a 4th grader at Garden Valley, takes a shot for \$1 to support Honor Society during a break in the game.

Subscribe Now & Save!

Yearly Rates For Delivery To:

- Boise County: \$30.00
- Treasure Valley: \$45.00
- (Zip Codes 837XX, 836XX (outside Boise County), and 979XX)
- Other U.S.A.: \$50.00
- Subscribe Online: idahoworld.com

YES! Enter My Subscription Information:

My Check Is Enclosed. Gift New Renewal

Name _____

Address _____

City _____ State _____ Zip _____

Email _____

1A Long Pin Conference Standings

Team	Overall	Conference	National Rank	State Rank
Garden Valley	15-3	9-1	3506	19
Cascade	15-2	9-1	4438	32

THE IDAHO WORLD

P O Box 220; Idaho City, ID 83631