



THE IDAHO WORLD

“The Noblest Motive Is The Public Good”

Vol. 154, No. 46

Wednesday, August 16, 2017

Idaho's Oldest Newspaper
Established 1863

THE VOICE OF BOISE COUNTY

Preparing for the Eclipse, pg 4; Special Eclipse Postmark, pg 5; CuMo Annual Event, pg 12

THE ECLIPSE IS COMING

Will the County Be Prepared for Emergencies?

BOISE COUNTY -- Sheriff Jim Kaczmarek advised the public that “the Boise County Sheriff’s Office has been working closely with Boise County Emergency Management, local fire departments, the State Police, ITD, local EMS and neighboring agencies as well as the communities within Boise County, all in an effort to minimize the impact of the potential influx of people coming into Boise County.”

“The major threats identified are gridlock on the limited road systems in Boise County that would limit the response of emergency

personnel throughout the county. The Boise County Sheriff’s Office has planned accordingly with all of the above listed agencies by placing critical resources such as fire, EMS and law enforcement throughout the county strategically to minimize the amount of time and miles they would have to travel to different incidences.”

Boise County’s Emergency Manager, Bob Showalter, had this to add: “We looked at our road infrastructure having two main, two lane highways, and concluded that with the expected number of people, traffic would

be a concern. If the roads are congested with traffic it will be difficult for Emergency Medical Services, Police and Fire Departments to respond to emergencies. *Another concern is fire.* We are in Stage 1 Fire Restrictions, so campers outside of official campgrounds should not have a campfire. However, motorist with hot cars pulling off into high dry grass, or cigarette butts, could ignite a fire.” Showalter said, if need be, there are plans to include the use of ATVs and motorcycles to reach emergencies in heavy traffic. “Saint Luke’s and Saint Alphonsus will be ready with staff and helicopters for medical evacuations. The U.S. Forest Service, State Police, Idaho Transportation Department, Emergency Services and the Boise County Sheriff’s Office will be fully staffed for law enforcement and public safety. Our Emergency Operations Center will be open throughout the weekend and into Monday to help

with coordination and communication for whatever may come up.” Although there have been countless meetings with different agencies and members of the community, he found that “no one really knows what to expect here in Idaho, so we thought it’s best to issue the Emergency Disaster Declaration” should the county need State assistance, “the paperwork is already signed.”

Brant Petersen, District Ranger for the Boise National Forest, explained, “We have been preparing for this upcoming Eclipse weekend for months. We have additional staff working out in the field Saturday – Monday and our office is staffed and open through the weekend. Our biggest challenge is the fact that we have a large-scale Pioneer Wildfire Restoration effort taking place concurrently. The Pioneer Restoration effort involves salvage logging, road and trail infrastructure repair work. For

the safety of our employees, contractors and especially our public areas where logging or road/trail repair is taking place are currently closed. I strongly encourage our recreating public to look on the Boise National Forest website or stop in at the office to check to be sure the area they are planning to go is open. With the anticipated crowds please plan for the unexpected and come prepare with extra supplies.”

Bob Showalter concluded, “The seven-day forecast is showing some light clouds on the day of the eclipse so weather will be a big factor as we get closer. If more clouds are expected people may travel to clearer skies reducing the influx of people into Boise County. A lot of planning has gone into this event by agencies, businesses and citizens of the county so hopefully we have a good turnout with an awesome eclipse and no big issue. *Time will tell.*”

HAPPENINGS

Horseshoe Bend - HSB Senior Center Lunch & Bingo-Friday, August 18 & Tuesday August 22. 12:15 p.m. Horseshoe Bend Senior Center, 109 S. Riverside Dr., HSB. (208) 793-2344 \$5.00 for senior lunch

Garden Valley - Mountain Mixer Dinner & Auction is Saturday, August 19th at Weilmunster Park. Dinner at 5:00 pm, consisting of Tri-Tip, chicken quarters, baked beans, baked potatoes and corn on the cob. There will be a live auction, games, raffles and a chance to win a big screen TV. One of the highlights is a there will be an African Safari trip to be auctioned off!

Garden Valley - Duke Days Rodeo on Saturday, August 19th at GV Areana, at 6PM. In honor of The Duke, from the movie McClintock, events include: Wild Cow Milking, Head to Head Cow Riding, an Egg Race and MORE! GV/Youren Arena - Come see a one of a kind Old West Rodeo! This is wild, crazy and full of whiskey giveaways. TICKET: \$7.00

**** COUNTY ECLIPSE HAPPENINGS ON PAGE 3 ****

Idaho City - Boise Basin Senior Center's Health & Beauty Fair on Tuesday, August 29th from 1 – 3 pm.

Idaho City - Come see classic cars lining the streets! The Idaho City Cruise is on Saturday, Sept 2nd.

Idaho City - Saturday, September 9, 10 am - 4 pm, Closer to Heaven - Tour of Mountain Homes, a fundraiser to benefit The Isaiah Foundation's Mountain Kids Day Camp. Presale tickets \$10 each, available at Idaho City Visitor Center or online at www.mountain-hometour.com ; or \$15 on day of event at Idaho City Senior Center - cash/checks only. Visit 8 interesting unique private homes and 2 historic buildings and help Idaho City kids attend camp free.

Garden Valley – Garden Valley Center for the Arts is putting out an early call out for art from Idahoans for our “Art in the Mountains” in September. All Mediums. Call 462-6860 for more information or message them on Facebook.

NOTE: The Happenings section covers events in Boise County

Horseshoe Bend Anticipating High Traffic for Eclipse

Written by Janet Juroch
HORSESHOE BEND – The most anticipated event of the summer closed in on August 21 with the Solar Eclipse of 2017. All county towns are gearing up for many visitors and even people are coming from other countries who are “eclipse chasers.”

Horseshoe Bend faces its own challenges. While camping and hotels are virtually non-existent in the area, there is a major north and south Highway running through the town which will funnel traffic to Garden Valley, Stanley, Placerville and beyond to points north in Valley county as well.

Horseshoe Bend Fire Chief Nathan Howell is preparing the fire station and his sixteen volunteers to be ready, particularly in the event of fires. He admits that the traffic tie ups will push the limits of what they can do, depending on the location of

the fires. Howell says, “I am parking my camper by the station for several days around the eclipse.” He will be able to take walk-ins that need assistance or be ready for other emergencies. With a sub-station annex at Gardena, the fire department can quickly have responders be ready from that location.

“I wanted to get some paramedics on board but those in Boise are tapped out and we are not able to pay enough to get commitments from any. So it will be all hands on deck to help out,” says Howell. He admits that the unknown for such an event makes planning very difficult. Howell indicated that in case of a massive problem, there will be shelters arranged

at the school and the LDS Church.

Judith Hutton will be in charge of the Horseshoe Bend EMS and also states, “Most of the issues with Horseshoe Bend will be traffic accidents.” She sees that as the biggest problem they will have to respond to. “This is where the traffic will flow to all the other places that have a longer viewing with camping and hotels.”

The discussion lead to the fact that going home after the eclipse is where there will be the biggest traffic congestion though the town. Everyone is preparing for the virtually unknown, except that there will be massive traffic on limited roads throughout the county.

The Boise County Board of Commissioners, during open session on August 15th, 2017, made the decision to keep the County Offices open on August 21st, but with limited coverage in each office. If you are wanting to do any business that day, we suggest you call first.

Get A Better Deal On A Subscription!
Your Name Would Be Here & Delivered To Your Address Every Week.
Check The Back Page To Subscribe.

WEST BOISE COUNTY

City of Crouch Struggles with Water Service Decisions

Written by Janet Juroch

CROUCH -- Water is the main topic at the Crouch City Council meeting of August 9th, 2017. The City of Crouch has to tackle decisions on water system expansion. The system has backbone components needed for a water system, but it is incomplete and not supporting itself. The residents of Crouch need to become educated in how to proceed with the city's water project. This system would also involve the businesses and residents within the City limits.

Mike Woodworth of Mountain Waterworks presented his findings of what it would take for the City to complete the water system. The main items include, additional water mains to extend, the system, service lines to connect customers, hydrants to provide fire protection, increased well pumping capacity and a second well to comply with pub-

lic drinking water rules.

Questions arise about water rates. Studies were done to find what was sustainable for the customers. Woodworth gave an estimate cost per customer based on similar communities, the median income level and estimated water usage in Crouch. A typical resident rate structure may be approximately \$40.

No one will be forced to hook up to the system. The plan is to educate residents about the water issues and how the system would work so that people can make well informed decisions. This would be in the form of a public information meeting.

"Crouch needs to generate enough revenue and add customers to the system to pay for capital costs, maintenance, operation of the system and have a little extra for the cost of future repairs," according to Woodworth and showed four

alternatives to be considered. The alternatives will consider EDUs (An EDU is short for either Equivalent Dwelling Unit or Equivalent Domestic Unit and is a measurement based on a dwelling usage).

Alternative 1 has upgrades required to provide service up to 25 EDUs. The downside is with a small customer base, the rates would be very high to maintain the system. The advantage is fire protection to the city core and limited city investment.

Alternative 2 upgrades required provides service to approximately 115 EDUs. It would have the advantages of Alternative 1. The larger customer base would keep rates at a moderate level. There would be an increase in operational cost because there would be a second well. A bond is required to receive a block grant and that would be voted on by city residents. (This **will not** affect residents outside the city limits.)

Alternative 3 is a regionalize system but is very expensive and not a viable solution.

Alternative 4 is for the City of Crouch to take no action and continue as is. In the long run this would be the highest long term cost and could impact the community negatively in the future.

The Crouch City Council members need to make some decisions on this since they own and operate a water system. Based on the findings Mike Woodworth proposed, the city needs additional customers to produce income that could sustain the system into the future. The residents in the City of Crouch will need to be involved in the process, especially if there is a bond election.

HSB Senior Center

By Tracy Koslosky -- Horseshoe Bend Senior Center, located at 109 S. Riverside Drive, serves up hot, tasty meals with a side of bingo every Tuesday and Friday. It is a great place to meet fellow Horseshoe Bend residents, share a meal and possibly go home with some spare change in your pocket. Lunch is served at 12:15 and everyone in the community is welcome. Seniors 60 years of age and older pay just \$5.00 for meals, while those under 60 can expect to pay \$6.00. A rousing game of bingo follows the lunch service. Players can buy in for a quarter donation per card/round. Half of the taking helps to pay for the center's janitorial services while the other half goes home with the lucky winners. Those without transportation can arrange to be picked up in the centers bus by volunteer driver, Tracy Bay. Seniors who can't make it to the center can also have meals delivered to them. Diners with certain

dietary restrictions can be accommodated with advance notice to the center. 3-4 volunteers are needed during meal service to help serve and greet community members.

The facility (kitchen, main dining area, bathroom) is also available to rent for gatherings. Volunteers are needed for a variety of services and the center could use donations of magazines to fill its large rack at the entrance. For information on volunteering, donating, transportation, meal delivery, or facility rental you can call (208) 793-2344.

August's menu: Friday 8/18-Chicken fried steak, mashed potatoes with gravy, apricots, salad, and bread

Tuesday 8/22-Ham and scalloped potatoes, Pork and beans, rolls, cantaloupe, and salad

Friday 8/25-Clam chowder, sourdough rolls, carrots, and apples

Tuesday 8/29-Biscuits and sausage gravy, scrambled eggs, hash browns, and mangoes



HSB Senior Center (above) main dining room.

Senior Center volunteer greeter, Norma Flannery (right).

Photos by Tracy Koslosky



GARDEN VALLEY SENIOR & SOCIAL CENTER NEWS

By Sheila Schoettger

When friends told me that they've enjoyed these Senior Center columns, I was, frankly, relieved. But, can you imagine how I felt when others told me that, in anticipation of the August 23rd column, the skies are going to darken, the sun is going to briefly disappear and then the skies are going to lighten again. WOW! I had no idea. Must be the power of the pencil!

News from Granny's: With tree leaves starting to fall (at least in my yard), the start of the Idaho hunting season must be nearing. If the website I accessed is correct, August 30th is opening day. If you want to impress your fellow hunters, be sure to drop by Granny's this weekend where you'll find an impressive collection of camouflage clothing and some gear.

And for men, women and teenagers who wear jeans - Granny's has lots of jeans. Granny's has jeans which range in condition from new, never worn to really relaxed and Granny's has jeans in sizes which range from extra-large down to petite sixes. All pants are priced at \$2.50.

Peddle-pushers* are \$2.00 and Bermudas are \$1.50. (*I know, I know, there is a more modern name for calf-length pants but I just can't remember it. Must be the birthday I had earlier this month?!)

News from the Center: The Center Board is pretty good at privately thanking Garden Valley/Crouch businesses and residents for helping us do our work serving the community. We think, however, that we're not so good at letting the community know about the generosity of these folks.

We want our August Salute to go to the Garden Valley Market. It's great to have such supportive friends.

FYI: The August 29th Dinner has been cancelled. We'll miss dining with you.

Take care.
Enjoy the Eclipse!

SPNW

Horseshoe Bend
Family Dental



Excellent care
for the entire family

Call today
208-888-4286
HSBDental.com



Terrace Lakes

RESORT

101 Holiday Drive, Garden Valley, ID 83722
Office: 462-3250 • Pro Shop: 462-3314

Office
Open Daily
8am - 5pm

Restaurant
Sun. - Thurs.
7am - 9pm
Fri. & Sat.
7am - 10pm

Lounge
Mon. - Fri.
12pm - Close
Sat. - Sun.
10am - Close

Terrace Lakes Tuesdays at the hot springs pool. Come and enjoy our pool on Tuesdays for only \$5.00 for everyone (3 and under are free).

Memberships for \$500.00—call the office for information

2017 Solar Eclipse—We will have camping spots available (swim passes included) along with live music, food vendors and a whole lot of fun. Call the Lodge at 208-462-3250 for information and prices.

Prime Rib every Friday and Saturday Night

Dinner Specials every Sunday for \$7.95
Come visit the Wine Room for specials and buy the special bottle for your dinner.

We are located 3 miles north of Crouch up the Middle Fork Road off Warm Springs Road.

Hot Springs Pool
Open Daily
10am - 10pm
Open to the Public

Golf Shop
Open Daily
7am - 8pm

EAST BOISE COUNTY

EXPERIENCE THE ECLIPSE IN IDAHO CITY

IDAHO CITY -- Looking for a good place to enjoy the solar eclipse? Look no further, your answer lies in Idaho City! Phoenix Hobbs, an Idaho City High School student, has organized an Eclipse Festival on August 21st, to benefit the Idaho Center for Outdoor Education (ICOE). As part of her senior project, she has put together a fun event geared towards families and the study of science. Parking will be \$10 at the high school and football field, but there is no cost to get into the event. The Festival begins at 9am, with parking opening at 8:30am. Enjoy food, live music and the totality of the eclipse in Idaho City at 11:27am.

Phoenix has had a lot of support from the school, including the football players, which are going to be helping out with the parking. Cheer leaders and volleyball girls will be assisting at the football field with the main events happening there. The Idaho STEM Action Center will also be there to support the event, with a booth for children focused on learning and science.

Join in on a hike up to the

top of the mountain, at the ICOE grounds, for a better view of the solar eclipse. Wear good shoes and expect a 10 to 15-minute hike up to the top.

Get your souvenir solar glasses for \$1 and \$15 for a t-shirt. Seasons will be selling hamburgers, hotdogs, pop and water. The Sarsaparilla will likely be selling cotton candy, veggie wraps and ice cream. Porta poties are available at the football field.

Phoenix has met with the Boise County Commissioners, the Emergency Manager and Sheriff on several occasions while developing her plan for the festival. "Even though this is a huge project, I'm glad I did it, because it's gotten me more involved in the community and I can talk to people better than I used to. I know a lot more local people and it just forced me to get involved in the community. I'm really grateful for that as well."

As part of the Idaho Center for Outdoor Education Committee for the Basin School District, Phoenix explained with some humor, "This is my senior project. I am a junior, but decided to do my senior project early and

you can't really switch the date of the eclipse, so I kind of had to do it early!"

All the proceeds will go towards the Outdoor Education Center, gathering funds for an observatory, and to have more activities on the forest land recently purchased by the school district. Phoenix would like to see the proceeds go towards the arts, partially due to her love for music and art. "Usually when it comes to school, sports take top priority. In the end, I wanted my senior project to raise awareness for both outdoor education and the arts."

Excited for the prospects, Phoenix added, "I want to make it big! I want to make it fun! I want to give everyone the opportunity to see it in a place with a science-y and festival atmosphere."

Bring your folding chairs and enjoy this incredible eclipse from Idaho City!

- Idaho City Eclipse Times:**
 -Start of partial eclipse: 10:11am
 -Start of total eclipse: 11:27am
 -Maximum eclipse: 11:27am
 -End of total eclipse: 11:28am
 -End of partial eclipse: 12:50pm

Eclipse Happenings:

Placerville: Saturday, August 19th Hot August Nights: Boise Basin Boosters are having Hot August Nights on Saturday, August 19th at the Placerville Plaza. Roast pig, a Dutch Oven cook-off. It is also Back to School Night and Boosters will be accepting donations for school supplies for the Idaho City schools.

Sunday, August 20th at 7:00 PM Booster will serve hotdogs and snowcones for \$1 each at the Placerville Plaza. Sponsored by Donna's Place, Ed Cain and George Jelinek will provide 50s and 60s rock and roll for listening or dancing.

Monday, August 21st from 8-11 AM Placerville Fire Auxiliary will serve pancakes for \$1 a pancake at the Placerville Plaza. Eat your fill before the eclipse!

Garden Valley School- August 21 all day. View sites for the eclipse; \$20/car or \$5 per person. Food and beverage fundraisers for those staying for the eclipse. There will be a speaker walking everyone through the eclipse. Solar Glasses for sale.

Sweet - Solar Eclipse Breakfast on August 21st, from 7am to Noon, at the Syringa Hall (built in 1899) in Sweet, Idaho. Pancakes, sausage, eggs, \$7. Breakfast Burritos to go only \$5. Limited \$2 eclipse glasses. Money raised goes to "Save the Syringa Hall". Donations are tax deductible.

Idaho City - Head to the football field; events start at 8AM. Activities will include games, face painting, and live music. Choose whether to join in a hike up to the top of IC Outdoor Education hill for a better viewing spot. Sponsored by many local business, who will be vendors at the event. T-shirts and solar glasses for sale. All proceeds will go to the ICOE, as part of the Idaho City High School property, for future projects like an observatory. No sign up necessary, just \$5 dollar parking fee (football field and high school parking lot).

Idaho City - Little League's paid parking at the ball park for the eclipse. This is a non-alcohol event. Support the maintenance of the ball park.

"A total eclipse of the Sun is simply the most beautiful, stunning and awe-inspiring astronomical event you can see with the naked eye — but you've got to be in the 70-mile-wide path of totality,"

~ Fred Espenak, retired NASA astrophysicist and photographer of the "Total Eclipse" commemorative postal stamp.

THORN CREEK VOLUNTEER FIRE DEPT. FUNDRAISER



Serving up hotdogs & hamburgers on August 12th, which included: Live music, an auction, and raffle. Photos by Eileen Capson



Eddie Cain (middle) with the Payette River Boys

THE IDAHO WORLD

"The Voice of Boise County"

Idaho's Oldest Newspaper
Established September 29, 1863

Published weekly by:

Idaho World Publishing, LLC
P.O. Box 220; Idaho City, ID 83631

Eileen Capson - Editor-in-Chief
editor@idahoworld.com
(208) 342-3399

Send articles & legals to:
editor@idahoworld.com

Correspondents:

Tracy Koslosky - Horseshoe Bend
tracy@idahoworld.com, 793-2834
Janet Juroch - Garden Valley
janet@idahoworld.com, 462-4557
Eileen Capson - Idaho City
eileen@idahoworld.com; 342-3399

The opinions expressed in paid advertisements and in articles do not necessarily represent the views of this newspaper or of its staff.

USPS (256-120) - PERIODICAL Postage paid at Idaho City, Idaho, and at additional mailing offices under the Act of March 3, 1879. Annual subscriptions are \$30 for delivery within Boise County, \$45 for delivery to addresses with zip codes starting with 836, 837 or 979, and \$50 to other U.S. addresses. POSTMASTER: Send address changes to - The Idaho World; PO Box 220; Idaho City, ID 83631

BOISE COUNTY

U.S. Forest Service Prepares for the Solar Eclipse

BOISE COUNTY -- The Boise and Sawtooth National Forests are preparing for the solar eclipse. With the projected increase of visitors, there are special considerations requiring additional attention from all Forest users during this time, please visit: <https://www.fs.usda.gov/main/boise/home>

Some areas within the path of totality are closed. Below are some of the specific closure areas. Recreationists are highly encouraged to “know before you go” by visiting the Boise National Forest alerts and notices page where all current

closures are posted: <https://www.fs.usda.gov/alerts/boise/alerts-notice>

- Bear Valley Creek areas will be closed for the protection of threatened and endangered species and for public health and safety. This area north of Lowman, Idaho, hosts adult salmon completing their spawning migration (almost 900 miles). This area is very sensitive and we ask our visitors to help us protect this valuable resource.

- National Forest Systems (NFS) Road 555 (Scott Mountain Road) will be designated one-way traffic at different times

of the day for public safety Aug. 18-21, 2017. Northbound traffic is open from 6 a.m. - 1 p.m. Southbound traffic is open from 1—7 p.m. Two-way traffic is open to 7 p.m.—6 a.m.

- Snowbank Mountain area has limited occupancy capacity and will be monitored. Once capacity has been reached, NFS Road 446 gate will be closed to further incoming traffic for public health and safety. If you plan on viewing the eclipse from this delicate area, please help protect it by adhering to the posted motor vehicle boundaries (300 feet from designated roads).

- Salvage logging and Forest road repair work has begun in areas burned by the 2016 Pioneer Fire. Forest visitors traveling on State Highways 55, State Highway 21, Boise County Road 17 (Banks Lowman Highway) and adjacent NFS roads within the Lowman and Idaho City Ranger Districts should drive with caution as there is an increase of logging truck activity. Safety is always important, especially while traveling in burned areas as there is a higher degree of hazards. Many immediate threat hazard trees have been removed along

priority roads and travel routes however, fire weakened trees have potential to fall; obstructing roadways and camp sites. Forest recreationists are encouraged to critically evaluate parking areas and camping locations.

- Be bear aware. During dry summer months, bear's natural food may be scarce, attracting them to improperly stored food sources. For additional safety information, please visit: <https://www.fs.fed.us/visit/know-before-you-go/bears>

Eclipse Preparedness for Residents & Businesses

BOISE COUNTY -- On August 21, 2017, Idaho will experience its first total solar eclipse in 38 years. You are receiving this because your community or region is in or near the “path of totality” -- a 60-70 mile wide band where the moon will completely eclipse the sun -- which means you will have some of the best views of the eclipse in the nation.

Due to the rarity of this event and the proximity of prime view locations being within drivable distance of so many people, your area is expected to see a large influx of visitors from

August 17–22. We recommend communities within the path taking precautions in advance of the potential crowds.

Please use the following information to help residents and businesses in your community prepare for the possible influx of visitors to your area.

Readiness Tips for Residents:

- Stock up on food items, necessities and errands, including water, groceries, prescriptions, gas, etc., in advance of August

21.

- Have proper eclipse eyewear to avoid permanent eye injury while looking at the eclipse.

- If you are renting out space or allowing visitors to park or stay on your property for the eclipse, please check with your local city ordinances to ensure you are in compliance with local laws and guidelines, and the Idaho Tax Commission regarding monetary collections.

- Depending on your location and property, consider posting NO PARKING or PRIVATE PROPERTY signage.

- Plan for longer commute times, specifically on main or arterial roads.

- Help keep roads clear by limiting your trips. Staying off the roads helps make sure emergency service vehicles can get through.

- Visit 511.idaho.gov for real time highway reader board updates, such as accidents, lane closures, and fires. You can also sign up for news releases for accidents and other incidents at isp.idaho.gov.

- Remember that this is peak wildfire season in Idaho. Residents and visitors should stay on pavement and avoid dry brush.

- Be willing to help where you can. People from around the world will be visiting Idaho for the first time. Show them why our beautiful state is so amazing!

- Many cities and towns are planning eclipse events. Contact your local city planners to see what's happening and get involved.

Readiness Tips for Businesses:

- Ensure you have adequate staff, maintenance supplies, and products to smoothly manage increased business traffic

especially during August 17-22.

- Be prepared for more cash transactions and backup tills as credit card processing times may increase.

- Encourage employees to fill up their gas tanks in advance.

- Talk to your suppliers to coordinate delivery schedules around the days leading up to and during the eclipse to ensure you are adequately supplied and the trucks can avoid roadways during peak eclipse traffic.

- If you are serving or preparing food at an eclipse related event, make sure you have cleared all temporary food license or exemption form requirements. Contact your local public health office for more information.

- Be aware of current camp fire restrictions and road conditions in your area, and consider sharing and posting fire prevention tips and materials in your business. Additional education materials could protect Idaho lands during visits from out-of-town campers not aware of restrictions and necessary fire prevention.

- Consider posting local emergency contact information in addition to 9-1-1.

Selling or Renting Out During the Solar Eclipse?

BOISE COUNTY -- Aug. 11, 2017 — The August 21 solar eclipse is fast approaching, and the Idaho State Tax Commission is seeing online ads and roadside signs offering Idaho eclipse visitors rooms and homes to rent for lodging or spots to rent for overnight camping. Idahoans who rent out their properties for these activities may not know they need to collect the Idaho sales and lodging taxes that apply, even if it's for only one day.

The Tax Commission also expects to see people making extra money by selling souvenirs, food, and other items to eclipse visitors. These first-time sellers may not realize they need to collect and remit Idaho sales tax even if they're selling for only one day.

In addition, those selling and renting out may also need to collect a local sales tax charged by some resort cities and auditorium districts.

Here are some examples of

when taxes apply:

Selling food, T-shirts, souvenirs, etc.: **You must collect Idaho sales tax.**

Renting out your home, vacation home, cabin, trailer, a room in your home, etc., for temporary lodging: You'll need to collect Idaho sales tax, the travel and convention (lodging) tax, and any other local sales tax that applies, including the Greater Boise Auditorium District tax (for rentals within the district).

Renting out your yard, driveway, parking lot, or other space for overnight camping: You'll need to collect Idaho sales tax, the travel and convention (lodging) tax, and any other local sales tax that may apply.

How to register to collect and remit taxes:

You can apply online through tax.idaho.gov to get permits for the Idaho sales tax, travel and convention tax, and Greater Boise Auditorium District tax:

If you're only selling or



Photo courtesy source (also on page 1): http://www.zam.fme.vutbr.cz/~druck/eclipse/ecl2008r/Tse2008_tsa102_1/Hr/Tse2008_tsa102_1.png

renting out during a one-time event or a few times a year, you can use one application to easily apply for temporary permits.

If you have ongoing sales or rentals, you'll need to register for regular permits.

To register to collect other local sales taxes, contact the local taxing authority.

Visit tax.idaho.gov/eclipse for more information and to download an eclipse flyer, or call the Tax Commission at (208) 334-7660 in the Boise area or toll-free at (800) 972-7660.



Moon rising over Boise County.

Photo by E. Capson

BOISE COUNTY

Idaho City Post Office to Offer Special Postmark *GREAT COLLECTIBLE! Commemorating Total Solar Eclipse*



IDAHO CITY -- The Idaho City Post Office will offer a Special Postmark commemorating the upcoming Solar Eclipse. The Special Postmark and Solar Eclipse Forever Stamps will be available Aug. 21, at the Idaho City Post Office at 3860 Hwy 21, Idaho City, ID 83631.

Any item bearing current First-Class postage stamps will be postmarked at no charge, said Idaho City Postmaster Michelle

Audette.

"We encourage all those in the community to come out and buy a sheet of the Total Eclipse of the Sun Forever Stamps and receive the Special Postmark," said Audette. "The special postmark when combined with the Stamp will make for a great collectible."

The Total Eclipse of the Sun Stamp was issued June 20, 2017, and is a one-of-a-kind Forever Stamp which transforms

the solar eclipse image into the Moon from the heat of a finger. Once cooled, the image reverts back to the eclipse. The stamps are sold in panes of 16 Forever Stamps and are available now at Post Offices nationwide and online at usps.com/shop.

"With the release of these amazing stamps using thermochromic ink, we've provided an opportunity for people to experience their own personal solar eclipse every time they touch the stamps," said Audette.

Thermochromic inks are vulnerable to UV light and should be kept out of direct sunlight as much as possible to preserve this special effect. To help ensure longevity, the Postal Service is offering a special protective sleeve to hold and protect the stamp pane for a nominal fee. The back of the

stamp pane provides a map of the August 21 eclipse path and times it may appear in some locations.

A total eclipse of the Sun occurs when the Moon completely blocks the visible solar disk from view, casting a shadow on Earth. Fortunately, the Idaho City area is in the 70-mile-wide shadow path of the eclipse, known as the "path of totality," which will traverse the country diagonally, appearing first in Oregon (mid-morning local time) and exiting some 2,500 miles east off the coast of South Carolina (mid-afternoon local time) passing through portions of 14 states.

This stamp image is a photograph taken by retired NASA astrophysicist Fred Espenak of Portal, AZ, who is considered by many to be the world's leading authority on total solar eclipses with 27 under his belt. The photograph shows a total solar eclipse seen from Jalu, Libya, on March 29, 2006.



"Total Eclipse of the Sun Forever Stamps" are available for a limited time. Receive the "special postmark" on August 21st in Idaho City.

Courtesy of the USPS

"A total eclipse of the Sun is simply the most beautiful, stunning and awe-inspiring astronomical event you can see with the naked eye — but you've got to be in the 70-mile-wide path of totality," said Espenak.

"The Postal Service printed 60 million of these stamps and once they're sold, that's it," said Audette. "We're not going to produce any more." The Idaho City Post Office currently has approx. 30 sheets left.

Local Independent Insurance Agent for Idaho City

A one-stop-shop for your medicare options

"I am a Local independent insurance agent that can represent many insurance companies."

- New to Medicare and feeling overwhelmed?
- Not sure which plan is right for you?
- Do you even need Medicare or can you keep what you have now?

We can answer these questions and many more **at no cost to you.** Call today for your free consultation and sleep better tonight.

Two locations Boise and Idaho City

Call for a **FREE CONSULTATION** to see which plan is *right for you!*

208-350-9933



CarrieAnne Kowalczyk
carrieanne@ptibidaho.com



Personal Touch Insurance & Benefits

POSTALANNEX⁺



2 Locations to Serve Boise County Residents!

**PostalAnnex+
Fred Meyer/Home Depot
Shopping Center
on Federal Way**
3527 S Federal Way, Ste 103
Boise, ID 83705
208-384-0777
pa435@postalannex.com

PostalAnnex+ in Eagle
2976 E State St, Ste 120
Eagle, ID 83616
208-938-2860
pa3038@postalannex.com

Other Services: Copying, Printing, Notary, Mailbox Rental, Packaging Faxing, Greeting Cards, Special Printing, & Much More!

\$5 OFF Shipping
UPS, FedEx or DHL

Shipments of \$10 or More

Coupon Code # 5OFF10

Valid at participating PostalAnnex+ locations. Not valid with any other coupon or discount. Additional restrictions may apply. Each PostalAnnex+ location is independently owned and operated. ©2017 Annex Brands, Inc.

5¢ B&W Copies

25¢ Color Copies

Any Quantity

Coupon Code # 5OFF10

Valid at participating PostalAnnex+ locations. Not valid with any other coupon or discount. Additional restrictions may apply. Each PostalAnnex+ location is independently owned and operated. ©2017 Annex Brands, Inc.

COUPONS

Accidents, Death & Court

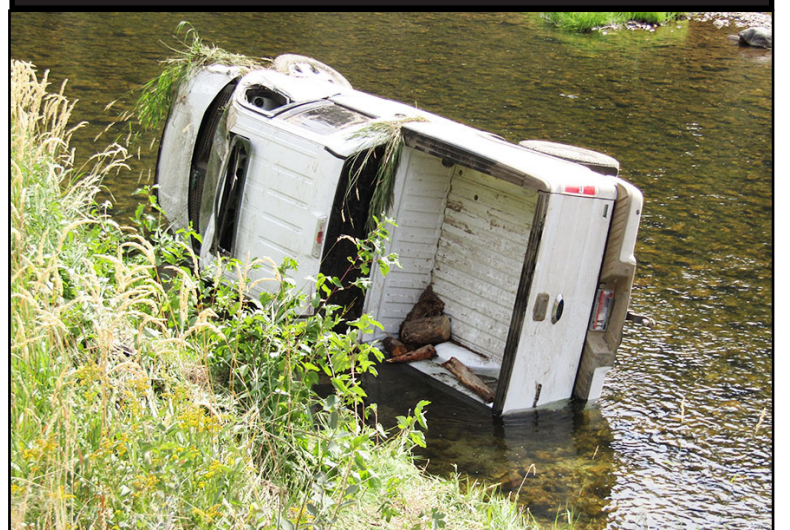


Photo by Eileen Capson

On Saturday, this **F150 Ford truck** left the pavement of Highway 21, road along the edge for about 100 feet, before losing too much ground, rolling down into Mores Creek near milemarker 29. The Boise County Sheriff's deputy on the scene was very impressed that the occupant was for the most part uninjured, with only a bump on his leg and cut on the finger. However, the man did admit to drinking and driving.

There had been a truckload of firewood in the bed which was questionable, if it should be recovered or salvaged.

East Boise County Ambulance responded to help this man, while Wilderness Ranch Fire Protection District was on the scene to assist the man, in his mid- 30's, up the steep embankment on a stretcher. As a precaution, he was transported to a Boise hospital.

On Thursday evening, **William Navarro**, 48, had been rafting with his girlfriend on the N. Fork of the Payette River when he fell out while going through some rapids. The report said he was unable to get back in, because of the buckles on his life jacket and his large size. Navarro proceeded to remove his life jacket and threw it in the back of the raft. Unfortunately, at that time they came to another series of rapids, at about mile post 74 along Highway 55, and the girlfriend lost sight of him around a bend. She got the raft to shore and ran frantically along the water's edge trying to find him, but was unsuccessful. She flagged down a motorist for help. Navarro was recovered approximately 2 miles down stream, but at that point was unresponsive.

Richard Swalley, formally from Garden Valley, was brought in handcuffs to the Boise County courthouse on August 10th. He had been in jail after being charged with Lewd Conduct with a Child, under 16. He was up for a "Rider Review". His ex-wife testified that he had "done this to his own flesh and blood" and "1 year and 8 months was not enough." This case will be brought before the judge at a later date.

LEGAL NOTICES

ATTACHMENT A

NOTICE OF PUBLIC HEARING – BOISE COUNTY

A PUBLIC HEARING NOTICE IS HEREBY GIVEN THAT THE BOARD OF COMMISSIONERS OF BOISE COUNTY, IDAHO WILL MEET ON AUGUST 29TH, 2017, BETWEEN THE HOURS OF 2:00 AND 3:00 PM, IN THE MINER'S EXCHANGE BUILDING, 420 MAIN STREET, IDAHO CITY, IDAHO, FOR THE PURPOSE OF CONSIDERING AND FIXING A FINAL BUDGET AND MAKING APPROPRIATIONS TO EACH OFFICE, DEPARTMENT, SERVICE AGENCY OR INSTITUTION, AND FUND, FOR THE 2017-2018 FISCAL YEAR, AT WHICH TIME ANY TAXPAYER MAY APPEAR AND BE HEARD UPON ANY PART OR PARTS OF SAID BUDGET. THE FOLLOWING TABLE SETS FORTH THE AMOUNT APPROPRIATED TO EACH DEPARTMENT FOR THE 2017-2018 FISCAL YEAR, THE CURRENT YEAR BUDGET (2016-2017), TOGETHER WITH THE AMOUNTS EXPENDED DURING THE TWO PREVIOUS YEARS, FOR "SALARIES AND BENEFITS" AND "DETAIL OF OTHER EXPENSES", BY DEPARTMENT:

FUND #	Fund Name	ACTUAL EXPENDITURES						BUDGETED EXPENDITURES					
		FISCAL YEAR ENDING 9/30/2015*			FISCAL YEAR ENDING 9/30/2016*			FISCAL YEAR ENDING 09/30/2017			FISCAL YEAR ENDING 09/30/2018		
		Salaries and Benefits	Detail of Other Expenses	Total	Salaries and Benefits	Detail of Other Expenses	Total	Salaries and Benefits	Detail of Other Expenses	Total	Salaries and Benefits	Detail of Other Expenses	Total
	CURRENT EXPENSE FUND:												
01 01	CLERK/AUDITOR/RECORDER	282,994	6,669	289,663	277,647	3,993	281,640	311,395	10,300	321,695	316,936.45	10,000.00	326,936.45
01 02	ASSESSOR	220,522	13,300	233,822	227,912	11,287	239,199	256,443	12,700	269,143	238,715.48	12,200.00	250,915.48
01 03	TREASURER/TAX COLLECTOR	121,930	29,201	151,131	131,416	28,176	159,592	137,424	41,050	178,474	140,661.27	35,550.00	176,211.27
01 05	COMMISSIONERS	129,466	7,200	136,666	125,354	507	125,861	138,510	10,900	149,410	129,870.86	10,550.00	140,420.86
01 06	CORONER	20,771	18,146	38,917	29,852	12,648	42,500	33,261	27,975	61,236	34,204.36	31,100.00	65,304.36
01 10	ELECTIONS	21,427	20,538	41,965	25,819	32,584	58,403	38,835	36,887	75,722	41,345.84	43,124.00	84,469.84
01 11	EMERGENCY MANAGEMENT	46,562	24,407	70,969	44,971	38,474	83,445	45,544	38,483	84,027	64,104.34	20,690.00	84,794.34
01 12	GENERAL RESERVE ACCOUNT	-	-	-	-	-	-	-	77,678	77,678		118,866.00	118,866.00
01 14	DATA PROCESSING	-	266,374	266,374	-	188,868	188,868	-	251,282	251,282		226,350.00	226,350.00
01 17	COMMUNITY PROJECTS/CDH	-	18,900	18,900	-	21,600	21,600	-	24,000	24,000		24,000.00	24,000.00
01 18	GENERAL OPERATIONS	105,203	88,206	193,409	94,549	86,340	180,889	132,745	109,660	242,405	138,072.20	116,685.00	254,757.20
01 19	DISASTER DECLARATION	-	-	-	-	-	-	-	75,000	75,000		150,000.00	150,000.00
01 21	PLANNING & ZONING	123,639	66,286	189,925	153,049	34,432	187,481	166,710	45,543	212,253	222,996.52	44,943.00	267,939.52
01 22	TITLE III PROGRAMS	-	42,026	42,026	-	4,271	4,271	-	105,000	105,000		147,350.00	147,350.00
01 36	EXTRAORDINARY LEGAL EXPENSES	-	256,870	256,870	-	282,676	282,676	-	290,000	290,000		433,173.00	433,173.00
01 39	CAPITAL PROJECTS	-	955	955	-	20,824	20,824	-	52,057	52,057		176,000.00	176,000.00
	CURRENT EXPENSE FUND TOTAL	1,072,514	859,078	1,931,592	1,110,569	766,680	1,877,249	1,260,867	1,208,515	2,469,382	1,376,465.71	1,600,581.00	2,977,046.71
02 00	ROAD AND BRIDGE FUND	728,663	1,527,675	2,256,338	779,084	2,715,407	3,494,491	903,060	1,056,676	1,959,736	919,714.11	1,318,574.90	2,238,289.01
	JUSTICE FUND:												
03 01	SHERIFF	-	-	-	-	-	-	1,090,677	451,817	1,542,494	1,120,069.23	394,580.00	1,514,649.23
03 03	GENERAL OPERATIONS	-	-	-	-	-	-	-	60,360	60,360		61,000.00	61,000.00
03 04	PROSECUTING ATTORNEY	-	-	-	-	-	-	240,558	151,948	392,506	221,566.68	133,353.08	354,919.76
03 05	JUSTICE GENERAL RESERVE	-	-	-	-	-	-	-	118,459	118,459		123,468.00	123,468.00
03 07	DISPATCH	-	-	-	-	-	-	328,349	15,600	343,949	355,834.35	16,600.00	372,434.35
03 50	SHERIFF'S RESERVES	-	-	-	-	-	-	6,155	5,441	11,596	6,154.68	5,419.00	11,573.68
	JUSTICE FUND TOTAL	1,404,431	858,641	2,263,072	1,641,643	574,144	2,215,787	1,665,739	803,625	2,469,364	1,703,624.94	734,420.08	2,438,045.02
05 00	DISTRICT COURT FACILITIES FUND	-	519	519	-	7,324	7,324	-	75,000.00	75,000		80,000.00	80,000.00
	DISTRICT COURT FUND:												
06 50	DISTRICT COURT	-	-	-	-	-	-	147,178	55,110	202,288	154,966.45	50,185.00	205,151.45
06 52	JURY COMMISSION	-	-	-	-	-	-	44,593	23,800	68,393	31,060.66	24,300.00	55,360.66
06 54	COMMUNITY JUSTICE	-	-	-	-	-	-	129,412	51,255	180,667	158,919.72	27,821.00	186,740.72
	DISTRICT COURT FUND TOTAL	283,202	80,533	363,735	274,282	90,334	364,616	321,183	130,165	451,348	344,946.83	102,306.00	447,252.83
15 00	HEALTH PREVENTATIVE	-	34,814	34,814	-	35,108	35,108	-	37,000	37,000		36,975.00	36,975.00
16 00	INDIGENT FUND	22,664	95,657	118,321	21,866	59,307	81,173	11,601	183,300	194,901	12,030.31	245,200.00	257,230.31
17 00	JUNIOR COLLEGE FUND	-	20,470	20,470	-	31,420	31,420	-	34,586	34,586		29,479.00	29,479.00
20 00	REVALUATION FUND	244,000	8,968	252,968	232,378	11,260	243,638	292,103	15,500	307,603	292,993.68	15,500.00	308,493.68
23 00	SOLID WASTE FUND	166,131	488,398	654,529	175,217	462,160	637,377	222,118	513,436	735,554	230,285.41	626,265.00	856,550.41
24 00	TORT FUND	-	264,866	264,866	-	283,367	283,367	-	318,393	318,393		325,327.00	325,327.00
27 00	NOXIOUS WEEDS FUND	87,904	65,758	153,662	71,039	51,046	122,085	89,196	59,253	148,449	93,758.17	51,250.00	145,008.17
30 00	E911 FUND	12,119	133,309	145,428	-	110,176	110,176	-	133,764	133,764		163,162.09	163,162.09
37 00	SNOWMOBILE IC8A FUND	6,795	8,260	15,055	10,458	10,265	20,723	11,026	12,849	23,875	11,356.99	11,764.78	23,121.77
39 00	SNOWMOBILE GV8B FUND	2,247	3,492	5,739	3,065	12,623	15,688	5,513	48,167	53,680	5,678.49	5,514.00	11,192.49
54 00	SHERIFF'S VESSEL FUND	22,947	10,971	33,918	15,193	10,939	26,132	49,237	17,587	66,824	50,743.97	16,277.00	67,020.97
	Grand Total All Funds	4,053,617	4,460,890	8,514,507	4,334,794	5,231,560	9,566,354	4,831,643	4,647,816	9,479,459	5,041,598.61	5,362,595.85	10,404,194.46
		* Amounts obtained from audited financial reports for the fiscal years ended September 30, 2015 and September 30, 2016.											
25 00	63-1305A/BOND FUND	-	450,000	450,000	-	431,511	431,511	-	431,575	431,575		432,025.00	432,025.00

Published in the Idaho World on August 16, 2017.



**BOISE COUNTY
BOARD OF COMMISSIONERS
CONDENSED MINUTES
TUESDAY, AUGUST 1ST,
2017-Miners'
Exchange Building,
Idaho City, Idaho 83631**
Chairman Ward called the meeting to order and the pledge of allegiance was recited. Present: Chairman Ward, Commissioner Jackson, Commissioner Baker, Clerk Prisco, Deputy Clerk Coffelt, Prosecuting Attorney Blocksom, Assessor

Juszczak, Sheriff Kaczmarek, Emergency Management Coordinator Showalter, Community Justice Administrator Leader, Deputy Clerk Loya (Elections), Planning & Zoning Administrator Canody. The minutes for Tuesday, June 25th, 2017 were approved. A maintenance agreement for service to the HVAC equipment was approved. A bid from Barclay Const. for carpet and paint to the Miners' Exchange Building was approved. An IDG Award was accepted. Three demand warrants were approved. A discussion ensued concerning the tentative budget officer budget for fy2018. Two letters of interest for the P&Z Commission Board were reviewed and discussed. A certificate of residency was

approved. A liquor License was approved. Commissioner discussion & committee reports were briefly discussed. Future agendas topics were reviewed and discussed. Adjourned.

Approval, Chairman Ward. Attest, Clerk Prisco, Clerk to the Board.

Published in the Idaho World on August 16, 2017.

Laurinda Rice
Resident Agent Idaho City ERA West Wind
950 N Cole Rd
Boise, ID 83704
**Home Office: (208) 362-4835
ERA Office: (208) 377-2121**

E-mail: Laurinda@erawestwind.com
Website: www.erawestwind.com

Each ERA® Office is Independently Owned and Operated

**Best Building Lot
in Idaho**
Located in Downtown
Idaho City

Call Bill Stirling at
392-6023
Serious Inquiries Only

LEGAL NOTICES

ATTACHMENT B					
THE ESTIMATED REVENUE FOR BOISE COUNTY, IDAHO FOR THE FISCAL YEAR 2018 FROM OCTOBER 1, 2017 TO SEPTEMBER 30, 2018					
Fund Name	Tentative Budget	Transfer/ Cash Carryover	Revenue Other Than Taxes	Property Tax	Grand Total Revenue
CURRENT EXPENSE FUND	2,977,046.71	944,277.39	621,415.69	1,411,353.63	2,977,046.71
ROAD & BRIDGE FUND	2,238,289.01	524,700.38	1,543,717.71	169,870.92	2,238,289.01
JUSTICE FUND	2,438,045.02		722,764.37	1,715,280.65	2,438,045.02
DISTRICT COURT FACILITY FUND	80,000.00	80,000.00			80,000.00
DISTRICT COURT FUND	447,252.83	221,501.00	119,142.19	106,609.64	447,252.83
HEALTH PREVENTATIVE	36,975.00			36,975.00	36,975.00
INDIGENT FUND	257,230.31		85,000.00	172,230.31	257,230.31
JUNIOR COLLEGE FUND	29,479.00	479.00	29,000.00		29,479.00
REVALUATION FUND	308,493.68			308,493.68	308,493.68
SOLID WASTE FUND	856,550.41	132,550.41	724,000.00		856,550.41
TORT FUND	325,327.00			325,327.00	325,327.00
NOXIOUS WEEDS FUND	145,008.17		68,750.00	76,258.17	145,008.17
E911 FUND	163,162.09	41,211.00	121,951.09		163,162.09
SNOWMOBILE IC8A FUND	23,121.77	5,187.47	17,934.30		23,121.77
SNOWMOBILE GV8B FUND	11,192.49	3,442.49	7,750.00		11,192.49
SHERIFF'S VESSEL FUND	67,020.97	1,535.13	65,485.84		67,020.97
Grand Total All Funds	10,404,194.46	1,954,884.27	4,126,911.19	4,322,399.00	10,404,194.46
BOND FUND	432,025.00	432,025.00			432,025.00

Published in the Idaho World on August 16, 2017.

The Wilderness Ranch Fire Protection District will hold its Fiscal Year 2017-2018 Budget Hearing and Meeting on August 23, 2017 at 7:00 PM. The meeting will be conducted at the Wilderness Ranch Fire Station.

Wilderness Ranch Fire Protection District Fiscal Year 2017-2018 Proposed Annual Budget	
Income	
Cash Forward	\$ 25,000
Property Tax Levy	\$ 158,858
Total Income	\$ 183,858
Expense	
Major equipment	\$ 68,000
Electricity	\$ 4,147
EMS Supplies	\$ 3,148
Equipment Maintenance/Repair	\$ 4,450
Firefighter Training	\$ 10,550
Fire Prevention	\$ 800
Fuel	\$ 4,000
Insurance	\$ 3,611
Legal expense	\$ 500
Miscellaneous operating expense	\$ 6,000
Payroll Expense	\$ 39,143
Professional Acct/Audit	\$ 4,200
Professional Associations/Subs	\$ 2,350
Telephone	\$ 2,150
Vehicle Maintenance	\$ 27,854
WROA Monthly Dues	\$ 1,788
Utilities	\$ 500
Contingency	\$ 667
Total Expense	\$ 183,858

Published in the Idaho World on 8/16/2017.

**NOTICE OF PUBLIC HEARING ON PROPOSED FY 2017/2018 BUDGET
CITY OF IDAHO CITY, IDAHO**

A public hearing, pursuant to Idaho Code 50-1002, will be held for consideration of the proposed budget for the fiscal year from October 1, 2017 to September 30, 2018. The public hearing will be held at City Hall, 511 Main Street, Idaho City, ID during a Special Council Meeting on August 30, 2017, 6:00 PM. All interested persons are invited to appear and show cause, if any, why such budget should or should not be adopted. Copies of the proposed City budget in detail are available at City Hall during regular office hours (Monday - Thursday 8AM - 5 PM.) City Hall is accessible to persons with disabilities. Anyone desiring accommodations for disabilities related to the documents or to the hearing, please contact the city clerk, 392-4584 at least 48 hours prior to the meeting/public hearing. The proposed FY 2017/2018 budget is shown below as FY 2017/2018 proposed expenditures and revenues.

City of Idaho City Proposed 2017/2018 BUDGET					
	FY 2015/2016	FINAL 2015/2016	FY 2016/2017	FYTD 3rd Quarter 2016/2017	FY 2017/2018
REVENUE	BUDGETED	ACTUAL	AMEND BUDGETED	ACTUAL	PROPOSED
State of Idaho-Rev Share	16,946	17,844	18,364	19,149	18,943
Boise County-Rev Share/Sales Tax	8,890	9,417	9,719	5,099	10,093
State Liquor	18,000	18,398	14,364	14,658	14,568
Boise County-Property Taxes	100,162	95,621	124,764	67,260	99,214
Law Enforcement & Other Revenue	57,927	68,691	100,503	106,027	104,290
TOTAL General Fund	201,925	209,971	267,714	212,193	247,108
Steet Fund	65,329	53,142	90,238	72,138	69,257
Sewer Fund	240,931	151,416	187,721	127,683	189,753
Water Fund	319,292	287,284	298,202	206,329	298,552
Water Bond Fund	1,500,000		1,149,464	274,198	875,000
Parks & Rec. Fund	17,802	8,500	13,500	-	-
TOTAL Other Fund	2,143,354	500,342	1,739,125	680,348	1,432,562
GRAND TOTAL Revenue	2,345,279	710,313	2,006,839	892,541	1,679,670
EXPENSES					
Law Enforcement	92,095	106,770	148,056	100,555	115,668
Fire Department	27,000	23,489	27,001	20,993	-
General Administration	83,402	86,004	92,657	61,603	107,971
Contingency Fund					19,469
Total General Fund	202,497	216,263	267,714	183,151	243,108
Street Fund	65,329	41,239	90,238	53,829	69,257
Sewer Fund	240,931	162,842	187,721	143,779	189,753
Water Fund	319,292	182,776	298,202	144,596	298,552
Water Bond Fund	1,500,000		1,149,464	247,876	875,000
Parks & Rec. Fund	17,802		13,500	-	-
Total Other Fund Expenditures	2,143,354	386,857	1,739,125	590,080	1,432,562
Grand Total All Expenditures	2,345,851	603,120	2,006,839	773,231	1,675,670

The proposed expenditures and revenues for fiscal year 2017/2018 have been tentatively approved by the City Council. Publication dates for the notice of Public Hearing are August 16, 2017 and August 23, 2017 in the Idaho World.

Nancy L. Ling
City Clerk-Treasurer

Published in the Idaho World on 8/16 and 8/23/2017.

Terry Peterson - Boise County Resident
 terryp059@gmail.com
 cell: 208-608-4329
 www.BoiseCountyRE.com

"Integrity, Experience, Commitment"

**IDAHO PROPERTIES
REAL ESTATE**
 Serving Idaho Since 1957



"A total eclipse is a sight to behold, with the sun's corona stretching out in all directions like filaments of light, and the moon in the middle not completely black, but exhibiting an Earthly glow you can just make out. This is called Earthshine, the reflected light of Earth on the moon's dark side."
 "The sky all around turns into a deep, naval-blue twilight, while the horizon remains fringed with a lighter glow, as the sun is still shining outside the narrow path of totality, which typically is more or less 100 miles wide and wraps about halfway around the Earth."
 "Eclipses present a challenge for observers, as clouds can easily block the view. The goal for any chaser is to head to the area with the best prospects for clear skies." ~Ben Cooper, SPACE.com contributor

**SUMMARY OF
ORDINANCE NO. 2017-04**

AN ORDINANCE ADOPTING THE FISCAL YEAR 2018 BUDGET AND PROVIDING AN EFFECTIVE DATE

A summary of the principal provisions of Ordinance No. 2017-04 the City of Crouch, Boise County, Idaho, adopted on August 9th, 2017, is as follows:

Section 1: Adopts the budget as set forth in the table below.

	FY2018 Revenues Proposed
General Fund	\$76,145.00
Street Fund	\$9,378.00
Hall Fund	\$4,485.00
GVCA Fund	\$30,000.00
Museum Fund	\$8,200.00
City Water Fund	\$32,686.00
Garden Valley Visitor Ctr.	\$3,000.00
TOTAL REVENUES	\$163,894.00
	FY2018 Expenditures Proposed
General Fund	\$76,145.00
Street Fund	\$9,378.00
Hall Fund	\$4,485.00
GVCA Fund	\$30,000.00
Museum Fund	\$8,200.00
City Water Fund	\$32,686.00
Garden Valley Visitor Ctr.	\$3,000.00
TOTAL EXPENSES	\$163,894.00

Section 2: Provides for an effective date upon the passage, approval and publication of this ordinance.

The full text of this ordinance is available for review at the Crouch City Hall at 342 Village Circle and will be provided to any citizen upon request by contacting the City Clerk at 462-4687 or during normal office hours.

DATED as of the 9th day of August, 2017

CITY OF CROUCH
Boise County, Idaho

Robert Powell, Mayor

ATTEST:
Vickie Chandler, City Clerk

I, the undersigned City Attorney for and legal advisor to the City of Crouch, Idaho, hereby certify that I have read the foregoing Summary of Ordinance No. 2017-14 of the City of Crouch and that the same is true and complete and provides adequate notice to the public of the contents of said Ordinance.

DATED as of the 9th day of August, 2017.

By: Anthony Pantera, City Attorney

Published in the Idaho World on August 16, 2017.

BOISE COUNTY

Letters to the Editor

As usual I sent the Placerville Fire Departments L-2 Budget to the county and messed it up. I want to thank Alexandra Heckathorn for correcting it for me.

Job well done.

Dan Gasiorowski
Treasure Placerville Fire Protection District

Editor,

It is true that many times when a letter to the editor is written, the purpose is to complain about a problem, or perceived problem. This letter is the exception. I wish to thank City Councilman Martin for stopping by to give some clarification to the issues of my last letter, concerning Idaho City's water

supply. His explanations of the issues were concise and honest. Let me say that I do understand the problems. I get it that the tax base is small, and the costs of compliance can be high, and that the current Council may not have even been in office when the issues originated. I must applaud the efforts of the current Council to keep costs down while maintaining the best services, especially in the face of the passing of our Water Quality expert. In all fairness, I must relate that I checked the previously mentioned web site to compare the ratings for the area of New York I came from. Almost all districts were in worse shape than ours, so "WELL DONE".

The personal touch is well appreciated.

Peter Scarborough,
Idaho City

It seems as ITD has abandoned Highway 21. It is a disturbing trend that began this winter when Park and Ski areas were sporadically plowed. It has continued with the half finished job of striping the highway to Idaho City that was begun in June. There are numerous washouts from this Spring's water events that are to the edge of the asphalt. They have not been repaired and leave a dangerous condition when there is no shoulder past the fog line which is many places is the edge of the asphalt. And there has been no cleaning of the borrow pits that I have seen. Will ITD at least finish striping the highway? Please.

Barbara McClain
Idaho City

National Weather Service Prediction for the Eclipse

"It still a little early for an accurate forecast, though forecast models are starting to come in. Early indications are that the sky may not be completely clear...but the eclipse will still be spectacular even if the sky is only mostly sunny. Here are a couple of forecast links that you can monitor as we get close to the big event:

Idaho City: http://forecast.weather.gov/MapClick.php?x=239&y=144&site=boi&zmz=&zym=&map_x=239&map_y=144#.WZNSf1V96JA

Garden Valley: <http://forecast.weather.gov/MapClick.php?lon=-115.9438296297077&lat=44.09800377060762#.WZNSs1V96JA>

"We also have a cloud forecast on a specialized eclipse web page. Take a look at the forecast section of the eclipse web page and move the slider bar forward in time to show the forecast for Sky cover on Monday, August 21st. We will be updating this forecast each day as we get new information: <https://www.weather.gov/boi/eclipse>

"Personally, I am very excited about this once in a lifetime opportunity to see a total eclipse."

Jay Breidenbach,
Warning Coordination Meteorologist,
National Weather Service, Boise, ID

Grace Lutheran Church
 "Reflecting God's Love"

 405 Highway 55 Horseshoe Bend 208-398-4750
 Serving Christ in Boise, Gem and Ada Counties
 Sunday Fellowship at 11:30am
 Sunday Worship at 12:30pm
ALL ARE WELCOME

All Around Glass
 Auto and Residential
 Glass Replacement
 FREE mobile service,
 Call Shane at 392-4971

BOISE
 REAL ESTATE HUNTER.COM
Lonnie McDonough
 Licensed Real Estate Agent
 (208) 901-5741
 lonnie@boiserealestatehunter.com
 Affiliate of G2 Real Estate
Your Friend In The Real Estate Business

Syringa

CHIROPRACTIC & ACUPUNCTURE
Dr. James Jardine
 866-8962

Severance Sand & Gravel
 Garden Valley Lowman Horseshoe Bend
 462-3005
Readi-Mix Concrete
 Concrete Blocks, Septic Systems
 We Accept Visa and MC
 Delivery or U-haul
 License # RCE34099


CMH
 CASTLE MOUNTAIN HOMES, LLC
208-462-2882
 Locally Owned/Licensed Contractor
 Insurance Restorations * Remodeling
 New Construction * Carpet Cleaning
 Free Estimates

BONNA'S PLACE
 P.O. Box 510
 110 E. Granite St.
 Placerville, Idaho 83666
 (208) 392-9666
GROCERY

MILLER ENTERPRISES INC.
 208-793-2561
 Horseshoe Bend, Idaho
 Garbage Service to most of Boise County. We also have Construction & Demo Containers. Call for pricing. Locally Owned for 35 Years!
208-793-2561

John Ptak Construction, LLC
 342-6013
 Serving Boise County-
 Licensed and Insured
 All stages of construction
No job is too small.
No job too big.

JACK CRAIG POST 12
AMERICAN LEGION
PLACERVILLE, ID 83666
FREE
BOISE COUNTY Veterans Transportation
 . FREE TRANSPORTATION TO AND FROM APPOINTMENTS AT THE VA IN BOISE
 . PICK UP AT YOUR DOOR IF NECESSARY
 . YOU SCHEDULE THE TIME
 . NON-SMOKING VEHICLE
CALL FOR INFORMATION 208 392-9934



LEGAL NOTICES

Notice of Trustee's Sale Idaho Code 45-1506

Today's date: July 12, 2017 File No.: 7431.20842 Sale date and time (local time): November 15, 2017 at 2:00 PM Sale location: on the front steps of the Boise County Courthouse Annex, corner of Hwy 55 and Madison Street, Horseshoe Bend, ID 83629 Property address: 1039 Alder Creek Road Garden Valley, ID 83622 Successor Trustee: Northwest Trustee Services, Inc., an Idaho Corporation P.O. Box 997 Bellevue, WA 98009 (425) 586-1900 Deed of Trust information Original grantor: Kenneth L. Parks, a single person Original trustee: Pioneer Title Company Original beneficiary: Mortgage Electronic Registration Systems, Inc. as designated nominee for Movement Mortgage LLC, its successors and assigns Recording date: 09/09/2013 Recorder's instrument number: 241046 and Modified on 02/12/2015 and recorded on 05/04/2015 as Instrument No. 246851 and Modified n 06/03/2016 and recorded on 07/20/2016 as Instrument No. 251536 County: BOISE Sum owing on the obligation: as of July 12, 2017: \$359,328.89 Because of interest, late charges, and other charges that may vary from day to day, the amount due on the day you pay may be greater. Hence, if you pay the amount shown above, an adjustment may be necessary after we receive your check. For further information write or call the Successor Trustee at the address or telephone number provided above. Basis of default: failure to make payments when due. Please take notice that the Successor Trustee will sell at public auction to the highest bidder for certified funds or equivalent the property described above. The property address is identified to comply with IC 60-113 but is not warranted to be correct. The property's legal description is: Lot 22 in Block 1 of Creekside at Crosstimber Ranch Subdivision, according to the plat thereof, filed under Instrument No. 178921 recorded October 25, 2000 and as amended by the Affidavit recorded September 1, 2004 as Instrument No. 198161, records of Boise County, Idaho. The sale is subject to conditions, rules and procedures as described at the sale and which can be reviewed at www.northwesttrustee.com or USA-Foreclosure.com. The sale is made without representation, warranty or covenant of any kind. PARKS, KENNETH and TRAVIS (TS# 7431.20842) 1002.292093-File No.

Published in the Idaho World on 7/26, 8/2, 8/9 and 8/16/2017.

NOTICE TO CREDITORS (I.C. § 15-3-801)

Case No.: CV-2017-57 IN THE MATTER OF THE ESTATE OF: MARY A. MORRISON, Deceased. IN THE DISTRICT COURT OF THE FOURTH JUDICIAL DISTRICT OF THE STATE OF IDAHO, IN AND FOR THE COUNTY OF BOISE

NOTICE IS HEREBY GIVEN that the undersigned has been appointed personal representative of the above-named decedent. All persons having claims against the decedent or the estate are required to present their claims within four months after the date of the first publication of this Notice or said claims will be forever barred.

Claims must be presented to the undersigned at the address indicated, and filed with the Clerk of the Court. Judson B. Montgomery [ISB #4851]

Neal A. Koskella [ISB #9221] GIVENS PURSLEY LLP 601 West Bannock Street P.O. Box 2720 Boise, Idaho 83701-2720 Office: (208) 388-1200 Fax: (208) 388-1300 Attorneys for Personal Representative 13576047_2 [13524-2]

Published in the Idaho World on 8/16, 8/23 and 8/30/2017.

SUMMONS FOR PUBLICATION

Case No. CV 2017-40

IN THE DISTRICT COURT OF THE FOURTH JUDICIAL DISTRICT OF THE

STATE OF IDAHO, IN AND FOR THE COUNTY OF BOISE

EXTREME STAFFING OF IDAHO, LLC, dba EXTREME STAFFING AND PAYROLL, Plaintiff,

v.

SAFETY CORPORATION, INC. and JANE STONE, Defendants.

TO: SAFETY CORPORATION, INC. and JANE STONE:

You have been sued by EXTREME STAFFING OF IDAHO, LLC, dba EXTREME STAFFING AND PAYROLL, Plaintiff, in the District Court of the Fourth Judicial District, in and for the County of Boise, State of Idaho, in Case No. CV 2017-40.

The nature of the claim against you is an action to recover monetary damages resulting from an unpaid stated account owed Plaintiff.

Any time after 21 days following the last publication of this Summons, the Court may enter a judgment against you without further notice, unless prior to that time you have filed a written response in the proper form, including the Case No., and paid any required filing fee to the Clerk of the Court at 200 West Front St. Boise, ID 83702-7300, ID 83303-0126, (208) 287-6900, and served a copy of your response on the Plaintiff's attorney at John R. McDevitt, Skinner Fawcett LLP, 515 S. 6th St., P.O. Box 700, Boise, ID 83701-0700, (208) 345-2663.

A copy of the Summons and Complaint can be obtained by contacting either the Clerk of the Court or the attorney for Plaintiff. If you wish legal assistance, you should immediately retain an attorney to advise you in this matter.

JOHN R. MCDEVITT SKINNER FAWCETT LLP Attorneys at Law 515 South Sixth Street P.O. Box 700 Boise, ID 83701-0700 jmdevitt@skinnerfawcett.com Telephone: (208) 345-2663 Bar No. 8719

DATED this 18 day of July, 2017. Clerk of the Court Ashley Hileman

Published in the Idaho World on 7/26, 8/2, 8/9 and 8/16/2017.

ATTACHMENT A

NOTICE OF PUBLIC HEARING – EAST BOISE COUNTY AMBULANCE DISTRICT

A PUBLIC HEARING NOTICE IS HEREBY GIVEN THAT THE BOARD OF BOISE COUNTY COMMISSIONERS, CONVENING AS THE GOVERNING BOARD FOR EAST BOISE COUNTY AMBULANCE DISTRICT, WILL MEET ON AUGUST 29th, 2017, AT THE HOUR OF 3:30 PM IN THE MINER'S EXCHANGE BUILDING, 420 MAIN STREET, IDAHO CITY, IDAHO FOR THE PURPOSE OF CONSIDERING AND FIXING A FINAL BUDGET FOR THE EAST BOISE COUNTY AMBULANCE DISTRICT FOR THE 2017-2018 FISCAL YEAR AT WHICH TIME ANY TAXPAYER MAY APPEAR AND BE HEARD UPON ANY PART OR PARTS OF SAID BUDGET; AND THAT THE FOLLOWING TABLE SETS FORTH THE AMOUNT APPROPRIATED FOR THE 2017-2018 FISCAL YEAR, THE CURRENT YEAR BUDGET (2016-2017), TOGETHER WITH THE AMOUNTS EXPENDED FOR "SALARIES AND BENEFITS", AND "DETAIL OF OTHER EXPENSES" DURING THE TWO PREVIOUS YEARS, FISCAL YEARS 2014-2015 AND 2015-2016, BY THE EAST BOISE COUNTY AMBULANCE DISTRICT.

EAST BOISE COUNTY AMBULANCE - OPERATIONS ACTUAL EXPENDITURES

ACTUAL EXPENDITURES FISCAL YEAR ENDING 9/30/2015*			ACTUAL EXPENDITURES FISCAL YEAR ENDING 9/30/2016*		
Salaries and Benefits	Detail of Other Expenses	Total	Salaries and Benefits	Detail of Other Expenses	Total
27,879	60,692	88,571	114,443	65,252	179,695

* Amounts obtained from audited financial reports, for Boise County, for the fiscal years ended September 30, 2015, and September 30, 2016.

BUDGET

CURRENT BUDGET FISCAL YEAR ENDING 9/30/17			TENTATIVE BUDGET FISCAL YEAR ENDING 9/30/18		
Salaries and Benefits	Detail of Other Expenses	Total	Salaries and Benefits	Detail of Other Expenses	Total
123,976	351,551	475,527	112,868.07	176,246.00	289,114.07

TENTATIVE BUDGET - REVENUE FISCAL YEAR ENDING 9/30/2018

Tentative Budget	Transfers/ Cash Carryover	Revenue Other Than Taxes	Proposed Taxes	Grand Total Revenue
289,114.07	19,896.07	144,967.00	124,251.00	289,114.07

Published in the Idaho World on August 16, 2017.

Notice of Budget Hearing Garden Valley Fire Protection District

Notice is hereby given that the Garden Valley Fire Protection District Board of Commissioners will hold a Public Hearing for the proposed Fiscal Year beginning 1 October 2017 Budget. The hearing will be held on the 29th day of August at 7:00pm at the Garden Valley Fire Station, 373 Middle Fork Road, Garden Valley, Idaho. This hearing is pursuant to Idaho Code 31-1419A

Donald Mathews, Board Chairman

Summary of Budget:

REVENUES:	FY 2017	Proposed FY 2018
Property Tax	\$233,100	\$241,641
Fire Grants	206,000	50,000
Carry Over	140,000	160,000
Other Income	4,800	4,200
EMS Income	55,000	60,000
EMS Grants	15,000	25,000
EMS Donations	12,000	10,000
EMS Carry Over	55,000	55,000
EMS Other Income	5,000	6,500
TOTAL	\$725,900.00	\$612,341.00
EXPENDITURES:		
Personnel Services (Wages and Benefits, Payroll Taxes, EMT Vaccinations, Stress Tests, Vol. Air Med Memberships, Duty Incentives, Vol. Stipends, EMS Stipends, and Staff Training)	\$117,878	134,610
Travel	5,000	4,000
Tort Liability Fund	5,400	5,400
Fire Capital Investment	143,880	164,650
Operation and Maintenance	141,940	141,090
Fire Grants	206,000	50,000
Fire Unforeseen O&M	4,742	4,855
Fire Service Charge/Cost share	101	101
Property Tax Shortfall	23,059	24,164
EMS Capital Investment	60,445	56,171
EMS Grants	15,000	25,000
EMS Unforeseen O & M	2,355	2,200
EMS Service Charge	100	100
TOTAL	\$725,900.00	\$612,341.00

Published in the Idaho World on August 16, 2017.



AMERICAN Reserve Munitions
 125 Mill Rd. Horseshoe Bend
 Blow out sale on 9MM 115gr. Round Nose (New) - \$215 per 1,000 rnds, and 40SW 165gr. Flat Point (2nds) - \$210 per 1,000 rnds.
 Personal Defense * Training * And just having fun rounds
 Call 208.917.3045

Mountain Properties For Sale
 Lots from 1 - 40 Acres in Boise County
 Terms - 2% down and 1% per month.
 If you know of someone who may be interested, you would be entitled to a 5% Referral Fee once property is recorded in their name.
 For current list call: (208) 331-7929



CLASSIFIEDS

YARD SALE:

Huge Sale - Something for everyone! 880 Middlefork Rd, 8/4mi. North of Crouch. August 18, 19 & 20, from 9AM to 5PM. No Earlies Please!

FOR SALE:

RV 2002 Montana Mountain - 5th wheel, 37ft with 3 slides, \$16,900.

Call Henry at (208) 466-1879 or cell (208) 350-9488

2008 Sunset Creet 29 Ft. Travel Trailer.

Like new-very clean interior, sleeps 10, central a/c and furnace, awning, microwave, 4 burner stove, pantry. Road travel is less than 1300 miles in 8 yrs. Always stored in a covered unit. \$17,900.00.

Please call: 208-250-3457.

Moving: H.P. Personal Computer w/ 22inch screen, multi media w/ Epson Printer and furniture in Garden Valley.

Steve (208) 462-2108

Hard Rock Comp specialized 18-speed mountain bike.

In good shape. Enhanced aluminum. \$250, OBO Coleman 15ft canoe. Green. In good shape. \$350, OBO. Call 208-392-9584 after 6pm

NEW inversion table, assembled and ready to use. Cost me \$100.00...sell for \$75.00 FIRM. 462-3114.

Rooms for Rent in Idaho City:

Clean, furnished rooms with private bathrooms for rent in the heart of downtown. Rent starts at \$500 per month and includes electricity, water, sewer, DirectTV, Internet, and a Verizon cell phone booster. Kitchenette is shared by all the residents. Beautiful back yard and plenty of parking. Looking for quiet, considerate guests. References required. Absolutely no smoking or illegal drugs. Call (775) 223-4696 for more information.

HOUSE FOR RENT:

Garden Valley, 3 Bedroom Home, 2 bath & lovely location. \$900/ month. Don @ (208) 462-3777

WANTED:

Hardwood walnut-maple-cherry. Will also take scrap 462-3136

HELP WANTED:

Garden Valley School District 71; Paraprofessional Special Education / Title I

Special Education Paraprofessionals assist students with special needs under the direction of the Special Services Director. Paraprofessionals generally work in an inclusionary setting (i.e. least restrictive environment). Special Education Paraprofessionals help special needs students, and care for their physical, emotional health and safety, affirming their abilities, and striving to promote dignity in all relationships. Qualifications: High school diploma (or GED) AND 1) Two years of college (32 credit hours) OR 2) Associate's degree OR 3) Rigorous standard of quality on formal state or local assessment. Classified Application and Job Description available at www.gvsd.net. Submit application to lcallaway@gvsd.net or at Garden Valley School Administration Office. (7/12 & 7/18/2017)

The Basin School District is looking for an adult male to serve as a one on one aide for a middle school student.

The job is a classified, part time position with the possibility of full time. Wage is dependent on experience. Please pick up an application in the high school office or on the forms page of the district website. Basin 72 is an equal opportunity employer.

911 Dispatcher Position The Boise County Sheriff's Office has a position open for a "911 Dispatcher", in the Idaho City, ID office.

The position requires a minimum typing speed of 35 words per minute, High School Diploma or GED, and must be able to pass a pre-employment polygraph and background check.

- Receive, screen, and priorities emergency (911) and non-emergency calls for service.
- Operate a multi-frequency radio and computer-aided dispatch system.
- The ability to multi-task in a high paced environment.
- Work rotating shifts to include holidays, nights, and weekends.
- Must demonstrate a high level of professionalism and confidentiality.

Starting wage is \$12.24 per hour. Benefits to include health insurance and vacation accrual.

Applications available <http://www.boisecounty.us/Sheriff.aspx> - Forms to Download "Law Enforcement Application for Employment"

Position open until filled, any questions contact Vicky Dwight, Dispatch Supervisor at 208-392-4411

Civil Support Specialist: \$12.24/hr

BASIC FUNCTION:

Distributes subpoenas, writs of execution, restitution or attachment for service. Performs a variety of clerical and accounting functions designed to carry out proper maintenance of records of the office of the County Sheriff. Assist the Civil Support Administrator is completing the duties and responsibilities of the office.

QUALIFICATIONS: Knowledge of office practices and procedures; grammar, spelling and mathematics. Knowledge of law enforcement practices.

CERTIFICATION/ TRAINING: High School Diploma or Equivalency Apply at the Sheriff's Office.

Deputy Sheriff: \$35,000 - \$45,000/ year

BASIC FUNCTION: Performs a wide range of professional law enforcement duties intended to secure public safety and enforcement of laws within the bounds of Boise County.

QUALIFICATIONS: Working knowledge of all criminal, civil and traffic laws including investigation procedures. Working knowledge of modern law enforcement principles, procedures, techniques and equipment. Effective communication skills, both verbal and written. Ability to react effectively in emergency and stress situations; follow standard safety practices and procedures common to law enforcement work. Must be in good physical condition and able to work long hours. Ability to establish and maintain effective working relationships with fellow employees, other agencies, and the public.

Experience: An equivalent combination of experience, education and training that provides the required knowledge, skills and abilities. Apply at the Sheriff's Office.

Basin School District is looking to hire part time bus drivers. Class B CDL with passenger and school bus endorsement is required. Willing to train. Pay DOE. Inquire at Idaho City High School or call Russ at 284-7966.

Boise County Road & Bridge Department is currently accepting applications for a full time Equipment Operator position in the Idaho City area. Class A CDL required. Applications may be obtained from the Boise County website (www.boisecounty.us) or contact the Road Department Office at 793-2380 or the Boise County Clerk's Office at 420 Main Street, Idaho City, ID

83631. Applications accepted until position is filled. Pre-employment Drug testing is required. Boise County is an Equal Opportunity Employer and gives Veteran's Preference in its hiring practices.

VOLUNTEER:

The Horseshoe Bend School district is currently seeking a school board trustee to fill a vacancy in Zone 1. Zone 1 is roughly defined as north of Highway 52, west of highway 55 until Porter Creek, and then north from there. If you are interested in serving but live outside of Zone 1 the school board is able to appoint someone from outside the zone area after the September board meeting. If you are interested in serving, please contact Superintendent Chesnut at chesnutd@hsbschools.org.

City of Idaho City is accepting letters of intent for a vacant Historic Preservation Commission position.

Applicants should have a demonstrated interest, competence, or knowledge of historic preservation. Commissioners are asked to review applications for certificates of appropriateness for proposed changes on historic district properties. Applicants need not to reside in the city limits.

Written comments may be dropped off at City Hall during business hours of Mon-Thur 8am-5pm, sent to City Hall at Box 130, Idaho City, ID 83631 or emailed to idahocityclerk@qwestoffice.net. Thank you.

HSB HAPPENINGS:

HSB City Council meeting Wednesday August 16, 7:00 p.m.-City Hall-112 Ada Street,

Horseshoe Bend

Horseshoe Bend School Board meeting, Wednesday, August 16, 6:30 p.m.-HSB High School Library (The board currently has a vacancy for a Zone 1 Trustee. If you are interested in serving on the school board, please contact Superintendent Chesnut at chesnutd@hsbschools.org.

Youth Dynamics Idaho 6B Rafting Trip-Friday, August 18. HSB youth ages 12-18. Meet at HSB City Park at noon for lunch followed by Payette River rafting trip, return to park by 5:00 p.m. Must have signed release form (www.yd.org/adventures) \$ 5.00 covers all expenses.

Interested in serving the HSB schools & community? Join the Horseshoe Bend Parent Teacher Community (HSBPTC) Contact Tracy Koslosky for more information (208) 793-2834 or tracykos24@gmail.com

HSB School's K-12 first day of classes for the 2017-2018 school year, Wednesday, August 23.

The Boise County Board of Commissioners during open session on August 15th, 2017 made the decision to keep the County Offices open, but with limited coverage in each office. If you are wanting to do any business that day, we suggest you call first.

Sourdough Lodge

Restaurant,
Motel, Hot Tubs, Cabin,
Gasoline,
RV Park, Liquor Store

Hours:
Open 7 Days A Week

259-3326, Fax 259-3325
MP 84, Hwy. 21, Lowman

LOCAL BUSINESSES

- All Around Glass.....(208) 392-4971
- American Reserve Munitions.....(208) 917-3045
- Bill Stirling - IC Property.....(208) 392-6023
- Dave's Welding/Auto Repair.....(208) 392-4270
- Donna's Place in Placerville.....(208) 392-9666
- Castle Mt. Homes - Contractor.....(208) 462-2882
- Grace Lutheran Church in HSB.....(208) 398-4750
- High Ground Electric(208) 342-0519
- HSB Family Dental.....(208) 888-4286
- John Ptak Construction(208) 342-6013
- Lara Alexander - Real Estate.....(208) 869-4644
- Laurinda Rice - Real Estate.....(208) 362-4835
- Lonnice McDonough - Real Estate.....(208) 901-5741
- Medicare Benefits.....(208) 350-9933
- Miller Enterprises Trash pick up(208) 793-2561
- Mt. Properties for Sale.....(208) 331-7929
- Postal Annex(208) 384-0777
- Severance Sand & Gravel(208) 462-3005
- Sourdough Lodge(208) 259-3326
- Syringa Chiropractic/ Acupuncture....(208) 866-8962
- Terrace Lakes Resort(208) 462-3933
- Terry Peterson - Real Estate.....(208) 608-4329

BOISE COUNTY

Hot Springs & a Hunting Ranch Seek Approval for Business Plans

Written by Janet Juroch

BOISE COUNTY -- The most recent Planning and Zoning meeting was to review Conditional Use Permits for the Haven Hot Springs located in Lowman and the 3 Springs Hunting Ranch located in Horseshoe Bend. The meeting ran quite long with many questions asked by the Board of Commissioners who present. The Planning and Zoning Commissioners attending, were Dan Gasiorowski, Chairman representing Placerville, John Jauregui representing Garden Valley, Rosemary Ardinger representing Mores Creek and Edith Williams representing Horseshoe Bend. There is still a vacancy for the Idaho City commissioner position.

The findings were approved for The Edge Resort of Garden Valley and for the Eagle Haven Mountain Oasis in Lowman. These businesses were on the July 27 agenda. Their final approval allows them to continue with their plans based on the CUP permits.

Haven Hot Springs filed a CUP 2017-006 for allowing improvements to an already existing business. Raymond Chambers was applying asked for allowance for tent camping, a public greenhouse and additions of a bathhouse and pool house expansion. They wanted to use the greenhouse for occasional special events.

Many questions were asked by the commissioners about the noise and times since the application referred to a closing time of 2:00 am. Chambers assured that the noise will be monitored. Gasiorowski asked for modified closing hours of 10:00 pm. He also requested that they should look into installing a decibel meter for noise.

Gasiorowski also wanted firewise plants in the camping area, fire sirens and a fire evacuation plan. He asked about

ATV and UTV restrictions in the campground for safety reasons. With additional camp sites, there was discussion of the water supply. Williams felt that this was something that "Central District Health should manage, not the board." Gasiorowski suggested a backup generator as well.

The CUP met the required standard conditions of the Unified Land Ordinance and the board felt that they could approve the CUP, pending final approval at the next August 17 P&Z meeting. Some neighbors came and also wanted to give their "thumbs up" in approval of the business.

Next on the Agenda was the hearing for the 3 Springs Hunting Ranch LLC. Stuart and Raeleen Welton made a presentation of what the ranch would entail. The game preserve is 360 acres and would have 4 RV spaces. The land is fully fenced and signage is at the property lines.

Raeleen gave out the credentials of an avid hunter and sportsman her husband was and his credibility to operate such a hunting ranch. She explained that the land has been used for hunting grounds in the past and their business would be similar usage.

The Weltons explained the use to the board. There would be only 4 hunters at a time that have reserved their time. Birds, certified disease free by Fish and Game, will be transported to the site daily. There will be supervision and no traps allowed. Dogs must be managed and obedient by their owners. Williams asked about any dog policies. Welton explained that they will be putting the responsibility on the owners.

No lead shot will be allowed. The board felt that since hunters will be using a shotgun firearm, there is not a big concern for shooting distance. Jauregui agrees, "Shot does not go that

far." The board did ask the applicants to create a 50 yard buffer around the property. This would also include daily monitoring for the decibels around the whole property and turn that in regularly.

Applicants will maintain adequate insurance. They also are working with the local EMS and Bob Showalter of Boise County for safety plans. They are also closely working on a fire plan with Nathan Howell, who is the Fire Chief of Horseshoe Bend.

Several Horseshoe Bend residents were at the meeting to make oral comments to be on record. The common thread of concerns and disapproval of the property use were revealed to the board by these adjoining property owners.

Kathy Moffit was concerned about dust abatement on the road through Gardena and if there was an evacuation plan in place. Kurt Krosch was concerned about all the additional traffic and noise. He explained that the road leading up to the hunting preserve was not in good shape.

Patti Krosch was concerned for the safety of the adjoining properties sine their property surrounds a good part of the hunting ranch. The Krosch's also were concerned for the noise level and wanted it monitored and asked for a 100 yard buffer. They also were worried for their cattle and chickens, and saying that the hunting impacts their land.

In a rebuttal to the adjoining neighbors, the Welton's cited that the majority of the operation will be in the winter months, so not likely to be as dusty. All evacuation and EMS action plans will be in place before the business opens. Hunters will not be allowed to retrieve a bird if it goes beyond property lines.

The board asked the owners to create a 50 yard buffer. The dust abatement was a mute point in that it is the county that maintains the Brownlee Road so it is not up to the owners to take care of that. According to Idaho Code, it was stated by the board, that dust is not an issue to deal with for the site.

Williams and Jauregui both were concerned of private property stipulations made by the board regarding firearms use and lawful hunting on private property. They asked the attorney to look at Idaho Code regarding those regulations and



Applicants Stuart and Raeleen Welton, facing the P&Z board explain the plans for the 3 Springs Hunting Ranch in Horseshoe Bend. In the background is left to right, Edith Williams, Rosemary Ardinger and John Jauregui.

Photo by Janet Juroch

also if it is proper to regulate noise.

Motion was made to approve the CUP with conditions. The 50 yard buffer and noise measurements were a part of the conditions. The Boise County Comprehensive Plan is extremely favorable if private property rights. The board saw this application as not in conflict with adjoining neighbors

but instead enhances the economy.

The next regular Planning and Zoning meeting is scheduled for Thursday, August 17, 2017 at 6:30pm in the Ladies' Club building in Horseshoe Bend. Both CUP applications are pending approval after the findings and conditions are reviewed and presented at the meeting.

Legal Notice

SUMMONS FOR PUBLICATION ON COMPLAINT FOR JUDICIAL FORECLOSURE AND DECLARATORY RELIEF

Case No. CV-2017-0000081

IN THE DISTRICT COURT OF THE FOURTH JUDICIAL DISTRICT OF THE STATE OF IDAHO, IN AND FOR THE COUNTY OF BOISE

WELLS FARGO BANK, N.A.,

Plaintiff,

v.

MARTINA CLEMMENS; THE UNKNOWN HEIRS, ASSIGNS AND DEVEISEES OF CHESTER CLEMMENS; and DOES 1 THROUGH 20, INCLUSIVE, including all parties with an interest in and/or residing in real property commonly known as, 116 West Castle Creek Rd., Garden Valley, ID 83622, and legally described as: THE WEST 198.00 FEET OF SOUTH 1/2 NORTHWEST 1/4 NORTHWEST 1/4 NORTHWEST 1/4 OF SECTION 15 TOWNSHIP 9 NORTH, RANGE 4 EAST, BOISE MERIDIAN, BOISE COUNTY, IDAHO.

Defendants.

TO: **DEFENDANTS THE UNKNOWN HEIRS, ASSIGNS AND DEVEISEES OF CHESTER CLEMMENS and DOES 1 through 20**, inclusive, including all parties with an interest in and/or residing in real property commonly known as **116 West Castle Creek Rd, Garden Valley, ID 83622**:

You have been sued by WELLS FARGO BANK, N.A., the Plaintiff, in the District Court in and for the County of Boise, Idaho, Case No. CV-2017-0000081. The nature of the claim against you is an action for declaratory relief and judicial foreclosure of the real property currently known as **116 West Castle Creek Rd, Garden Valley, ID 83622** and legally described as

THE WEST 198.00 FEET OF SOUTH 1/2 NORTHWEST 1/4 NORTHWEST 1/4 NORTHWEST 1/4 OF SECTION 15 TOWNSHIP 9 NORTH, RANGE 4 EAST, BOISE MERIDIAN, BOISE COUNTY, IDAHO.

Any time after 20 days following the last publication of this summons, the court may enter a judgment against you without further notice, unless prior to that time you have filed a written response in the proper form, including the Case Number and paid any required filing fee to the Clerk of the Court at 419 Main St., P.O. Box BC, Idaho City, ID 83631, (208) 392-4431, and serve a copy of your response on the Plaintiff's attorney, Sydney K. Leavitt, at ALDRIDGE PITE, LLP, 13125 W. Persimmon Ln., Ste. 150, Boise, ID 83713.

A copy of the Summons and Complaint can be obtained by contacting either the Clerk of the Court or the attorney for Plaintiff. If you wish for legal assistance, you should immediately retain an attorney to advise you in this matter. Dated this 19 day of July, 2017. CLERK OF THE DISTRICT COURT

By: Ashley Hileman
DEPUTY

CASPER J. RANKIN (SBN 9107)
SYDNEY K. LEAVITT (SBN 8933)
ALDRIDGE PITE, LLP
13125 W PERSIMMON LN, STE 150
BOISE, ID 83713
Telephone: (208) 908-0709
Facsimile: (858) 412-2789
Email: sleavitt@aldridgepite.com

Attorneys for Plaintiff WELLS FARGO BANK, N.A.

Published in the Idaho World on 8/16, 8/23, 8/30 and 9/6/2017.



Osprey

Photo by E. Capson

BOISE COUNTY

IDAHO CUOMO TO HOST ANNUAL COMMUNITY UPDATE EVENT IN PLACERVILLE

BOISE COUNTY – August 14, 2017 –Idaho CuMo Mining Corporation (ICMC), the wholly-owned subsidiary of American CuMo Mining Corporation, will host the annual CuMo Project barbeque and public update on September 20, 2017 at 6:00 p.m. in Placerville, Idaho at Don Thorton Plaza. The event will feature comments from Phil Bandy, Executive Vice President of ICMC, a stationed presentation hosted by the subject matter experts and a barbeque to benefit a local non-profit partner.

“The annual barbeque is the best opportunity to catch up on developments with

the CuMo Project,” stated Noelle Laury, Vice President of Public Relations and Corporate Communication at Idaho CuMo Mining Corporation. “This year we are using a stationed presentation to facilitate more small-group discussions and address as many questions as possible.”

Stationed presentations will include: Mapping and Exploration, Environment and Permitting, Communication and Engagement, and Geology. Attendees will have the opportunity to learn more about each of these areas from Idaho CuMo team members.

Dinner will be served at 6:30 p.m. Donations will be accepted

for a local non-profit.

“Idaho CuMo is partnering with a local non-profit to prepare and serve the meal at the event,” said Laury. “Donations will be accepted for the non-profit partner and CuMo will match funds donated.”

More details about event will be provided in the coming weeks including details on the non-profit partner. For more information, please contact Noelle Laury at nlaury@idahocumo.com or like the CuMo Project Facebook page. Additionally, community members can join the CuMo Project digital communication distribution list at cumoproject.com.

A Pre-Eclipse Concert Before the Path of Totality Descends on TERRACE LAKES

Written by Janet Juroch

GARDEN VALLEY -- Terrace Lakes Resort is gearing up for Pre-Eclipse Concert The concert will be on Sunday, August 20th from 12 PM - 9 PM. The outdoor concert is FREE and hosted by Dusty Leigh & The Claim Jumpers. There will be food vendors or take a stroll into their restaurant.

They have reserved camping spots on their fabulous greens set aside for solar eclipse viewers. Camping is not full yet. People can come for the eclipse event while making a full weekend with so many things to do in the Garden Valley area. Terrace Lakes has a geothermal pool, wine tasting room, hiking, tennis and golf. Garden Valley offers the outdoor Starlight Mountain Theatre, river floating and rafting close by, trail rides and shopping unique stores. For camping call 208-462-3250.

The day before Eclipse Day the concert will fill the afternoon with music featuring: Bobby Dee Keys, Dustin Isaac, Middlefork Revival, Dusty Leigh & The Claim Jumpers. Wade Huston, band member with his wife Dusty Leigh has his take on the music and musicians saying, “Bobby Dee Keys quite possibly could be the best improv honkytonk and rock pianist and keyboard player in the Treasure Valley, the guy is amazing! Dustin Isaac is the lead singer of the outlaw country band The Tumbleweeds. His band will be opening later this summer for the Eli Young Band in Boise at the Boise Knitting Factory. Dustin will be making his solo debut right here in Crouch Idaho. Middlefork Revival with Dan Baumgardner is a new local band that is quickly becoming a favorite in the Garden Valley area. They will be opening for

Andy Byron later this summer in Crouch.”

Dusty Leigh & The Claim Jumpers is the ultimate cover band and they come to Garden Valley quite often since they have roots in the area. The band has played shows from Washington DC, Virginia, North Carolina, Nevada, Idaho and Oregon. The Claim Jumpers are well received with their genuine high energy country and rock show. Reviewers allege that “Dusty Leigh has some of the best vocals in Idaho.”

The day of the eclipse views from Terrace Lakes could be spectacular with grassy area and wide-open space. There are some chartered helicopters bringing in people to view the eclipse at Terrace Lakes. “They will be landing on the first fairway,” according to General Manager Sean Wardle.

"Duke Days Rodeo"



Photos by Cole Youren

GARDEN VALLEY -- Duke Days Rodeo was started with a family challenge and a few beers on a warm sunny day in Garden Valley, Idaho. Since then, it has grown to include contestants from all over the state, with thousands of dollars added, during one night of Wild West celebration.

With events featured from John Wayne's classic western McClintock, “Duke Days Rodeo” is unlike any rodeo in the world! Our cowboys and cowgirls battle it out in events such as the classic wild cow milking and stock saddle bronc,

to the original horse pull and mounted egg race. But the highlight of the night is the Bath House Brawl, a long distance horse race over hills, creeks, and bogs.

While Duke Days isn't geared towards the family, it is a great occasion to let loose and enjoy what the west was meant to be-- wild, dangerous, and fun filled. Held on Saturday, August 19th, at 6:00PM at the Youren Arena in Garden Valley, Idaho. Located just across the bridge in Crouch, and then turn left at the park.

GVCA August Show



Anne Petersen and Randy Van Dyk are displaying their artistic creations at the Garden Valley Center for the Arts August show. Though they use acrylic, their art is very different in what appears on canvas. From birds to abstract, the art is appealing and colorful. The artist say they enjoy showing their work together. Petersen commented, "We do a lot of shows together because we like to demonstrate how we both use the acrylic in very different ways." Photo by Janet Juroch

Subscribe Now & Save!

Yearly Rates For Delivery To:

Boise County:	\$30.00
Treasure Valley:	\$45.00
(Zip Codes 837XX, 836XX (outside Boise County), and 979XX)	
Other U.S.A.:	\$50.00

YES! Enter My Subscription to **THE IDAHO WORLD**

My Check Is Enclosed. Gift New Renewal

Name _____

Address _____

City _____

State _____

Zip _____

THE IDAHO WORLD

P O Box 220, Idaho City, ID 83631

Professional Work * Sensible Rates

High Ground Electric & Construction, Inc.

Full Service Electrical Contractors

- *Generators
- *Remodels
- *Service Upgrades
- *Free Estimates

23 1/2 hour service

Licensed* Bonded* Insured

208-344-0605 * 208-342-0519

GARDEN VALLEY HOMES & LAND

Office - 208.462.6102 Cell - 208.869.4644

Lara Alexander
Real Estate Professional

lalexandersellshomes@gmail.com
1068 Old Crouch Rd.
Garden Valley, Idaho 83622

www.GardenValleyHomesandLand.com